



# SZABO SCANDIC

Part of Europa Biosite

## Produktinformation



Forschungsprodukte & Biochemikalien



Zellkultur & Verbrauchsmaterial



Diagnostik & molekulare Diagnostik



Laborgeräte & Service

Weitere Information auf den folgenden Seiten!  
See the following pages for more information!



### Lieferung & Zahlungsart

siehe unsere [Liefer- und Versandbedingungen](#)

### Zuschläge

- Mindermengenzuschlag
- Trockeneiszuschlag
- Gefahrgutzuschlag
- Expressversand

### SZABO-SCANDIC HandelsgmbH

Quellenstraße 110, A-1100 Wien

T. +43(0)1 489 3961-0

F. +43(0)1 489 3961-7

[mail@szabo-scandic.com](mailto:mail@szabo-scandic.com)

[www.szabo-scandic.com](http://www.szabo-scandic.com)

[linkedin.com/company/szaboscandic](https://www.linkedin.com/company/szaboscandic) 

## CCNB1 & PKMYT1 Protein Protein Interaction Antibody Pair

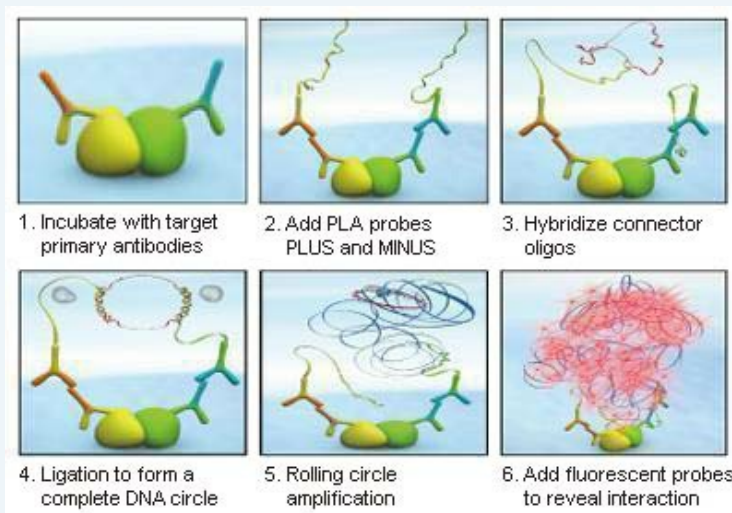
Catalog # : DI0004

規格 : [ 1 Set ]

List All

### Specification

**Product Description:** This protein protein interaction antibody pair set comes with two antibodies to detect the protein-protein interaction, one against the CCNB1 protein, and the other against the PKMYT1 protein for use in *in situ* Proximity Ligation Assay. See Publication Reference below.

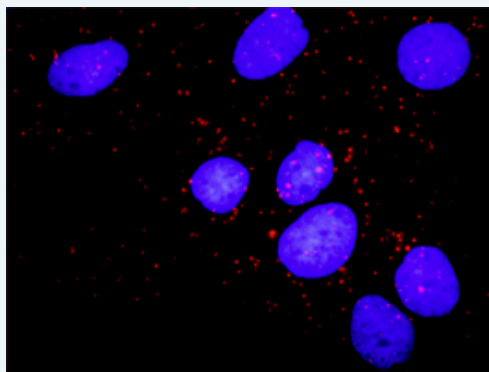


### Application Image

*In situ* Proximity Ligation Assay (Cell)

**Reactivity:** Human

**Quality Control Testing:** Protein protein interaction immunofluorescence result.



Representative image of Proximity Ligation Assay of protein-protein interactions between CCNB1 and PKMYT1. Huh7 cells were stained with anti-CCNB1 rabbit purified polyclonal antibody 1:1200 and anti-PKMYT1 mouse monoclonal antibody 1:50. Each red dot represents the detection of protein-protein interaction complex. The images were analyzed using an optimized freeware ([BlobFinder](#)) download from The Centre for Image Analysis at Uppsala University.

**Supplied Product:** Antibody pair set content:  
 1. CCNB1 rabbit purified polyclonal antibody (20 ug)  
 2. PKMYT1 mouse monoclonal antibody (40 ug)  
 \*Reagents are sufficient for at least 30-50 assays using recommended protocols.

**Storage Instruction:** Store reagents of the antibody pair set at -20°C or lower. Please aliquot to avoid repeated freeze thaw cycle. Reagents should be returned to -

20°C storage immediately after use.

MSDS:

 [Download](#)

---

### Publication Reference

---

1. [An analysis of protein-protein interactions in cross-talk pathways reveals CRKL as a novel prognostic marker in hepatocellular carcinoma.](#)  
Liu CH, Chen TC, Chau GY, Jan YH, Chen CH, Hsu CN, Lin KT, Juang YL, Lu PJ, Cheng HC, Chen MH, Chang CF, Ting YS, Kao CY, Hsiao M, Huang CY. Mol Cell Proteomics. 2013 Feb 8. [Epub ahead of print]

---

### Applications

---

#### *In situ* Proximity Ligation Assay (Cell)

---

[CCNB1](#) [PKMYT1](#)

---

### Gene Information

---

Entrez GeneID: [891](#)

Gene Name: CCNB1

Gene Alias: CCNB

Gene Description: cyclin B1

Omim ID: [123836](#)

Gene Ontology: [Hyperlink](#)

**Gene Summary:** The protein encoded by this gene is a regulatory protein involved in mitosis. The gene product complexes with p34(cdc2) to form the maturation-promoting factor (MPF). Two alternative transcripts have been found, a constitutively expressed transcript and a cell cycle-regulated transcript, that is expressed predominantly during G2/M phase. The different transcripts result from the use of alternate transcription initiation sites. [provided by RefSeq]

Other Designations: G2/mitotic-specific cyclin B1

---

### Gene Information

---

Entrez GeneID: [9088](#)

Gene Name: PKMYT1

Gene Alias: DKFZp547K1610,FLJ20093,MYT1

Gene Description: protein kinase, membrane associated tyrosine/threonine 1

Omim ID: [602474](#)

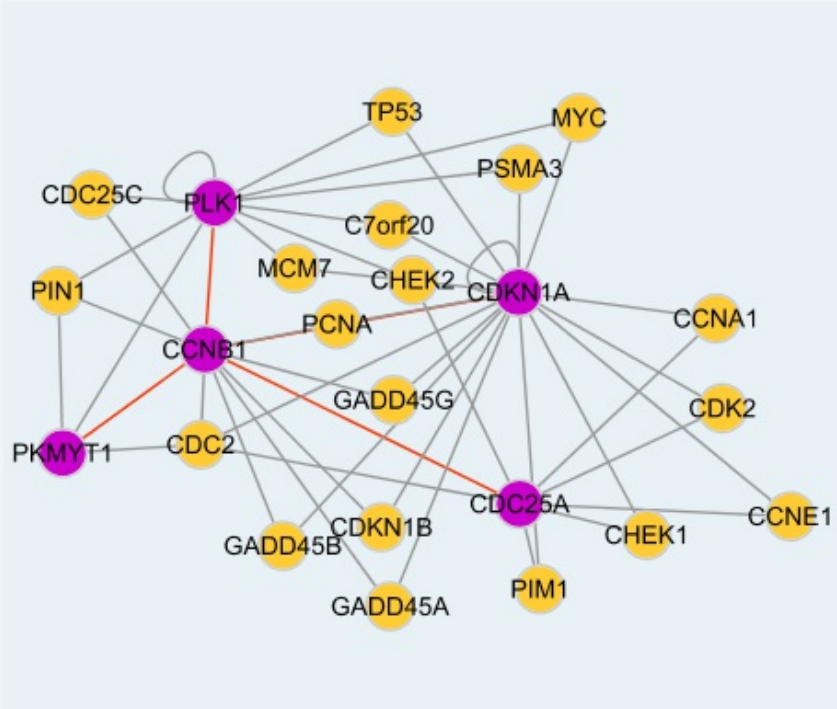
Gene Ontology: [Hyperlink](#)

**Gene Summary:** The protein encoded by this gene is a member of the serine/threonine protein kinase family. This kinase preferentially phosphorylates and inactivates cell division cycle 2 protein (CDC2), and thus negatively regulates cell cycle G2/M transition. This kinase is associated with the membrane throughout the cell cycle. Its activity is highly regulated during the cell cycle. Protein kinases AKT1/PKB and PLK (Polo-like kinase) have been shown to phosphorylate and regulate the activity of

this kinase. Alternatively spliced transcript variants encoding distinct isoforms have been reported. [provided by RefSeq]

**Other Designations:** membrane-associated tyrosine- and threonine-specific cdc2-inhibitory kinase,protein kinase Myt1

### Interactome 1



### Interactome 2

