



# SZABO SCANDIC

Part of Europa Biosite

## Produktinformation



Forschungsprodukte & Biochemikalien



Zellkultur & Verbrauchsmaterial



Diagnostik & molekulare Diagnostik



Laborgeräte & Service

Weitere Information auf den folgenden Seiten!  
See the following pages for more information!



### Lieferung & Zahlungsart

siehe unsere [Liefer- und Versandbedingungen](#)

### Zuschläge

- Mindermengenzuschlag
- Trockeneiszuschlag
- Gefahrgutzuschlag
- Expressversand

### SZABO-SCANDIC HandelsgmbH

Quellenstraße 110, A-1100 Wien

T. +43(0)1 489 3961-0

F. +43(0)1 489 3961-7

[mail@szabo-scandic.com](mailto:mail@szabo-scandic.com)

[www.szabo-scandic.com](http://www.szabo-scandic.com)

[linkedin.com/company/szaboscandic](https://www.linkedin.com/company/szaboscandic) 

## CDC6 & MCM7 Protein Protein Interaction Antibody Pair

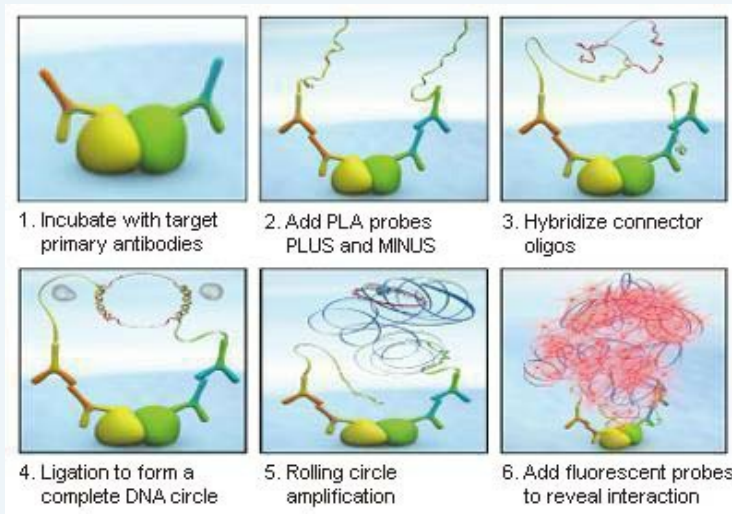
Catalog # : DI0019

規格 : [ 1 Set ]

List All

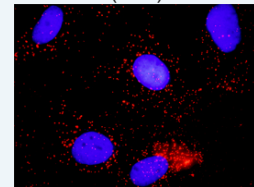
### Specification

**Product Description:** This protein protein interaction antibody pair set comes with two antibodies to detect the protein-protein interaction, one against the CDC6 protein, and the other against the MCM7 protein for use in *in situ* Proximity Ligation Assay. See Publication Reference below.



### Application Image

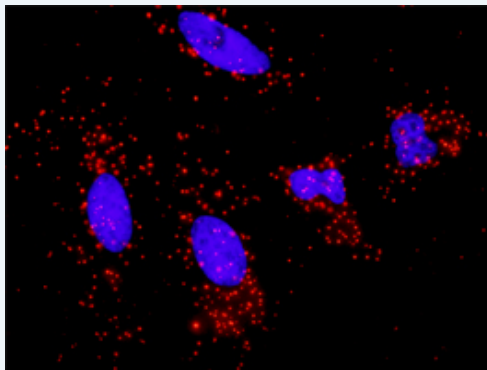
*In situ* Proximity Ligation Assay (Cell)



[enlarge](#)

**Reactivity:** Human

**Quality Control Testing:** Protein protein interaction immunofluorescence result.



Representative image of Proximity Ligation Assay of protein-protein interactions between CDC6 and MCM7. HeLa cells were stained with anti-CDC6 rabbit purified polyclonal antibody 1:1200 and anti-MCM7 mouse monoclonal antibody 1:50. Each red dot represents the detection of protein-protein interaction complex. The images were analyzed using an optimized freeware ([BlobFinder](#)) download from The Centre for Image Analysis at Uppsala University.

**Supplied Product:** Antibody pair set content:  
 1. CDC6 rabbit purified polyclonal antibody (20 ug)  
 2. MCM7 mouse monoclonal antibody (40 ug)  
 \*Reagents are sufficient for at least 30-50 assays using recommended protocols.

**Storage Instruction:** Store reagents of the antibody pair set at -20°C or lower. Please aliquot to avoid repeated freeze thaw cycle. Reagents should be returned to -

20°C storage immediately after use.

MSDS:

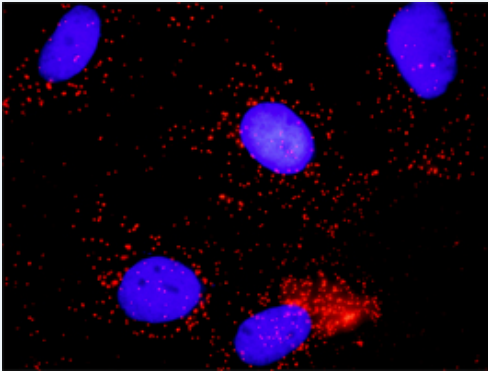
 [Download](#)

## Publication Reference

1. [An analysis of protein-protein interactions in cross-talk pathways reveals CRKL as a novel prognostic marker in hepatocellular carcinoma.](#)  
Liu CH, Chen TC, Chau GY, Jan YH, Chen CH, Hsu CN, Lin KT, Juang YL, Lu PJ, Cheng HC, Chen MH, Chang CF, Ting YS, Kao CY, Hsiao M, Huang CY. Mol Cell Proteomics. 2013 Feb 8. [Epub ahead of print]

## Applications

### *In situ* Proximity Ligation Assay (Cell)



Representative image of Proximity Ligation Assay of protein-protein interactions between CDC6 and MCM7. Huh7 cells were stained with anti-CDC6 rabbit purified polyclonal antibody 1:600 and anti-MCM7 mouse monoclonal antibody 1:100. Each red dot represents the detection of protein-protein interaction complex, and nuclei were counterstained with DAPI (blue).

[CDC6](#) [MCM7](#)

## Gene Information

Entrez GeneID: [990](#)

Gene Name: CDC6

Gene Alias: CDC18L,HsCDC18,HsCDC6

Gene Description: cell division cycle 6 homolog (S. cerevisiae)

Omim ID: [602627](#)

Gene Ontology: [Hyperlink](#)

**Gene Summary:** The protein encoded by this gene is highly similar to *Saccharomyces cerevisiae* Cdc6, a protein essential for the initiation of DNA replication. This protein functions as a regulator at the early steps of DNA replication. It localizes in cell nucleus during cell cycle G1, but translocates to the cytoplasm at the start of S phase. The subcellular translocation of this protein during cell cycle is regulated through its phosphorylation by Cdks. Transcription of this protein was reported to be regulated in response to mitogenic signals through transcriptional control mechanism involving E2F proteins. [provided by RefSeq]

**Other Designations:** CDC18 (cell division cycle 18, *S.pombe*, homolog)-like,CDC6 cell division cycle 6 homolog,CDC6-related protein,cell division cycle 6 protein

## Gene Information

Entrez GeneID: [4176](#)

Gene Name: MCM7

Gene Alias: CDABP0042,CDC47,MCM2,P1.1-MCM3,P1CDC47,P85MCM,PNAS-146

Gene Description: minichromosome maintenance complex component 7

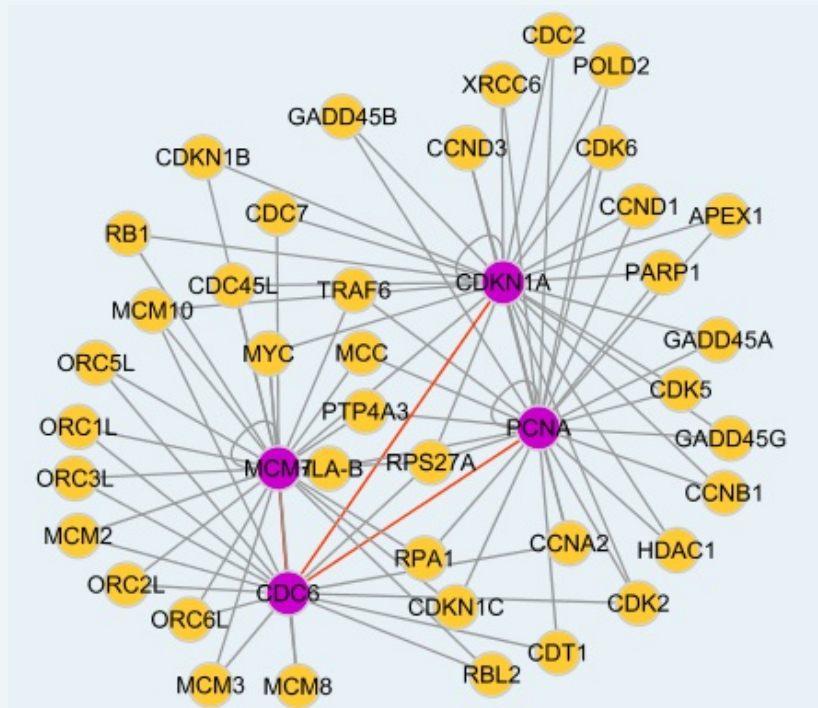
Omim ID: [600592](#)

Gene Ontology: [Hyperlink](#)

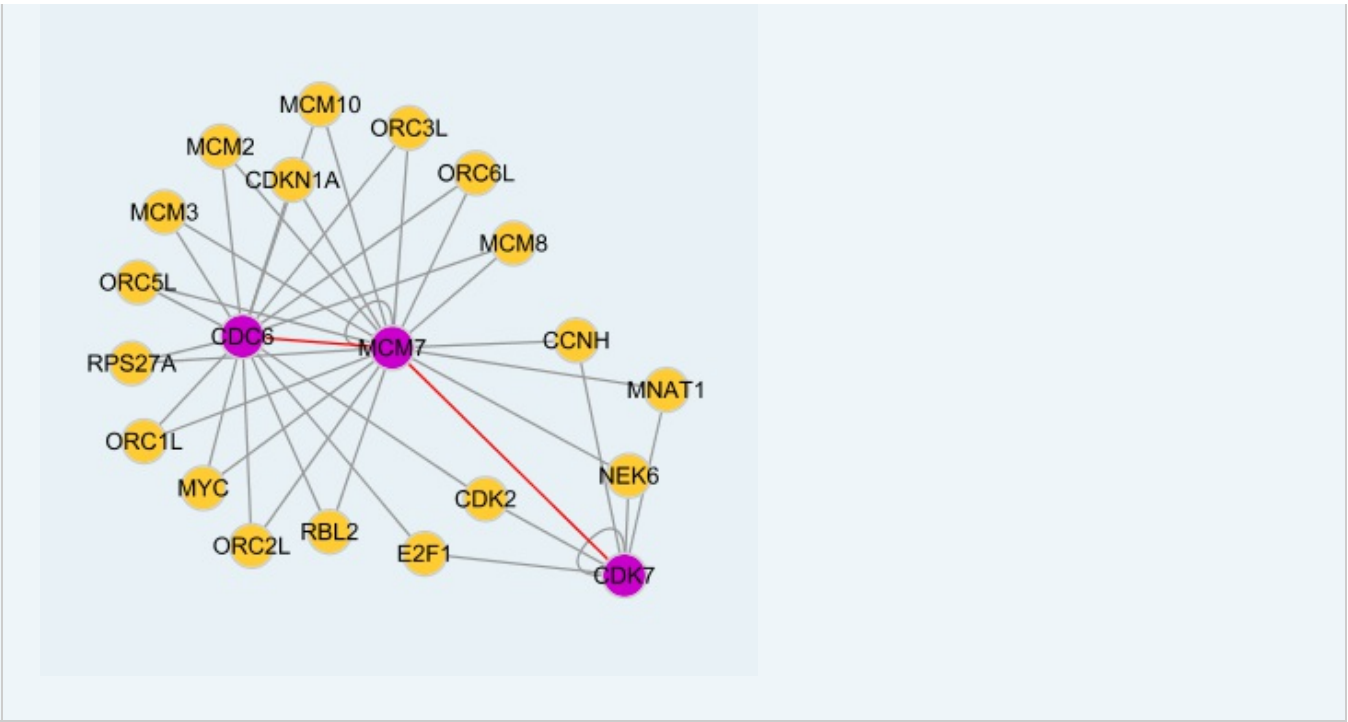
**Gene Summary:** The protein encoded by this gene is one of the highly conserved minichromosome maintenance proteins (MCM) that are essential for the initiation of eukaryotic genome replication. The hexameric protein complex formed by the MCM proteins is a key component of the pre-replication complex (pre\_RC) and may be involved in the formation of replication forks and in the recruitment of other DNA replication related proteins. The MCM complex consisting of this protein and MCM2, 4 and 6 proteins possesses DNA helicase activity, and may act as a DNA unwinding enzyme. Cyclin D1-dependent kinase, CDK4, is found to associate with this protein, and may regulate the binding of this protein with the tumorsuppressor protein RB1/RB. Alternatively spliced transcript variants encoding distinct isoforms have been reported. [provided by RefSeq]

**Other Designations:** DNA replication licensing factor MCM7,MCM7 minichromosome maintenance deficient 7,homolog of *S. cerevisiae* Cdc47,minichromosome maintenance deficient 7

#### Interactome 1



#### Interactome 2



[服務條款](#) | [隱私權政策](#) | [著作及商標](#) | [網站地圖](#)

©2016 亞諾法生技股份有限公司 Abnova Corporation. 版權所有.