



SZABO SCANDIC

Part of Europa Biosite

Produktinformation



Forschungsprodukte & Biochemikalien



Zellkultur & Verbrauchsmaterial



Diagnostik & molekulare Diagnostik



Laborgeräte & Service

Weitere Information auf den folgenden Seiten!
See the following pages for more information!



Lieferung & Zahlungsart

siehe unsere [Liefer- und Versandbedingungen](#)

Zuschläge

- Mindermengenzuschlag
- Trockeneiszuschlag
- Gefahrgutzuschlag
- Expressversand

SZABO-SCANDIC HandelsgmbH

Quellenstraße 110, A-1100 Wien

T. +43(0)1 489 3961-0

F. +43(0)1 489 3961-7

mail@szabo-scandic.com

www.szabo-scandic.com

[linkedin.com/company/szaboscandic](https://www.linkedin.com/company/szaboscandic) 

KLK3 & A2M Protein Protein Interaction Antibody Pair

Catalog # : DI0036

規格 : [1 Set]

List All

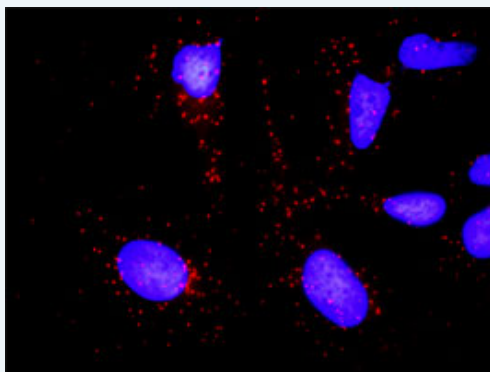
Specification

Product Description: This protein protein interaction antibody pair set comes with two antibodies to detect the protein-protein interaction, one against the KLK3 protein, and the other against the A2M protein for use in *in situ* Proximity Ligation Assay. See Publication Reference below.



Reactivity: Human

Quality Control Testing: Protein protein interaction immunofluorescence result.



Representative image of Proximity Ligation Assay of protein-protein interactions between KLK3 and A2M. HeLa cells were stained with anti-KLK3 rabbit purified polyclonal antibody 1:1200 and anti-A2M mouse monoclonal antibody 1:50. Each red dot represents the detection of protein-protein interaction complex. The images were analyzed using an optimized freeware ([BlobFinder](#)) download from The Centre for Image Analysis at Uppsala University.

Supplied Product: Antibody pair set content:
 1. KLK3 rabbit purified polyclonal antibody (20 ug)
 2. A2M mouse monoclonal antibody (40 ug)
 *Reagents are sufficient for at least 30-50 assays using recommended protocols.

Storage Instruction: Store reagents of the antibody pair set at -20°C or lower. Please aliquot to avoid repeated freeze thaw cycle. Reagents should be returned to -

Application Image

In situ Proximity Ligation Assay (Cell)

20°C storage immediately after use.

MSDS:  [Download](#)

Publication Reference

1. [An analysis of protein-protein interactions in cross-talk pathways reveals CRKL as a novel prognostic marker in hepatocellular carcinoma.](#)
Liu CH, Chen TC, Chau GY, Jan YH, Chen CH, Hsu CN, Lin KT, Juang YL, Lu PJ, Cheng HC, Chen MH, Chang CF, Ting YS, Kao CY, Hsiao M, Huang CY. Mol Cell Proteomics. 2013 Feb 8. [Epub ahead of print]

Applications

In situ Proximity Ligation Assay (Cell)

[A2M](#) [KLK3](#)

Gene Information

Entrez GeneID: [354](#)

Gene Name: KLK3

Gene Alias: APS,KLK2A1,PSA,hK3

Gene Description: kallikrein-related peptidase 3

Omim ID: [176820](#)

Gene Ontology: [Hyperlink](#)

Gene Summary: Kallikreins are a subgroup of serine proteases having diverse physiological functions. Growing evidence suggests that many kallikreins are implicated in carcinogenesis and some have potential as novel cancer and other disease biomarkers. This gene is one of the fifteen kallikrein subfamily members located in a cluster on chromosome 19. Its protein product is a protease present in seminal plasma. It is thought to function normally in the liquefaction of seminal coagulum, presumably by hydrolysis of the high molecular mass seminal vesicle protein. Serum level of this protein, called PSA in the clinical setting, is useful in the diagnosis and monitoring of prostatic carcinoma. Alternate splicing of this gene generates several transcript variants encoding different isoforms. [provided by RefSeq]

Other Designations: P-30 antigen,gamma-seminoprotein,kallikrein 3, (prostate specific antigen),prostate specific antigen,semenogelase,seminin

Gene Information

Entrez GeneID: [2](#)

Gene Name: A2M

Gene Alias: CPAMD5,DKFZp779B086,FWP007,S863-7

Gene Description: alpha-2-macroglobulin

Omim ID: [103950](#), [104300](#)

Gene Ontology: [Hyperlink](#)

Gene Summary: Alpha-2-macroglobulin is a protease inhibitor and cytokine transporter. It inhibits many proteases, including trypsin, thrombin and collagenase.

A2M is implicated in Alzheimer disease (AD) due to its ability to mediate the clearance and degradation of A-beta, the major component of beta-amyloid deposits. [provided by RefSeq]

Other Designations: -

Interactome 1



Interactome 2

