



SZABO SCANDIC

Part of Europa Biosite

Produktinformation



Forschungsprodukte & Biochemikalien



Zellkultur & Verbrauchsmaterial



Diagnostik & molekulare Diagnostik



Laborgeräte & Service

Weitere Information auf den folgenden Seiten!
See the following pages for more information!



Lieferung & Zahlungsart

siehe unsere [Liefer- und Versandbedingungen](#)

Zuschläge

- Mindermengenzuschlag
- Trockeneiszuschlag
- Gefahrgutzuschlag
- Expressversand

SZABO-SCANDIC HandelsgmbH

Quellenstraße 110, A-1100 Wien

T. +43(0)1 489 3961-0

F. +43(0)1 489 3961-7

mail@szabo-scandic.com

www.szabo-scandic.com

[linkedin.com/company/szaboscandic](https://www.linkedin.com/company/szaboscandic) 

TGFA & ADAM17 Protein Protein Interaction Antibody Pair

Catalog # : DI0043

規格 : [1 Set]

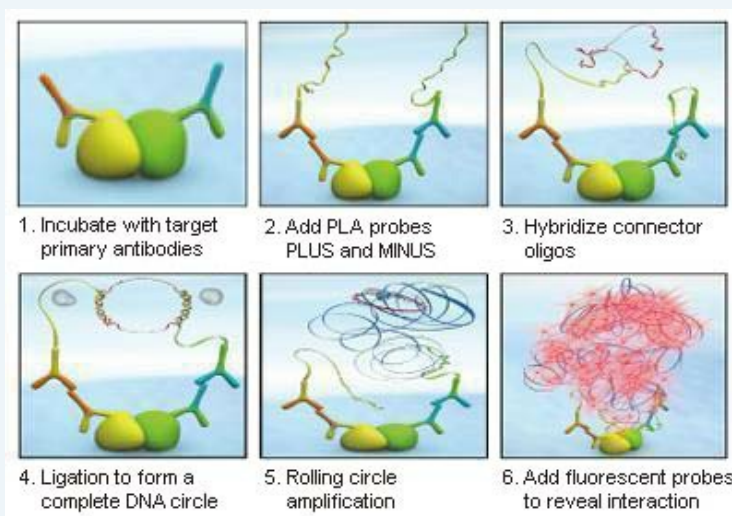
List All

Specification

Product Description: This protein protein interaction antibody pair set comes with two antibodies to detect the protein-protein interaction, one against the TGFA protein, and the other against the ADAM17 protein for use in *in situ* Proximity Ligation Assay. See Publication Reference below.

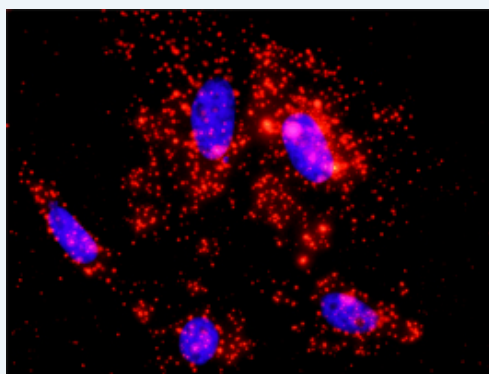
Application Image

In situ Proximity Ligation Assay (Cell)



Reactivity: Human

Quality Control Testing: Protein protein interaction immunofluorescence result.



Representative image of Proximity Ligation Assay of protein-protein interactions between TGFA and ADAM17. HeLa cells were stained with anti-TGFA rabbit purified polyclonal antibody 1:1200 and anti-ADAM17 mouse monoclonal antibody 1:50. Each red dot represents the detection of protein-protein interaction complex. The images were analyzed using an optimized freeware ([BlobFinder](#)) download from The Centre for Image Analysis at Uppsala University.

Supplied Product: Antibody pair set content:
 1. TGFA rabbit purified polyclonal antibody (20 ug)
 2. ADAM17 mouse monoclonal antibody (40 ug)
 *Reagents are sufficient for at least 30-50 assays using recommended protocols.

Storage Instruction: Store reagents of the antibody pair set at -20°C or lower. Please aliquot to avoid repeated freeze thaw cycle. Reagents should be returned to -

20°C storage immediately after use.

MSDS:

 [Download](#)

Publication Reference

1. [An analysis of protein-protein interactions in cross-talk pathways reveals CRKL as a novel prognostic marker in hepatocellular carcinoma.](#)
Liu CH, Chen TC, Chau GY, Jan YH, Chen CH, Hsu CN, Lin KT, Juang YL, Lu PJ, Cheng HC, Chen MH, Chang CF, Ting YS, Kao CY, Hsiao M, Huang CY. Mol Cell Proteomics. 2013 Feb 8. [Epub ahead of print]

Applications

In situ Proximity Ligation Assay (Cell)

[ADAM17](#) [TGFA](#)

Gene Information

Entrez GeneID: [7039](#)

Gene Name: TGFA

Gene Alias: TFGA

Gene Description: transforming growth factor, alpha

Omim ID: [190170](#)

Gene Ontology: [Hyperlink](#)

Gene Summary: Transforming growth factors (TGFs) are biologically active polypeptides that reversibly confer the transformed phenotype on cultured cells. TGF-alpha shows about 40% sequence homology with epidermal growth factor (EGF; MIM 131530) and competes with EGF for binding to the EGF receptor (MIM 131550), stimulating its phosphorylation and producing a mitogenic response.[supplied by OMIM]

Other Designations: transforming growth factor-alpha

Gene Information

Entrez GeneID: [6868](#)

Gene Name: ADAM17

Gene Alias: CD156b,MGC71942,TACE,cSVP

Gene Description: ADAM metallopeptidase domain 17

Omim ID: [603639](#)

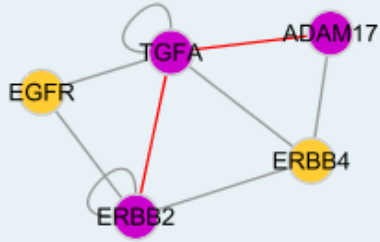
Gene Ontology: [Hyperlink](#)

Gene Summary: This gene encodes a member of the ADAM (a disintegrin and metalloprotease domain) family. Members of this family are membrane-anchored proteins structurally related to snake venom disintegrins, and have been implicated in a variety of biologic processes involving cell-cell and cell-matrix interactions, including fertilization, muscle development, and neurogenesis. The protein encoded by this gene functions as a tumor necrosis factor-alpha converting enzyme; binds mitotic arrest deficient 2 protein; and also plays a prominent role in the activation of

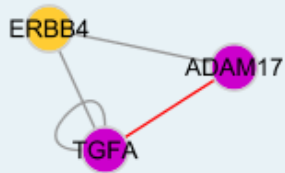
the Notch signaling pathway. [provided by RefSeq]

Other TNF-alpha converting enzyme,a disintegrin and metalloproteinase
Designations: domain 17 (tumor necrosis factor, alpha, converting enzyme),snake
venom-like protease,tumor necrosis factor, alpha, converting enzyme

Interactome 1



Interactome 2



[服務條款](#) | [隱私權政策](#) | [著作及商標](#) | [網站地圖](#)

©2016 亞諾法生技股份有限公司 Abnova Corporation. 版權所有.