



# SZABO SCANDIC

Part of Europa Biosite

## Produktinformation



Forschungsprodukte & Biochemikalien



Zellkultur & Verbrauchsmaterial



Diagnostik & molekulare Diagnostik



Laborgeräte & Service

Weitere Information auf den folgenden Seiten!  
See the following pages for more information!



### Lieferung & Zahlungsart

siehe unsere [Liefer- und Versandbedingungen](#)

### Zuschläge

- Mindermengenzuschlag
- Trockeneiszuschlag
- Gefahrgutzuschlag
- Expressversand

### SZABO-SCANDIC HandelsgmbH

Quellenstraße 110, A-1100 Wien

T. +43(0)1 489 3961-0

F. +43(0)1 489 3961-7

[mail@szabo-scandic.com](mailto:mail@szabo-scandic.com)

[www.szabo-scandic.com](http://www.szabo-scandic.com)

[linkedin.com/company/szaboscandic](https://www.linkedin.com/company/szaboscandic) 

## PDGFA & PLCG1 Protein Protein Interaction Antibody Pair

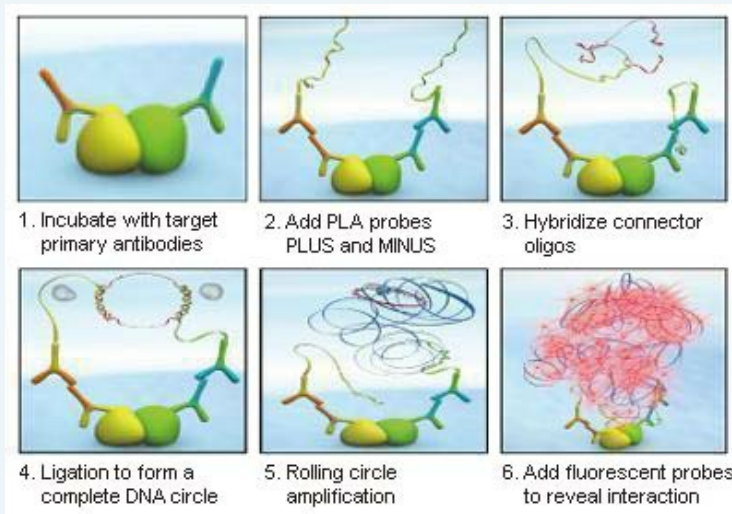
Catalog # : DI0045

規格 : [ 1 Set ]

List All

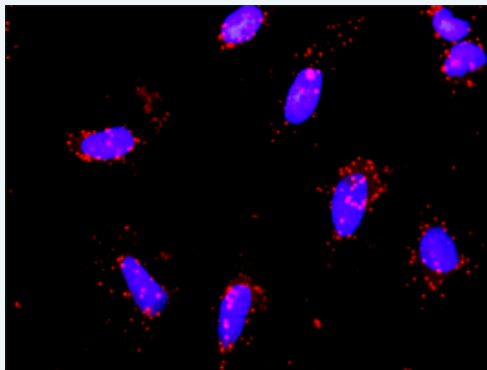
### Specification

**Product Description:** This protein protein interaction antibody pair set comes with two antibodies to detect the protein-protein interaction, one against the PDGFA protein, and the other against the PLCG1 protein for use in *in situ* Proximity Ligation Assay. See Publication Reference below.



**Reactivity:** Human

**Quality Control Testing:** Protein protein interaction immunofluorescence result.



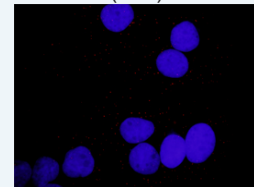
Representative image of Proximity Ligation Assay of protein-protein interactions between PDGFA and PLCG1. HeLa cells were stained with anti-PDGFA rabbit purified polyclonal antibody 1:1200 and anti-PLCG1 mouse monoclonal antibody 1:50. Each red dot represents the detection of protein-protein interaction complex. The images were analyzed using an optimized freeware ([BlobFinder](#)) download from The Centre for Image Analysis at Uppsala University.

**Supplied Product:** Antibody pair set content:  
 1. PDGFA rabbit purified polyclonal antibody (20 ug)  
 2. PLCG1 mouse monoclonal antibody (40 ug)  
 \*Reagents are sufficient for at least 30-50 assays using recommended protocols.

**Storage Instruction:** Store reagents of the antibody pair set at -20°C or lower. Please aliquot to avoid repeated freeze thaw cycle. Reagents should be returned to -

### Application Image


*In situ* Proximity Ligation Assay (Cell)



[enlarge](#)

20°C storage immediately after use.

MSDS:

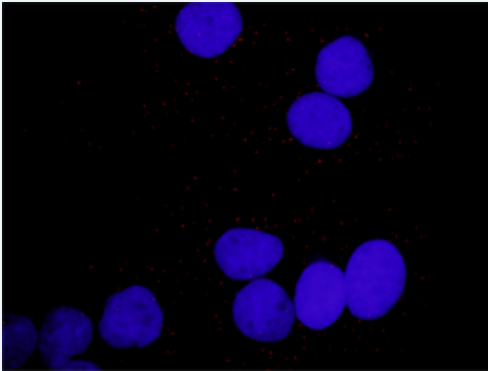
 [Download](#)

## Publication Reference

1. [An analysis of protein-protein interactions in cross-talk pathways reveals CRKL as a novel prognostic marker in hepatocellular carcinoma.](#)  
Liu CH, Chen TC, Chau GY, Jan YH, Chen CH, Hsu CN, Lin KT, Juang YL, Lu PJ, Cheng HC, Chen MH, Chang CF, Ting YS, Kao CY, Hsiao M, Huang CY. Mol Cell Proteomics. 2013 Feb 8. [Epub ahead of print]

## Applications

### *In situ* Proximity Ligation Assay (Cell)



Representative image of Proximity Ligation Assay of protein-protein interactions between PDGFA and PLCG1. Huh7 cells were stained with anti-PDGFA rabbit purified polyclonal antibody 1:1200 and anti-PLCG1 mouse monoclonal antibody 1:50. Each red dot represents the detection of protein-protein interaction complex, and nuclei were counterstained with DAPI (blue).

[PDGFA](#) [PLCG1](#)

## Gene Information

Entrez GeneID: [5154](#)

Gene Name: PDGFA

Gene Alias: PDGF-A,PDGF1

Gene Description: platelet-derived growth factor alpha polypeptide

Omim ID: [173430](#)

Gene Ontology: [Hyperlink](#)

**Gene Summary:** The protein encoded by this gene is a member of the platelet-derived growth factor family. The four members of this family are mitogenic factors for cells of mesenchymal origin and are characterized by a motif of eight cysteines. This gene product can exist either as a homodimer or as a heterodimer with the platelet-derived growth factor beta polypeptide, where the dimers are connected by disulfide bonds. Studies using knockout mice have shown cellular defects in oligodendrocytes, alveolar smooth muscle cells, and Leydig cells in the testis; knockout mice die either as embryos or shortly after birth. Two splice variants have been identified for this gene. [provided by RefSeq]

**Other Designations:** PDGF A-chain,platelet-derived growth factor alpha,platelet-derived growth factor alpha chain,platelet-derived growth factor alpha isoform 2 preproprotein

## Gene Information

Entrez GeneID: [5335](#)

Gene Name: PLCG1

Gene Alias: PLC-II,PLC1,PLC148,PLCgamma1

Gene Description: phospholipase C, gamma 1

Omim ID: [172420](#)

Gene Ontology: [Hyperlink](#)

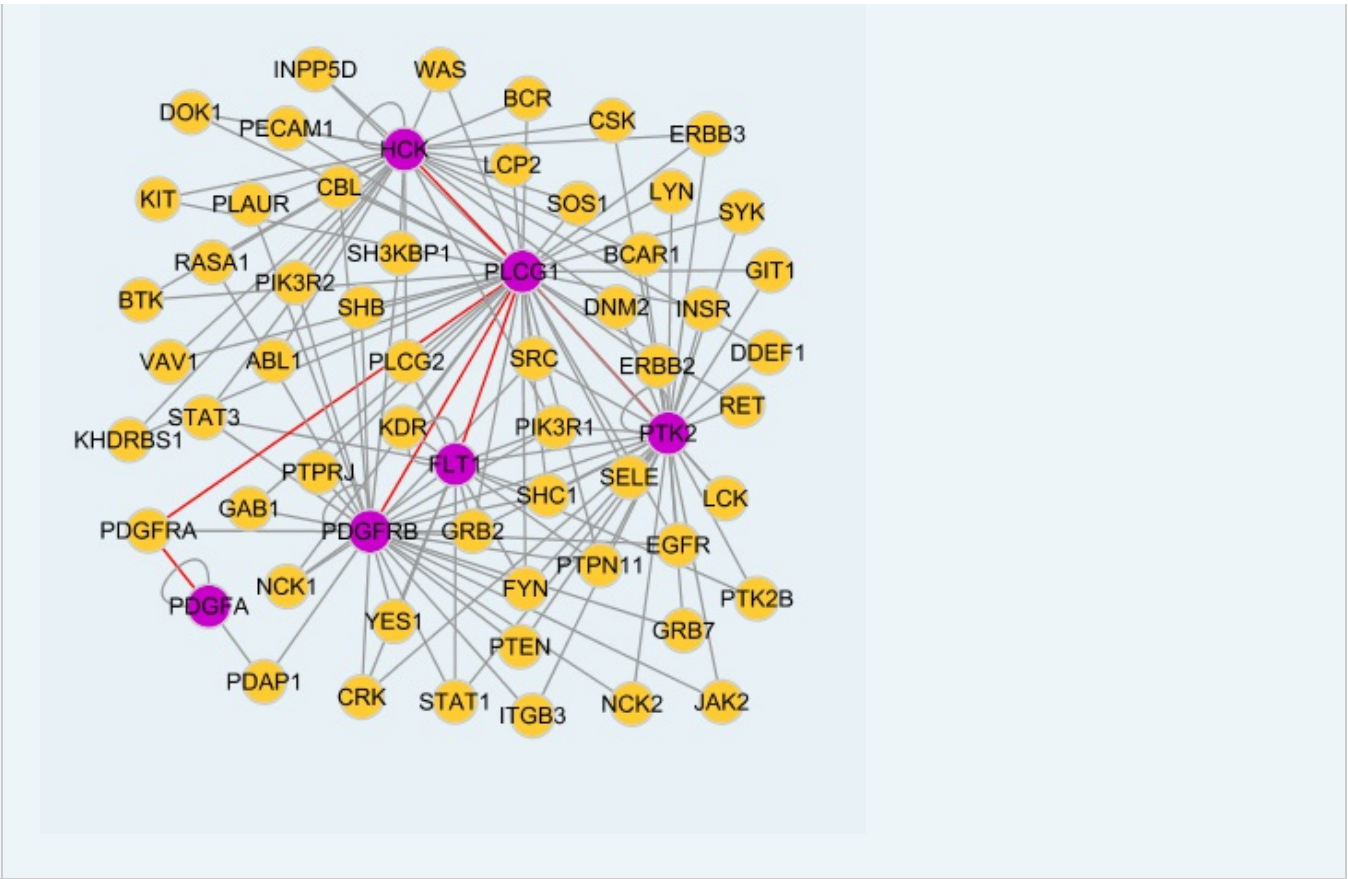
**Gene Summary:** The protein encoded by this gene catalyzes the formation of inositol 1,4,5-trisphosphate and diacylglycerol from phosphatidylinositol 4,5-bisphosphate. This reaction uses calcium as a cofactor and plays an important role in the intracellular transduction of receptor-mediated tyrosine kinase activators. For example, when activated by SRC, the encoded protein causes the Ras guanine nucleotide exchange factor RasGRP1 to translocate to the Golgi, where it activates Ras. Also, this protein has been shown to be a major substrate for heparin-binding growth factor 1 (acidic fibroblast growth factor)-activated tyrosine kinase. Two transcript variants encoding different isoforms have been found for this gene. [provided by RefSeq]

**Other Designations:** 1-phosphatidyl-D-myo-inositol-4,5-bisphosphate, 1-phosphatidylinositol-4,5-bisphosphate phosphodiesterase gamma  
1,OTTHUMP0000031787,OTTHUMP00000178982,PLC-gamma-1,inositoltrisphosphohydrolase,monophosphatidylinositol phosphodiesterase,phosphatidylinositol

#### Interactome 1



#### Interactome 2



[服務條款](#) | [隱私權政策](#) | [著作及商標](#) | [網站地圖](#)

©2016 亞諾法生技股份有限公司 Abnova Corporation. 版權所有.