



SZABO SCANDIC

Part of Europa Biosite

Produktinformation



Forschungsprodukte & Biochemikalien



Zellkultur & Verbrauchsmaterial



Diagnostik & molekulare Diagnostik



Laborgeräte & Service

Weitere Information auf den folgenden Seiten!
See the following pages for more information!



Lieferung & Zahlungsart

siehe unsere [Liefer- und Versandbedingungen](#)

Zuschläge

- Mindermengenzuschlag
- Trockeneiszuschlag
- Gefahrgutzuschlag
- Expressversand

SZABO-SCANDIC HandelsgmbH

Quellenstraße 110, A-1100 Wien

T. +43(0)1 489 3961-0

F. +43(0)1 489 3961-7

mail@szabo-scandic.com

www.szabo-scandic.com

[linkedin.com/company/szaboscandic](https://www.linkedin.com/company/szaboscandic)



PKM2 & ARAF Protein Protein Interaction Antibody Pair

Catalog # : DI0063

規格 : [1 Set]

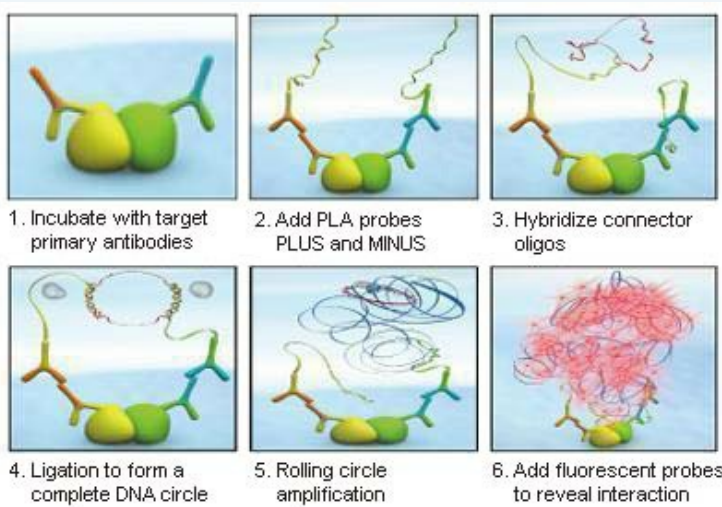
List All

Specification

Product Description: This protein protein interaction antibody pair set comes with two antibodies to detect the protein-protein interaction, one against the PKM2 protein, and the other against the ARAF protein for use in *in situ* Proximity Ligation Assay. See Publication Reference below.

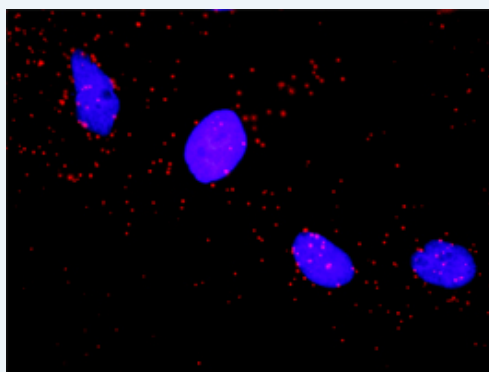
Application Image

In situ Proximity Ligation Assay (Cell)



Reactivity: Human

Quality Control Testing: Protein protein interaction immunofluorescence result.



Supplied Product: Antibody pair set content:
 1. PKM2 rabbit purified polyclonal antibody (20 ug)
 2. ARAF mouse monoclonal antibody (40 ug)
 *Reagents are sufficient for at least 30-50 assays using recommended protocols.

Storage Instruction: Store reagents of the antibody pair set at -20°C or lower. Please aliquot to avoid repeated freeze thaw cycle. Reagents should be returned to -

MSDS:[Download](#)**Publication Reference**

1. An analysis of protein-protein interactions in cross-talk pathways reveals CRKL as a novel prognostic marker in hepatocellular carcinoma. Liu CH, Chen TC, Chau GY, Jan YH, Chen CH, Hsu CN, Lin KT, Juang YL, Lu PJ, Cheng HC, Chen MH, Chang CF, Ting YS, Kao CY, Hsiao M, Huang CY. Mol Cell Proteomics. 2013 Feb 8. [Epub ahead of print]

Applications***In situ* Proximity Ligation Assay (Cell)**[ARAF](#) [PKM2](#)**Gene Information****Entrez GeneID:** [5315](#)**Gene Name:** PKM2**Gene Alias:** CTHBP,MGC3932,OIP3,PK3,PKM,TCB,THBP1**Gene Description:** pyruvate kinase, muscle**Omim ID:** [179050](#)**Gene Ontology:** [Hyperlink](#)

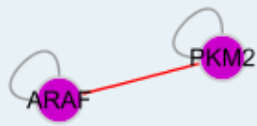
Gene Summary: This gene encodes a protein involved in glycolysis. The encoded protein is a pyruvate kinase that catalyzes the transfer of a phosphoryl group from phosphoenolpyruvate to ADP, generating ATP and pyruvate. This protein has been shown to interact with thyroid hormone and may mediate cellular metabolic effects induced by thyroid hormones. This protein has been found to bind Opa protein, a bacterial outer membrane protein involved in gonococcal adherence to and invasion of human cells, suggesting a role of this protein in bacterial pathogenesis. Three alternatively spliced transcript variants encoding two distinct isoforms have been reported. [provided by RefSeq]

Other Designations: OPA-interacting protein 3,PK, muscle type,pyruvate kinase M2,thyroid hormone-binding protein, cytosolic

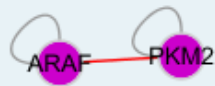
Gene Information**Entrez GeneID:** [369](#)**Gene Name:** ARAF**Gene Alias:** A-RAF,ARAF1,PKS2,RAFA1**Gene Description:** v-raf murine sarcoma 3611 viral oncogene homolog**Omim ID:** [311010](#)**Gene Ontology:** [Hyperlink](#)

Other Designations: OTTHUMP00000023212,Oncogene ARAF1,Ras-binding protein DA-Raf,v-raf murine sarcoma 3611 viral oncogene homolog 1

Interactome 1



Interactome 2



[服務條款](#) | [隱私權政策](#) | [著作及商標](#) | [網站地圖](#)

©2016 亞諾法生技股份有限公司 Abnova Corporation. 版權所有.