



SZABO SCANDIC

Part of Europa Biosite

Produktinformation



Forschungsprodukte & Biochemikalien



Zellkultur & Verbrauchsmaterial



Diagnostik & molekulare Diagnostik



Laborgeräte & Service

Weitere Information auf den folgenden Seiten!
See the following pages for more information!



Lieferung & Zahlungsart

siehe unsere [Liefer- und Versandbedingungen](#)

Zuschläge

- Mindermengenzuschlag
- Trockeneiszuschlag
- Gefahrgutzuschlag
- Expressversand

SZABO-SCANDIC HandelsgmbH

Quellenstraße 110, A-1100 Wien

T. +43(0)1 489 3961-0

F. +43(0)1 489 3961-7

mail@szabo-scandic.com

www.szabo-scandic.com

[linkedin.com/company/szaboscandic](https://www.linkedin.com/company/szaboscandic) 

MMP2 & BACE1 Protein Protein Interaction Antibody Pair

Catalog # : DI0067

規格 : [1 Set]

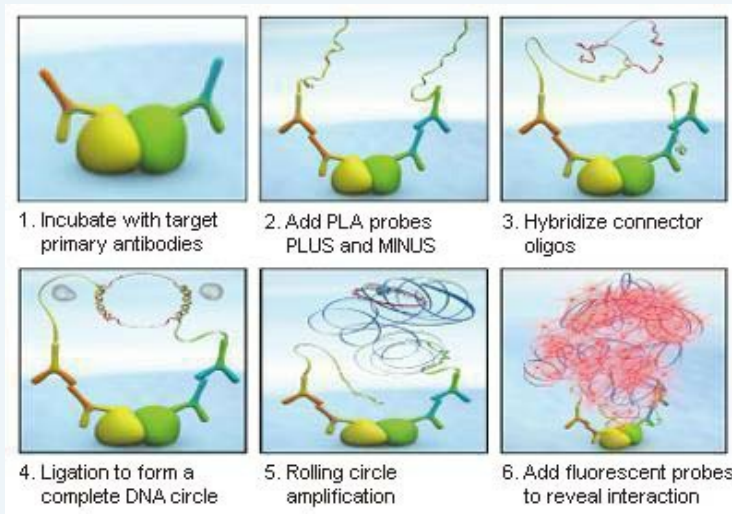
List All

Specification

Product Description: This protein protein interaction antibody pair set comes with two antibodies to detect the protein-protein interaction, one against the MMP2 protein, and the other against the BACE1 protein for use in *in situ* Proximity Ligation Assay. See Publication Reference below.

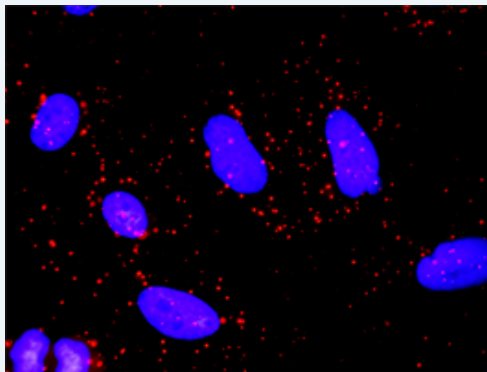
Application Image

In situ Proximity Ligation Assay (Cell)



Reactivity: Human

Quality Control Testing: Protein protein interaction immunofluorescence result.



Representative image of Proximity Ligation Assay of protein-protein interactions between MMP2 and BACE1. HeLa cells were stained with anti-MMP2 rabbit purified polyclonal antibody 1:1200 and anti-BACE1 mouse monoclonal antibody 1:50. Each red dot represents the detection of protein-protein interaction complex. The images were analyzed using an optimized freeware ([BlobFinder](#)) download from The Centre for Image Analysis at Uppsala University.

Supplied Product: Antibody pair set content:
 1. MMP2 rabbit purified polyclonal antibody (20 ug)
 2. BACE1 mouse monoclonal antibody (40 ug)
 *Reagents are sufficient for at least 30-50 assays using recommended protocols.

Storage Instruction: Store reagents of the antibody pair set at -20°C or lower. Please aliquot to avoid repeated freeze thaw cycle. Reagents should be returned to -

20°C storage immediately after use.

MSDS:  [Download](#)

Publication Reference

1. [An analysis of protein-protein interactions in cross-talk pathways reveals CRKL as a novel prognostic marker in hepatocellular carcinoma.](#)
Liu CH, Chen TC, Chau GY, Jan YH, Chen CH, Hsu CN, Lin KT, Juang YL, Lu PJ, Cheng HC, Chen MH, Chang CF, Ting YS, Kao CY, Hsiao M, Huang CY. Mol Cell Proteomics. 2013 Feb 8. [Epub ahead of print]

Applications

In situ Proximity Ligation Assay (Cell)

[MMP2](#) [BACE1](#)

Gene Information

Entrez GeneID: [4313](#)

Gene Name: MMP2

Gene Alias: CLG4,CLG4A,MMP-II,MONA,TBE-1

Gene Description: matrix metalloproteinase 2 (gelatinase A, 72kDa gelatinase, 72kDa type IV collagenase)

Omim ID: [120360](#), [277950](#), [605156](#)

Gene Ontology: [Hyperlink](#)

Gene Summary: Proteins of the matrix metalloproteinase (MMP) family are involved in the breakdown of extracellular matrix in normal physiological processes, such as embryonic development, reproduction, and tissue remodeling, as well as in disease processes, such as arthritis and metastasis. Most MMP's are secreted as inactive proproteins which are activated when cleaved by extracellular proteinases. This gene encodes an enzyme which degrades type IV collagen, the major structural component of basement membranes. The enzyme plays a role in endometrial menstrual breakdown, regulation of vascularization and the inflammatory response. Mutations in this gene have been associated with Winchester syndrome and Nodulosis-Arthropathy-Osteolysis (NAO) syndrome. Two transcript variants encoding different isoforms have been found for this gene. [provided by RefSeq]

Other Designations: collagenase type IV-A,matrix metalloproteinase 2,matrix metalloproteinase-II,neutrophil gelatinase

Gene Information

Entrez GeneID: [23621](#)

Gene Name: BACE1

Gene Alias: ASP2,BACE,FLJ90568,HSPC104,KIAA1149

Gene Description: beta-site APP-cleaving enzyme 1

Omim ID: [604252](#)

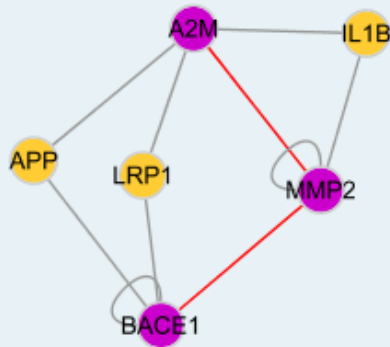
Gene Ontology: [Hyperlink](#)

Gene Summary: Cerebral deposition of amyloid beta peptide is an early and critical

feature of Alzheimer's disease. Amyloid beta peptide is generated by proteolytic cleavage of amyloid precursor protein (APP) by two proteases, one of which is the protein encoded by this gene. The encoded protein, a member of the peptidase A1 protein family, is a type I integral membrane glycoprotein and aspartic protease that is found mainly in the Golgi. Four transcript variants encoding different isoforms have been described for this gene. [provided by RefSeq]

Other Designations: APP beta-secretase,aspartyl protease 2,beta-secretase,beta-site amyloid beta A4 precursor protein-cleaving enzyme,beta-site amyloid precursor protein cleaving enzyme,memapsin-2,membrane-associated aspartic protease 2,transmembrane aspartic proteinase Asp2

Interactome 1



Interactome 2

