



SZABO SCANDIC

Part of Europa Biosite

Produktinformation



Forschungsprodukte & Biochemikalien



Zellkultur & Verbrauchsmaterial



Diagnostik & molekulare Diagnostik



Laborgeräte & Service

Weitere Information auf den folgenden Seiten!
See the following pages for more information!



Lieferung & Zahlungsart

siehe unsere [Liefer- und Versandbedingungen](#)

Zuschläge

- Mindermengenzuschlag
- Trockeneiszuschlag
- Gefahrgutzuschlag
- Expressversand

SZABO-SCANDIC HandelsgmbH

Quellenstraße 110, A-1100 Wien

T. +43(0)1 489 3961-0

F. +43(0)1 489 3961-7

mail@szabo-scandic.com

www.szabo-scandic.com

[linkedin.com/company/szaboscandic](https://www.linkedin.com/company/szaboscandic) 

BCL2L1 & BAX Protein Protein Interaction Antibody Pair

Catalog # : DI0068

規格 : [1 Set]

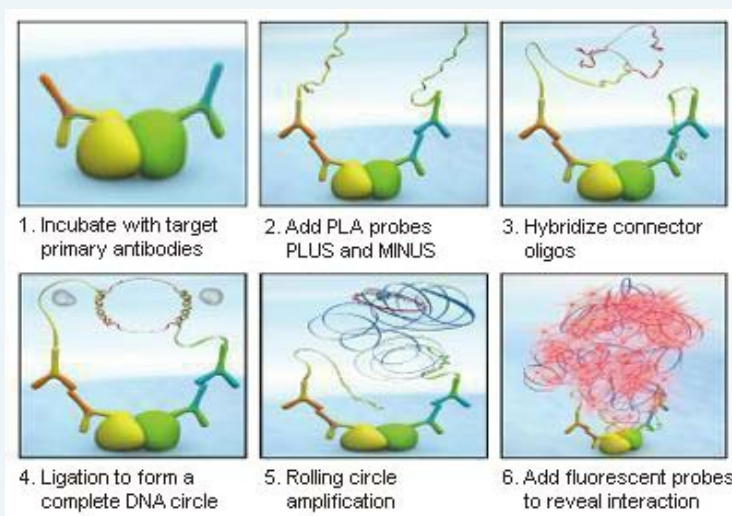
[List All](#)

Specification

Product Description: This protein protein interaction antibody pair set comes with two antibodies to detect the protein-protein interaction, one against the BCL2L1 protein, and the other against the BAX protein for use in *in situ* Proximity Ligation Assay. See Publication Reference below.

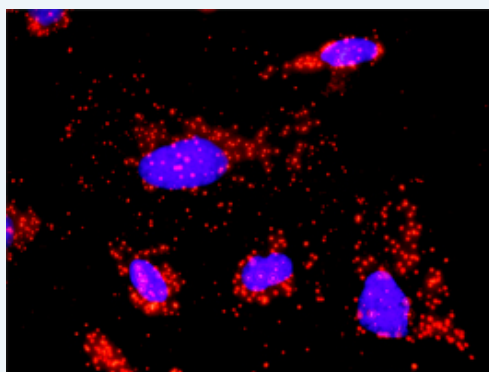
Application Image

In situ Proximity Ligation Assay (Cell)



Reactivity: Human

Quality Control Testing: Protein protein interaction immunofluorescence result.



Representative image of Proximity Ligation Assay of protein-protein interactions between BCL2L1 and BAX. HeLa cells were stained with anti-BCL2L1 rabbit purified polyclonal antibody 1:1200 and anti-BAX mouse monoclonal antibody 1:50. Each red dot represents the detection of protein-protein interaction complex. The images were analyzed using an optimized freeware ([BlobFinder](#)) download from The Centre for Image Analysis at Uppsala University.

Supplied Product: Antibody pair set content:
 1. BCL2L1 rabbit purified polyclonal antibody (20 ug)
 2. BAX mouse monoclonal antibody (40 ug)
 *Reagents are sufficient for at least 30-50 assays using recommended protocols.

Storage Instruction: Store reagents of the antibody pair set at -20°C or lower. Please aliquot to avoid repeated freeze thaw cycle. Reagents should be returned to -

MSDS:[Download](#)**Publication Reference**

1. An analysis of protein-protein interactions in cross-talk pathways reveals CRKL as a novel prognostic marker in hepatocellular carcinoma. Liu CH, Chen TC, Chau GY, Jan YH, Chen CH, Hsu CN, Lin KT, Juang YL, Lu PJ, Cheng HC, Chen MH, Chang CF, Ting YS, Kao CY, Hsiao M, Huang CY. Mol Cell Proteomics. 2013 Feb 8. [Epub ahead of print]

Applications***In situ* Proximity Ligation Assay (Cell)**[BAX](#) [BCL2L1](#)**Gene Information****Entrez GeneID:** [598](#)**Gene Name:** BCL2L1**Gene Alias:** BCL-XL/S,BCL2L,BCLX,Bcl-X,DKFZp781P2092,bcl-xL,bcl-xS**Gene Description:** BCL2-like 1**Omim ID:** [600039](#)**Gene Ontology:** [Hyperlink](#)

Gene Summary: The protein encoded by this gene belongs to the BCL-2 protein family. BCL-2 family members form hetero- or homodimers and act as anti- or pro-apoptotic regulators that are involved in a wide variety of cellular activities. The proteins encoded by this gene are located at the outer mitochondrial membrane, and have been shown to regulate outer mitochondrial membrane channel (VDAC) opening. VDAC regulates mitochondrial membrane potential, and thus controls the production of reactive oxygen species and release of cytochrome C by mitochondria, both of which are the potent inducers of cell apoptosis. Two alternatively spliced transcript variants, which encode distinct isoforms, have been reported. The longer isoform acts as an apoptotic inhibitor and the shorter form acts as an apoptotic activator. [provided by RefSeq]

Other Designations: OTTHUMP00000030550,OTTHUMP00000030551,OTTHUMP00000030553**Gene Information****Entrez GeneID:** [581](#)**Gene Name:** BAX**Gene Alias:** BCL2L4**Gene Description:** BCL2-associated X protein**Omim ID:** [600040](#)**Gene Ontology:** [Hyperlink](#)

Gene Summary: The protein encoded by this gene belongs to the BCL2 protein family. BCL2 family members form hetero- or homodimers and act as anti- or

Other apoptosis regulator BAX

Designations:

The diagram illustrates a protein-protein interaction network. The central nodes are BCL2L1 and BAX, both highlighted in purple. They are surrounded by 14 other proteins, each in a yellow circle: CRYAA, BNIPL, PMAIP1, BBC3, TP53, BID, BCLAF1, VDAC1, BCL2L10, MOAP1, BCL2, CRYAB, BAK1, and CRYAB. Numerous grey lines represent interactions between BCL2L1 and the surrounding proteins, and between BAX and the surrounding proteins. A single red line connects BCL2L1 and BAX, indicating a specific interaction between them.

[illegible]

