



SZABO SCANDIC

Part of Europa Biosite

Produktinformation



Forschungsprodukte & Biochemikalien



Zellkultur & Verbrauchsmaterial



Diagnostik & molekulare Diagnostik



Laborgeräte & Service

Weitere Information auf den folgenden Seiten!
See the following pages for more information!



Lieferung & Zahlungsart

siehe unsere [Liefer- und Versandbedingungen](#)

Zuschläge

- Mindermengenzuschlag
- Trockeneiszuschlag
- Gefahrgutzuschlag
- Expressversand

SZABO-SCANDIC HandelsgmbH

Quellenstraße 110, A-1100 Wien

T. +43(0)1 489 3961-0

F. +43(0)1 489 3961-7

mail@szabo-scandic.com

www.szabo-scandic.com

[linkedin.com/company/szaboscandic](https://www.linkedin.com/company/szaboscandic) 

NCK1 & BLNK Protein Protein Interaction Antibody Pair

Catalog # : DI0075

規格 : [1 Set]

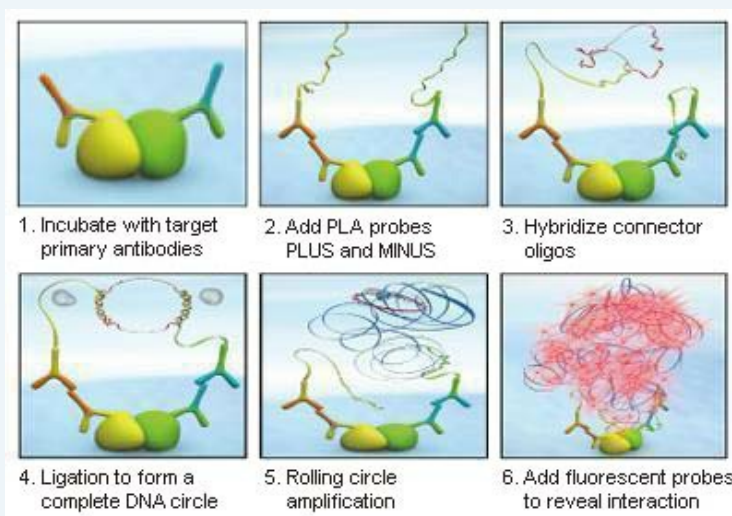
List All

Specification

Product Description: This protein protein interaction antibody pair set comes with two antibodies to detect the protein-protein interaction, one against the NCK1 protein, and the other against the BLNK protein for use in *in situ* Proximity Ligation Assay. See Publication Reference below.

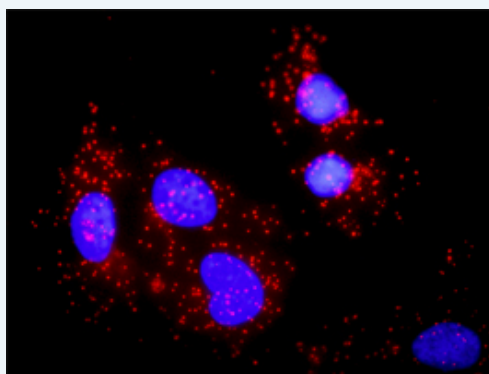
Application Image

In situ Proximity Ligation Assay (Cell)



Reactivity: Human

Quality Control Testing: Protein protein interaction immunofluorescence result.



Representative image of Proximity Ligation Assay of protein-protein interactions between NCK1 and BLNK. HeLa cells were stained with anti-NCK1 rabbit purified polyclonal antibody 1:1200 and anti-BLNK mouse monoclonal antibody 1:50. Each red dot represents the detection of protein-protein interaction complex. The images were analyzed using an optimized freeware ([BlobFinder](#)) download from The Centre for Image Analysis at Uppsala University.

Supplied Product: Antibody pair set content:
 1. NCK1 rabbit purified polyclonal antibody (20 ug)
 2. BLNK mouse monoclonal antibody (40 ug)
 *Reagents are sufficient for at least 30-50 assays using recommended protocols.

Storage Instruction: Store reagents of the antibody pair set at -20°C or lower. Please aliquot to avoid repeated freeze thaw cycle. Reagents should be returned to -

20°C storage immediately after use.

MSDS:

 [Download](#)

Publication Reference

1. [An analysis of protein-protein interactions in cross-talk pathways reveals CRKL as a novel prognostic marker in hepatocellular carcinoma.](#)
Liu CH, Chen TC, Chau GY, Jan YH, Chen CH, Hsu CN, Lin KT, Juang YL, Lu PJ, Cheng HC, Chen MH, Chang CF, Ting YS, Kao CY, Hsiao M, Huang CY. Mol Cell Proteomics. 2013 Feb 8. [Epub ahead of print]

Applications

In situ Proximity Ligation Assay (Cell)

[NCK1](#) [BLNK](#)

Gene Information

Entrez GeneID: [4690](#)

Gene Name: NCK1

Gene Alias: MGC12668,NCK,NCKalpha

Gene Description: NCK adaptor protein 1

Omim ID: [600508](#)

Gene Ontology: [Hyperlink](#)

Gene Summary: The protein encoded by this gene is one of the signaling and transforming proteins containing Src homology 2 and 3 (SH2 and SH3) domains. It is located in the cytoplasm and is an adaptor protein involved in transducing signals from receptor tyrosine kinases to downstream signal recipients such as RAS. [provided by RefSeq]

Other Designations: NCK tyrosine kinase,SH2/SH3 adaptor protein NCK-alpha,melanoma NCK protein,non-catalytic region of tyrosine kinase

Gene Information

Entrez GeneID: [29760](#)

Gene Name: BLNK

Gene Alias: BASH,BLNK-S,LY57,MGC111051,SLP-65,SLP65

Gene Description: B-cell linker

Omim ID: [604515](#)

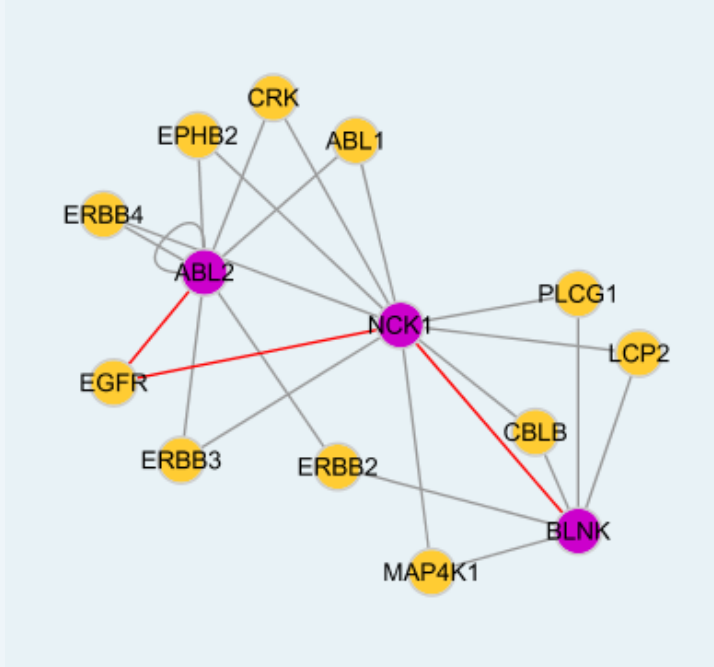
Gene Ontology: [Hyperlink](#)

Gene Summary: This gene encodes a cytoplasmic linker or adaptor protein that plays a critical role in B cell development. This protein bridges B cell receptor-associated kinase activation with downstream signaling pathways, thereby affecting various biological functions. The phosphorylation of five tyrosine residues is necessary for this protein to nucleate distinct signaling effectors following B cell receptor activation. Mutations in this gene cause hypoglobulinemia and absent B cells, a disease in which the pro- to pre-B-cell transition is developmentally blocked. Deficiency in this protein has also been shown in some cases of pre-B acute

lymphoblastic leukemia. Alternatively spliced transcript variants encoding different isoforms have been found for this gene. [provided by RefSeq]

Other Designations: B cell linker protein,B-cell adapter containing a SH2 domain protein,B-cell adapter containing a Src homology 2 domain protein,OTTHUMP00000020167,Src homology 2 domain-containing leukocyte protein of 65 kDa

Interactome 1



Interactome 2

