



SZABO SCANDIC

Part of Europa Biosite

Produktinformation



Forschungsprodukte & Biochemikalien



Zellkultur & Verbrauchsmaterial



Diagnostik & molekulare Diagnostik



Laborgeräte & Service

Weitere Information auf den folgenden Seiten!
See the following pages for more information!



Lieferung & Zahlungsart

siehe unsere [Liefer- und Versandbedingungen](#)

Zuschläge

- Mindermengenzuschlag
- Trockeneiszuschlag
- Gefahrgutzuschlag
- Expressversand

SZABO-SCANDIC HandelsgmbH

Quellenstraße 110, A-1100 Wien

T. +43(0)1 489 3961-0

F. +43(0)1 489 3961-7

mail@szabo-scandic.com

www.szabo-scandic.com

[linkedin.com/company/szaboscandic](https://www.linkedin.com/company/szaboscandic) 

CDC20 & BUB1B Protein Protein Interaction Antibody Pair

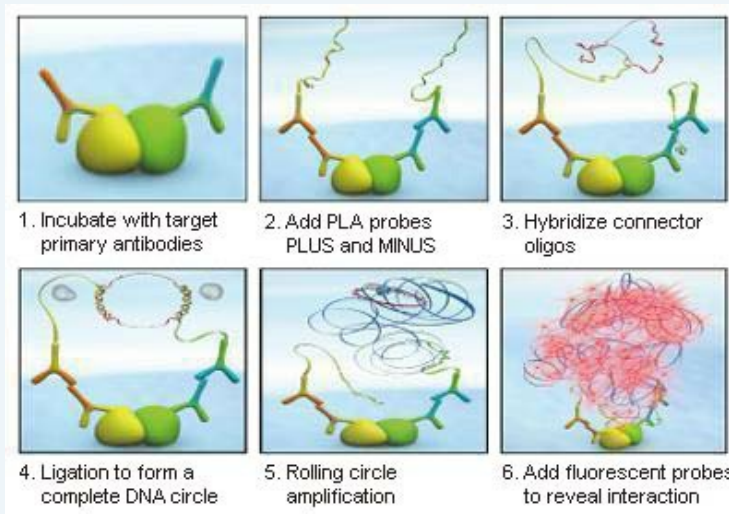
Catalog # : DI0076

規格 : [1 Set]

List All

Specification

Product Description: This protein protein interaction antibody pair set comes with two antibodies to detect the protein-protein interaction, one against the CDC20 protein, and the other against the BUB1B protein for use in *in situ* Proximity Ligation Assay. See Publication Reference below.

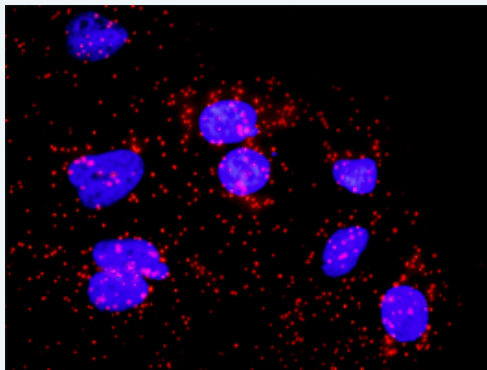


Application Image

In situ Proximity Ligation Assay (Cell)

Reactivity: Human

Quality Control Testing: Protein protein interaction immunofluorescence result.



Representative image of Proximity Ligation Assay of protein-protein interactions between CDC20 and BUB1B. HeLa cells were stained with anti-CDC20 rabbit purified polyclonal antibody 1:1200 and anti-BUB1B mouse monoclonal antibody 1:50. Each red dot represents the detection of protein-protein interaction complex. The images were analyzed using an optimized freeware ([BlobFinder](#)) download from The Centre for Image Analysis at Uppsala University.

Supplied Product: Antibody pair set content:
 1. CDC20 rabbit purified polyclonal antibody (20 ug)
 2. BUB1B mouse monoclonal antibody (40 ug)
 *Reagents are sufficient for at least 30-50 assays using recommended protocols.

Storage Instruction: Store reagents of the antibody pair set at -20°C or lower. Please aliquot to avoid repeated freeze thaw cycle. Reagents should be returned to -

20°C storage immediately after use.

MSDS:

 [Download](#)

Publication Reference

1. [An analysis of protein-protein interactions in cross-talk pathways reveals CRKL as a novel prognostic marker in hepatocellular carcinoma.](#)
Liu CH, Chen TC, Chau GY, Jan YH, Chen CH, Hsu CN, Lin KT, Juang YL, Lu PJ, Cheng HC, Chen MH, Chang CF, Ting YS, Kao CY, Hsiao M, Huang CY. Mol Cell Proteomics. 2013 Feb 8. [Epub ahead of print]

Applications

In situ Proximity Ligation Assay (Cell)

[BUB1B](#) [CDC20](#)

Gene Information

Entrez GeneID: [991](#)

Gene Name: CDC20

Gene Alias: CDC20A,MGC102824,bA276H19.3,p55CDC

Gene Description: cell division cycle 20 homolog (S. cerevisiae)

Omim ID: [603618](#)

Gene Ontology: [Hyperlink](#)

Gene Summary: CDC20 appears to act as a regulatory protein interacting with several other proteins at multiple points in the cell cycle. It is required for two microtubule-dependent processes, nuclear movement prior to anaphase and chromosome separation. [provided by RefSeq]

Other Designations: CDC20 cell division cycle 20 homolog,OTTHUMP00000008571,OTTHUMP00000008572,cell division cycle 20

Gene Information

Entrez GeneID: [701](#)

Gene Name: BUB1B

Gene Alias: BUB1beta,BUBR1,Bub1A,MAD3L,SSK1,hBUBR1

Gene Description: budding uninhibited by benzimidazoles 1 homolog beta (yeast)

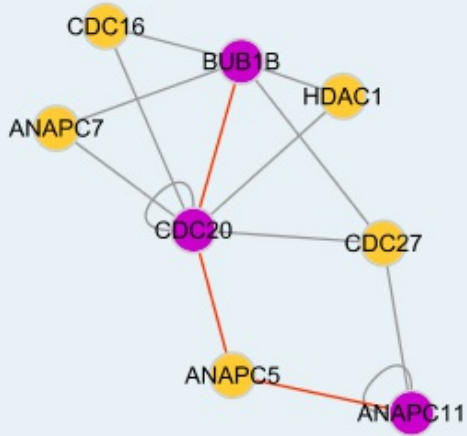
Omim ID: [114500](#), [602860](#)

Gene Ontology: [Hyperlink](#)

Gene Summary: This gene encodes a kinase involved in spindle checkpoint function. The protein has been localized to the kinetochore and plays a role in the inhibition of the anaphase-promoting complex/cyclosome (APC/C), delaying the onset of anaphase and ensuring proper chromosome segregation. Impaired spindle checkpoint function has been found in many forms of cancer. [provided by RefSeq]

Other Designations: BUB1 budding uninhibited by benzimidazoles 1 homolog beta,MAD3/BUB1-related protein kinase,budding uninhibited by

Interactome 1



Interactome 2

