



SZABO SCANDIC

Part of Europa Biosite

Produktinformation



Forschungsprodukte & Biochemikalien



Zellkultur & Verbrauchsmaterial



Diagnostik & molekulare Diagnostik



Laborgeräte & Service

Weitere Information auf den folgenden Seiten!
See the following pages for more information!



Lieferung & Zahlungsart

siehe unsere [Liefer- und Versandbedingungen](#)

Zuschläge

- Mindermengenzuschlag
- Trockeneiszuschlag
- Gefahrgutzuschlag
- Expressversand

SZABO-SCANDIC HandelsgmbH

Quellenstraße 110, A-1100 Wien

T. +43(0)1 489 3961-0

F. +43(0)1 489 3961-7

mail@szabo-scandic.com

www.szabo-scandic.com

[linkedin.com/company/szaboscandic](https://www.linkedin.com/company/szaboscandic) 

CDC45L & CDKN1A Protein Protein Interaction Antibody Pair

Catalog # : DI0092

規格 : [1 Set]

List All

Specification

Product Description: This protein protein interaction antibody pair set comes with two antibodies to detect the protein-protein interaction, one against the CDC45L protein, and the other against the CDKN1A protein for use in *in situ* Proximity Ligation Assay. See Publication Reference below.

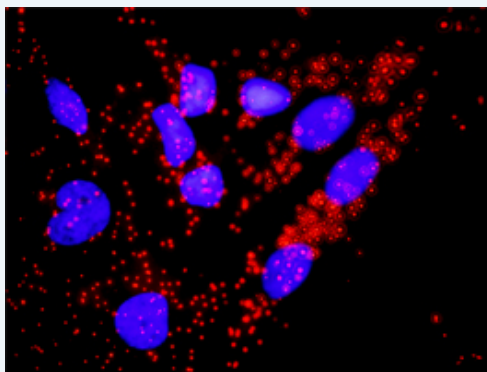
Application Image

In situ Proximity Ligation Assay (Cell)



Reactivity: Human

Quality Control Testing: Protein protein interaction immunofluorescence result.



Representative image of Proximity Ligation Assay of protein-protein interactions between CDC45L and CDKN1A. HeLa cells were stained with anti-CDC45L rabbit purified polyclonal antibody 1:1200 and anti-CDKN1A mouse monoclonal antibody 1:50. Each red dot represents the detection of protein-protein interaction complex. The images were analyzed using an optimized freeware ([BlobFinder](#)) download from The Centre for Image Analysis at Uppsala University.

Supplied Product: Antibody pair set content:
 1. CDC45L rabbit purified polyclonal antibody (20 ug)
 2. CDKN1A mouse monoclonal antibody (40 ug)
 *Reagents are sufficient for at least 30-50 assays using recommended protocols.

Storage Instruction: Store reagents of the antibody pair set at -20°C or lower. Please aliquot to avoid repeated freeze thaw cycle. Reagents should be returned to -

20°C storage immediately after use.

MSDS:

 [Download](#)

Publication Reference

1. [An analysis of protein-protein interactions in cross-talk pathways reveals CRKL as a novel prognostic marker in hepatocellular carcinoma.](#)
Liu CH, Chen TC, Chau GY, Jan YH, Chen CH, Hsu CN, Lin KT, Juang YL, Lu PJ, Cheng HC, Chen MH, Chang CF, Ting YS, Kao CY, Hsiao M, Huang CY. Mol Cell Proteomics. 2013 Feb 8. [Epub ahead of print]

Applications

In situ Proximity Ligation Assay (Cell)

[CDKN1A](#) [CDC45L](#)

Gene Information

Entrez GeneID: [8318](#)

Gene Name: CDC45L

Gene Alias: CDC45,CDC45L2,PORC-PI-1

Gene Description: CDC45 cell division cycle 45-like (S. cerevisiae)

Omim ID: [603465](#)

Gene Ontology: [Hyperlink](#)

Gene Summary: The protein encoded by this gene was identified by its strong similarity with *Saccharomyces cerevisiae* Cdc45, an essential protein required to the initiation of DNA replication. Cdc45 is a member of the highly conserved multiprotein complex including Cdc6/Cdc18, the minichromosome maintenance proteins (MCMs) and DNA polymerase, which is important for early steps of DNA replication in eukaryotes. This protein has been shown to interact with MCM7 and DNA polymerase alpha. Studies of the similar gene in *Xenopus* suggested that this protein play a pivotal role in the loading of DNA polymerase alpha onto chromatin. Multiple polyadenylation sites of this gene are reported. [provided by RefSeq]

Other Designations: CDC45 (cell division cycle 45, *S.cerevisiae*, homolog)-like,CDC45-like,CDC45-related protein,cell division cycle 45-like 2,human CDC45

Gene Information

Entrez GeneID: [1026](#)

Gene Name: CDKN1A

Gene Alias: CAP20,CDKN1,CIP1,MDA-6,P21,SDI1,WAF1,p21CIP1

Gene Description: cyclin-dependent kinase inhibitor 1A (p21, Cip1)

Omim ID: [116899](#)

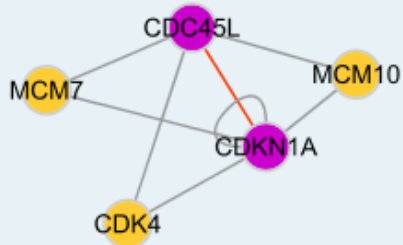
Gene Ontology: [Hyperlink](#)

Gene Summary: This gene encodes a potent cyclin-dependent kinase inhibitor. The encoded protein binds to and inhibits the activity of cyclin-CDK2 or -CDK4 complexes, and thus functions as a regulator of cell cycle

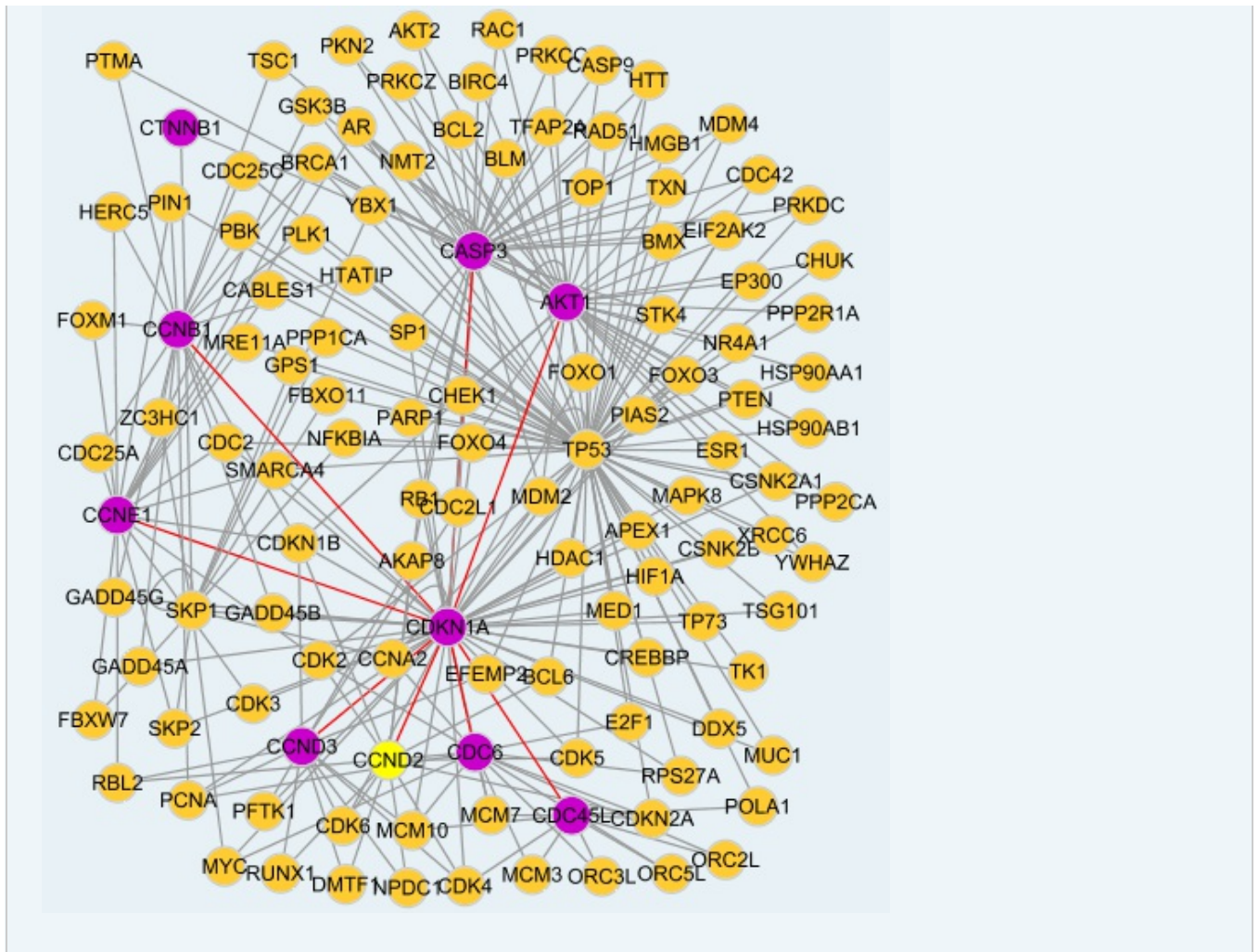
progression at G1. The expression of this gene is tightly controlled by the tumor suppressor protein p53, through which this protein mediates the p53-dependent cell cycle G1 phase arrest in response to a variety of stress stimuli. This protein can interact with proliferating cell nuclear antigen (PCNA), a DNA polymerase accessory factor, and plays a regulatory role in S phase DNA replication and DNA damage repair. This protein was reported to be specifically cleaved by CASP3-like caspases, which thus leads to a dramatic activation of CDK2, and may be instrumental in the execution of apoptosis following caspase activation. Two alternatively spliced variants, which encode an identical protein, have been reported. [provided by RefSeq]

Other Designations: CDK-interaction protein 1,DNA synthesis inhibitor,OTTHUMP00000016298,cyclin-dependent kinase inhibitor 1A,melanoma differentiation associated protein 6,wild-type p53-activated fragment 1

Interactome 1



Interactome 2



[服務條款](#) | [隱私權政策](#) | [著作及商標](#) | [網站地圖](#)

©2016 亞諾法生技股份有限公司 Abnova Corporation. 版權所有.