



# SZABO SCANDIC

Part of Europa Biosite

## Produktinformation



Forschungsprodukte & Biochemikalien



Zellkultur & Verbrauchsmaterial



Diagnostik & molekulare Diagnostik



Laborgeräte & Service

Weitere Information auf den folgenden Seiten!  
See the following pages for more information!



### Lieferung & Zahlungsart

siehe unsere [Liefer- und Versandbedingungen](#)

### Zuschläge

- Mindermengenzuschlag
- Trockeneiszuschlag
- Gefahrgutzuschlag
- Expressversand

### SZABO-SCANDIC HandelsgmbH

Quellenstraße 110, A-1100 Wien

T. +43(0)1 489 3961-0

F. +43(0)1 489 3961-7

[mail@szabo-scandic.com](mailto:mail@szabo-scandic.com)

[www.szabo-scandic.com](http://www.szabo-scandic.com)

[linkedin.com/company/szaboscandic](https://www.linkedin.com/company/szaboscandic) 

## PIAS2 & CDKN2B Protein Protein Interaction Antibody Pair

Catalog # : DI0095

規格 : [ 1 Set ]

List All

### Specification

**Product Description:** This protein protein interaction antibody pair set comes with two antibodies to detect the protein-protein interaction, one against the PIAS2 protein, and the other against the CDKN2B protein for use in *in situ* Proximity Ligation Assay. See Publication Reference below.

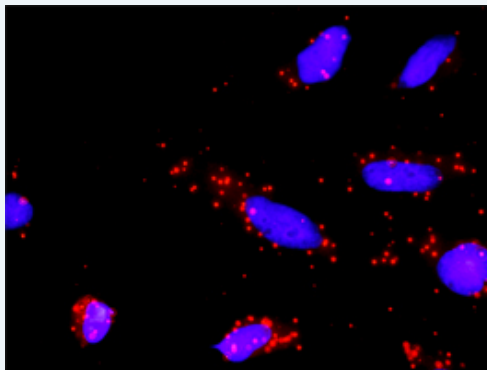
### Application Image

*In situ* Proximity Ligation Assay (Cell)



**Reactivity:** Human

**Quality Control Testing:** Protein protein interaction immunofluorescence result.



Representative image of Proximity Ligation Assay of protein-protein interactions between PIAS2 and CDKN2B. HeLa cells were stained with anti-PIAS2 rabbit purified polyclonal antibody 1:1200 and anti-CDKN2B mouse monoclonal antibody 1:50. Each red dot represents the detection of protein-protein interaction complex. The images were analyzed using an optimized freeware ([BlobFinder](#)) download from The Centre for Image Analysis at Uppsala University.

**Supplied Product:** Antibody pair set content:  
 1. PIAS2 rabbit purified polyclonal antibody (20 ug)  
 2. CDKN2B mouse monoclonal antibody (40 ug)  
 \*Reagents are sufficient for at least 30-50 assays using recommended protocols.

**Storage Instruction:** Store reagents of the antibody pair set at -20°C or lower. Please aliquot to avoid repeated freeze thaw cycle. Reagents should be returned to -

20°C storage immediately after use.

MSDS:  [Download](#)

### Publication Reference

1. [An analysis of protein-protein interactions in cross-talk pathways reveals CRKL as a novel prognostic marker in hepatocellular carcinoma.](#)  
Liu CH, Chen TC, Chau GY, Jan YH, Chen CH, Hsu CN, Lin KT, Juang YL, Lu PJ, Cheng HC, Chen MH, Chang CF, Ting YS, Kao CY, Hsiao M, Huang CY. Mol Cell Proteomics. 2013 Feb 8. [Epub ahead of print]

### Applications

#### *In situ* Proximity Ligation Assay (Cell)

[CDKN2B](#) [PIAS2](#)

### Gene Information

Entrez GeneID: [9063](#)

Gene Name: PIAS2

Gene Alias: MGC102682,MIZ1,PIASX,PIASX-ALPHA,PIASX-BETA,SIZ2,ZMIZ4,miz

Gene Description: protein inhibitor of activated STAT, 2

Omim ID: [603567](#)

Gene Ontology: [Hyperlink](#)

**Gene Summary:** This gene encodes a protein involved in the regulation of transcription factors involved in MAP kinase signaling. The symbol MIZ1 has also been associated with ZBTB17 which is a different gene located on chromosome 1. Two alternatively spliced transcripts encoding different isoforms have been described. [provided by RefSeq]

**Other Designations:** Msx-interacting-zinc finger,protein inhibitor of activated STAT X,zinc finger, MIZ-type containing 4

### Gene Information

Entrez GeneID: [1030](#)

Gene Name: CDKN2B

Gene Alias: CDK4I,INK4B,MTS2,P15,TP15,p15INK4b

Gene Description: cyclin-dependent kinase inhibitor 2B (p15, inhibits CDK4)

Omim ID: [600431](#)

Gene Ontology: [Hyperlink](#)

**Gene Summary:** This gene lies adjacent to the tumor suppressor gene CDKN2A in a region that is frequently mutated and deleted in a wide variety of tumors. This gene encodes a cyclin-dependent kinase inhibitor, which forms a complex with CDK4 or CDK6, and prevents the activation of the CDK kinases, thus the encoded protein functions as a cell growth regulator that controls cell cycle G1 progression. The expression of this gene was found to be dramatically induced by TGF beta, which suggested its role in the TGF beta induced growth inhibition. Two alternatively spliced transcript variants of this gene, which encode

distinct proteins, have been reported. [provided by RefSeq

**Other** CDK inhibitory protein,CDK4B  
**Designations:** inhibitor,OTTHUMP00000021154,OTTHUMP00000021155,cyclin-dependent kinase 4 inhibitor B,cyclin-dependent kinase inhibitor 2B,cyclin-dependent kinases 4 and 6 binding protein,multiple tumor suppressor 2,p14\_CDK inhibitor,p14\_INK4

### Interactome 1



### Interactome 2

