



SZABO SCANDIC

Part of Europa Biosite

Produktinformation



Forschungsprodukte & Biochemikalien



Zellkultur & Verbrauchsmaterial



Diagnostik & molekulare Diagnostik



Laborgeräte & Service

Weitere Information auf den folgenden Seiten!
See the following pages for more information!



Lieferung & Zahlungsart

siehe unsere [Liefer- und Versandbedingungen](#)

Zuschläge

- Mindermengenzuschlag
- Trockeneiszuschlag
- Gefahrgutzuschlag
- Expressversand

SZABO-SCANDIC HandelsgmbH

Quellenstraße 110, A-1100 Wien

T. +43(0)1 489 3961-0

F. +43(0)1 489 3961-7

mail@szabo-scandic.com

www.szabo-scandic.com

[linkedin.com/company/szaboscandic](https://www.linkedin.com/company/szaboscandic) 

MAP3K7 & CHUK Protein Protein Interaction Antibody Pair

Catalog # : DI0099

規格 : [1 Set]

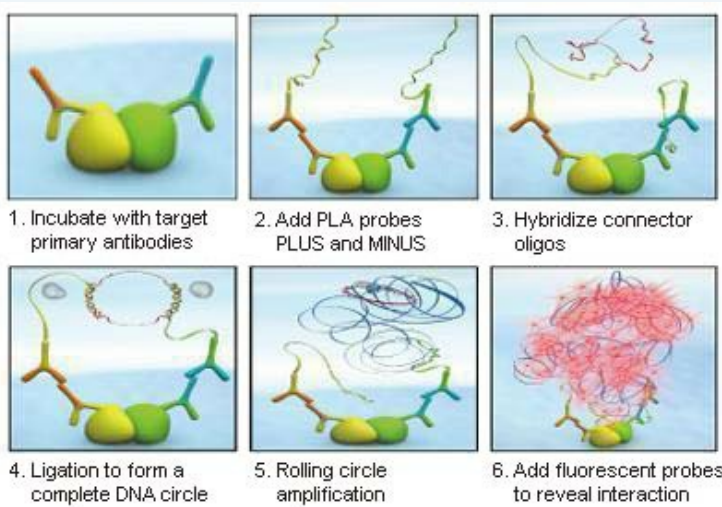
[List All](#)

Specification

Product Description: This protein protein interaction antibody pair set comes with two antibodies to detect the protein-protein interaction, one against the MAP3K7 protein, and the other against the CHUK protein for use in *in situ* Proximity Ligation Assay. See Publication Reference below.

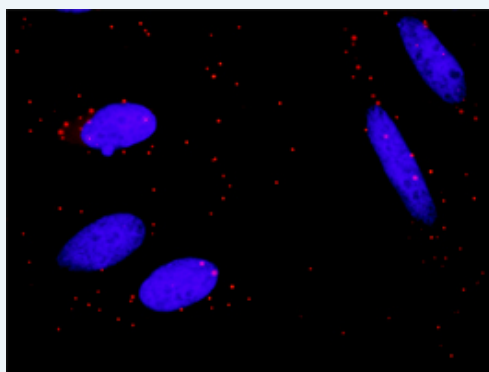
Application Image

In situ Proximity Ligation Assay (Cell)



Reactivity: Human

Quality Control Testing: Protein protein interaction immunofluorescence result.



Representative image of Proximity Ligation Assay of protein-protein interactions between MAP3K7 and CHUK. HeLa cells were stained with anti-MAP3K7 rabbit purified polyclonal antibody 1:1200 and anti-CHUK mouse monoclonal antibody 1:50. Each red dot represents the detection of protein-protein interaction complex. The images were analyzed using an optimized freeware ([BlobFinder](#)) download from The Centre for Image Analysis at Uppsala University.

Supplied Product: Antibody pair set content:
 1. MAP3K7 rabbit purified polyclonal antibody (20 ug)
 2. CHUK mouse monoclonal antibody (40 ug)
 *Reagents are sufficient for at least 30-50 assays using recommended protocols.

Storage Instruction: Store reagents of the antibody pair set at -20°C or lower. Please aliquot to avoid repeated freeze thaw cycle. Reagents should be returned to -

MSDS:[Download](#)**Publication Reference**

1. An analysis of protein-protein interactions in cross-talk pathways reveals CRKL as a novel prognostic marker in hepatocellular carcinoma. Liu CH, Chen TC, Chau GY, Jan YH, Chen CH, Hsu CN, Lin KT, Juang YL, Lu PJ, Cheng HC, Chen MH, Chang CF, Ting YS, Kao CY, Hsiao M, Huang CY. Mol Cell Proteomics. 2013 Feb 8. [Epub ahead of print]

Applications***In situ* Proximity Ligation Assay (Cell)**[CHUK](#) [MAP3K7](#)**Gene Information****Entrez GeneID:** [6885](#)**Gene Name:** MAP3K7**Gene Alias:** TAK1,TGF1a**Gene Description:** mitogen-activated protein kinase kinase kinase 7**Omim ID:** [602614](#)**Gene Ontology:** [Hyperlink](#)

Gene Summary: The protein encoded by this gene is a member of the serine/threonine protein kinase family. This kinase mediates the signaling transduction induced by TGF beta and morphogenetic protein (BMP), and controls a variety of cell functions including transcription regulation and apoptosis. In response to IL-1, this protein forms a kinase complex including TRAF6, MAP3K7P1/TAB1 and MAP3K7P2/TAB2; this complex is required for the activation of nuclear factor kappa B. This kinase can also activate MAPK8/JNK, MAP2K4/MKK4, and thus plays a role in the cell response to environmental stresses. Four alternatively spliced transcript variants encoding distinct isoforms have been reported. [provided by RefSeq]

Other Designations: OTTHUMP00000016870,OTTHUMP00000016871,OTTHUMP00000016872,OTTHUMP00000016873,TGF-beta activated kinase 1,transforming growth factor-beta-activated kinase 1

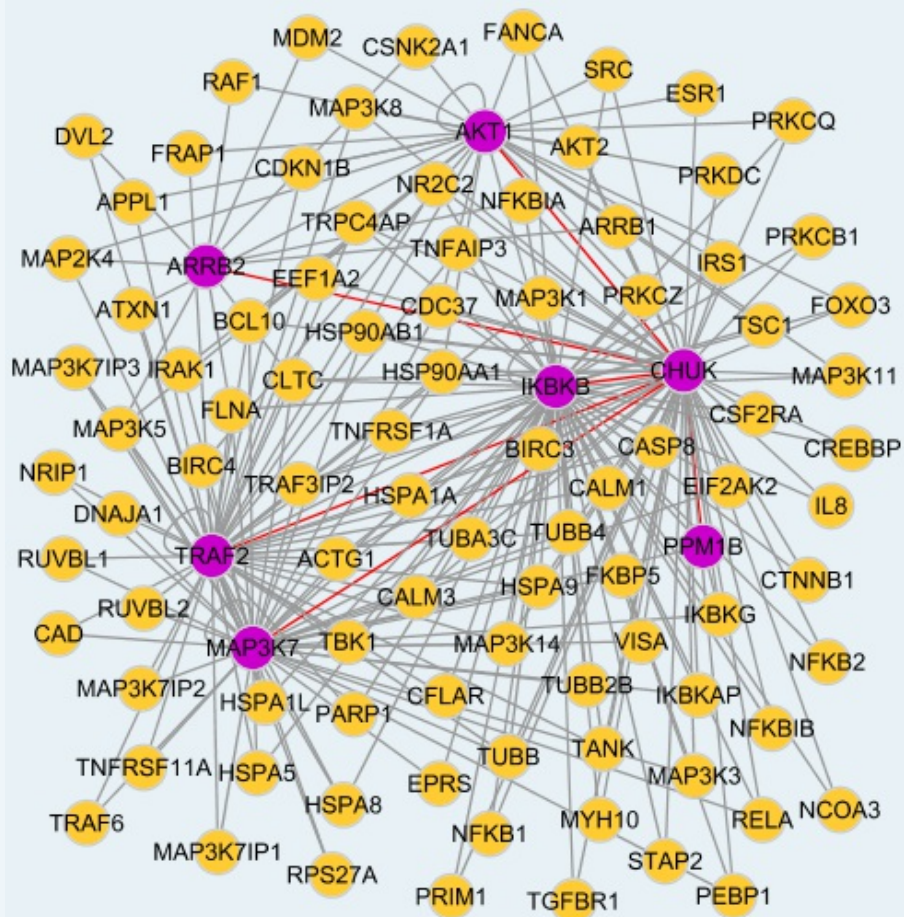
Gene Information**Entrez GeneID:** [1147](#)**Gene Name:** CHUK**Gene Alias:** IKBKA,IKK-alpha,IKK1,IKKA,NFKBIKA,TCF16**Gene Description:** conserved helix-loop-helix ubiquitous kinase**Omim ID:** [600664](#)**Gene Ontology:** [Hyperlink](#)

Gene Summary: This gene encodes a member of the serine/threonine protein kinase family. The encoded protein, a component of a cytokine-activated

Other Designations: I-kappa-B kinase 1,I-kappa-B kinase-alpha,IKK-a kinase,IkB kinase alpha subunit,Nuclear factor NFkappaB inhibitor kinase alpha,OTTHUMP00000020273,conserved helix-loop ubiquitous kinase

Network diagram illustrating interactions between CLTC and CHUK. CLTC and CHUK are central purple nodes, while other proteins are yellow nodes. Red lines highlight interactions between CLTC and MAP3K7, and between CHUK and MAP3K7.

2016/5/19



[服務條款](#) | [隱私權政策](#) | [著作及商標](#) | [網站地圖](#)

©2016 亞諾法生技股份有限公司 Abnova Corporation. 版權所有.