



# SZABO SCANDIC

Part of Europa Biosite

## Produktinformation



Forschungsprodukte & Biochemikalien



Zellkultur & Verbrauchsmaterial



Diagnostik & molekulare Diagnostik



Laborgeräte & Service

Weitere Information auf den folgenden Seiten!  
See the following pages for more information!



### Lieferung & Zahlungsart

siehe unsere [Liefer- und Versandbedingungen](#)

### Zuschläge

- Mindermengenzuschlag
- Trockeneiszuschlag
- Gefahrgutzuschlag
- Expressversand

### SZABO-SCANDIC HandelsgmbH

Quellenstraße 110, A-1100 Wien

T. +43(0)1 489 3961-0

F. +43(0)1 489 3961-7

[mail@szabo-scandic.com](mailto:mail@szabo-scandic.com)

[www.szabo-scandic.com](http://www.szabo-scandic.com)

[linkedin.com/company/szaboscandic](https://www.linkedin.com/company/szaboscandic) 

## PPM1B & CHUK Protein Protein Interaction Antibody Pair

Catalog # : DI0101

規格 : [ 1 Set ]

List All

### Specification

**Product Description:** This protein protein interaction antibody pair set comes with two antibodies to detect the protein-protein interaction, one against the PPM1B protein, and the other against the CHUK protein for use in *in situ* Proximity Ligation Assay. See Publication Reference below.

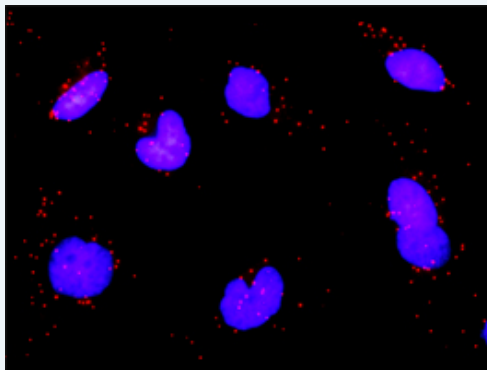
### Application Image

*In situ* Proximity Ligation Assay (Cell)



**Reactivity:** Human

**Quality Control Testing:** Protein protein interaction immunofluorescence result.



Representative image of Proximity Ligation Assay of protein-protein interactions between PPM1B and CHUK. HeLa cells were stained with anti-PPM1B rabbit purified polyclonal antibody 1:1200 and anti-CHUK mouse monoclonal antibody 1:50. Each red dot represents the detection of protein-protein interaction complex. The images were analyzed using an optimized freeware ([BlobFinder](#)) download from The Centre for Image Analysis at Uppsala University.

**Supplied Product:** Antibody pair set content:  
 1. PPM1B rabbit purified polyclonal antibody (20 ug)  
 2. CHUK mouse monoclonal antibody (40 ug)  
 \*Reagents are sufficient for at least 30-50 assays using recommended protocols.

**Storage Instruction:** Store reagents of the antibody pair set at -20°C or lower. Please aliquot to avoid repeated freeze thaw cycle. Reagents should be returned to -

20°C storage immediately after use.

MSDS:  [Download](#)

## Publication Reference

1. [An analysis of protein-protein interactions in cross-talk pathways reveals CRKL as a novel prognostic marker in hepatocellular carcinoma.](#)  
Liu CH, Chen TC, Chau GY, Jan YH, Chen CH, Hsu CN, Lin KT, Juang YL, Lu PJ, Cheng HC, Chen MH, Chang CF, Ting YS, Kao CY, Hsiao M, Huang CY. Mol Cell Proteomics. 2013 Feb 8. [Epub ahead of print]

## Applications

### *In situ* Proximity Ligation Assay (Cell)

[CHUK](#) [PPM1B](#)

## Gene Information

Entrez GeneID: [5495](#)

Gene Name: PPM1B

Gene Alias: MGC21657,PP2C-beta-X,PP2CB,PP2CBETA,PPC2BETAX

Gene Description: protein phosphatase 1B (formerly 2C), magnesium-dependent, beta isoform

Omim ID: [603770](#)

Gene Ontology: [Hyperlink](#)

**Gene Summary:** The protein encoded by this gene is a member of the PP2C family of Ser/Thr protein phosphatases. PP2C family members are known to be negative regulators of cell stress response pathways. This phosphatase has been shown to dephosphorylate cyclin-dependent kinases (CDKs), and thus may be involved in cell cycle control. Overexpression of this phosphatase is reported to cause cell-growth arrest or cell death. Alternative splicing results in multiple transcript variants encoding different isoforms. Additional transcript variants have been described, but currently do not represent full-length sequences. [provided by RefSeq]

**Other Designations:** OTTHUMP00000158953,OTTHUMP00000158955,protein phosphatase 1B,protein phosphatase 2C beta isoform,protein phosphatase 2C-like protein

## Gene Information

Entrez GeneID: [1147](#)

Gene Name: CHUK

Gene Alias: IKBKA,IKK-alpha,IKK1,IKKA,NFKBIKA,TCF16

Gene Description: conserved helix-loop-helix ubiquitous kinase

Omim ID: [600664](#)

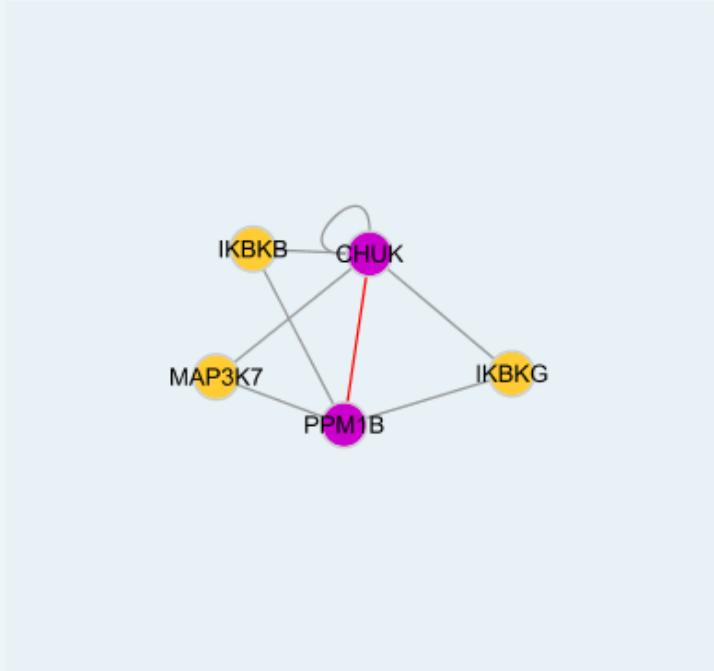
Gene Ontology: [Hyperlink](#)

**Gene Summary:** This gene encodes a member of the serine/threonine protein kinase family. The encoded protein, a component of a cytokine-activated protein complex that is an inhibitor of the essential transcription factor

NF-kappa-B complex, phosphorylates sites that trigger the degradation of the inhibitor via the ubiquination pathway, thereby activating the transcription factor. [provided by RefSeq]

**Other Designations:** I-kappa-B kinase 1,I-kappa-B kinase-alpha,IKK-a kinase,IkB kinase alpha subunit,Nuclear factor NFkappaB inhibitor kinase alpha,OTTHUMP00000020273,conserved helix-loop ubiquitous kinase

### Interactome 1



### Interactome 2

