



# SZABO SCANDIC

Part of Europa Biosite

## Produktinformation



Forschungsprodukte & Biochemikalien



Zellkultur & Verbrauchsmaterial



Diagnostik & molekulare Diagnostik



Laborgeräte & Service

Weitere Information auf den folgenden Seiten!  
See the following pages for more information!



### Lieferung & Zahlungsart

siehe unsere [Liefer- und Versandbedingungen](#)

### Zuschläge

- Mindermengenzuschlag
- Trockeneiszuschlag
- Gefahrgutzuschlag
- Expressversand

### SZABO-SCANDIC HandelsgmbH

Quellenstraße 110, A-1100 Wien

T. +43(0)1 489 3961-0

F. +43(0)1 489 3961-7

[mail@szabo-scandic.com](mailto:mail@szabo-scandic.com)

[www.szabo-scandic.com](http://www.szabo-scandic.com)

[linkedin.com/company/szaboscandic](https://www.linkedin.com/company/szaboscandic) 

## HIP1 & CLTC Protein Protein Interaction Antibody Pair

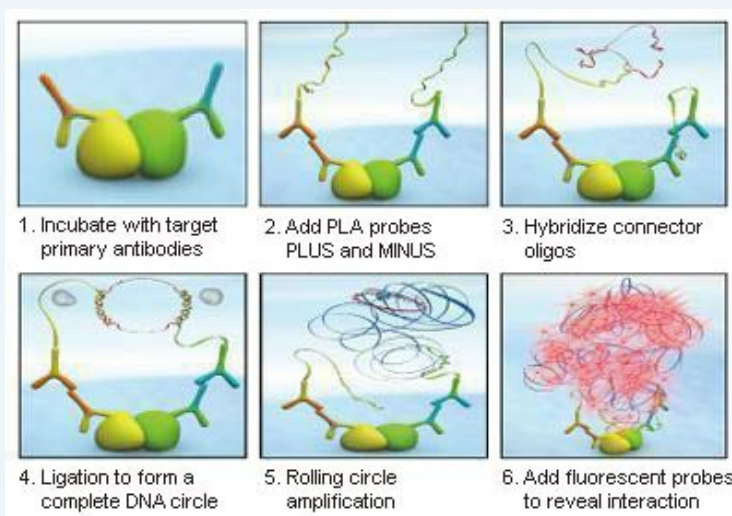
Catalog # : DI0102

規格 : [ 1 Set ]

List All

### Specification

**Product Description:** This protein protein interaction antibody pair set comes with two antibodies to detect the protein-protein interaction, one against the HIP1 protein, and the other against the CLTC protein for use in *in situ* Proximity Ligation Assay. See Publication Reference below.

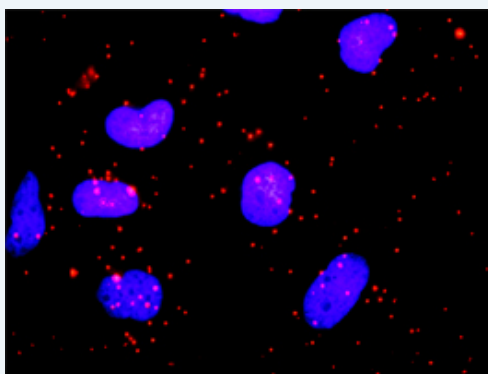


### Application Image

*In situ* Proximity Ligation Assay (Cell)

**Reactivity:** Human

**Quality Control Testing:** Protein protein interaction immunofluorescence result.



Representative image of Proximity Ligation Assay of protein-protein interactions between HIP1 and CLTC. HeLa cells were stained with anti-HIP1 rabbit purified polyclonal antibody 1:1200 and anti-CLTC mouse monoclonal antibody 1:50. Each red dot represents the detection of protein-protein interaction complex. The images were analyzed using an optimized freeware ([BlobFinder](#)) download from The Centre for Image Analysis at Uppsala University.

**Supplied Product:** Antibody pair set content:  
 1. HIP1 rabbit purified polyclonal antibody (20 ug)  
 2. CLTC mouse monoclonal antibody (40 ug)  
 \*Reagents are sufficient for at least 30-50 assays using recommended protocols.

**Storage Instruction:** Store reagents of the antibody pair set at -20°C or lower. Please aliquot to avoid repeated freeze thaw cycle. Reagents should be returned to -

20°C storage immediately after use.

MSDS:

 [Download](#)

---

### Publication Reference

---

1. [An analysis of protein-protein interactions in cross-talk pathways reveals CRKL as a novel prognostic marker in hepatocellular carcinoma.](#)  
Liu CH, Chen TC, Chau GY, Jan YH, Chen CH, Hsu CN, Lin KT, Juang YL, Lu PJ, Cheng HC, Chen MH, Chang CF, Ting YS, Kao CY, Hsiao M, Huang CY. Mol Cell Proteomics. 2013 Feb 8. [Epub ahead of print]

---

### Applications

---

#### *In situ* Proximity Ligation Assay (Cell)

---

[CLTC](#) [HIP1](#)

---

### Gene Information

---

Entrez GeneID: [3092](#)

Gene Name: HIP1

Gene Alias: ILWEQ,MGC126506

Gene Description: huntingtin interacting protein 1

Omim ID: [176807](#), [601767](#)

Gene Ontology: [Hyperlink](#)

**Gene Summary:** The product of this gene is a membrane-associated protein that colocalizes with huntingtin. This protein has similarities to cytoskeleton proteins and its interaction with huntingtin is thought to play a functional role in the cell filament network. Loss of normal huntingtin-HIP1 interaction in Huntington disease may contribute to a defect in membrane-cytoskeletal integrity in the brain. This gene could help in the understanding of the normal function of huntingtin and also the pathogenesis of Huntington disease. It also has been implicated in the pathogenesis of hematopoietic malignancies. An alternative splice variant of this gene has been described but its full length sequence has not been determined. [provided by RefSeq]

Other Designations: -

---

### Gene Information

---

Entrez GeneID: [1213](#)

Gene Name: CLTC

Gene Alias: CHC,CHC17,CLH-17,CLTCL2,Hc,KIAA0034

Gene Description: clathrin, heavy chain (Hc)

Omim ID: [118955](#)

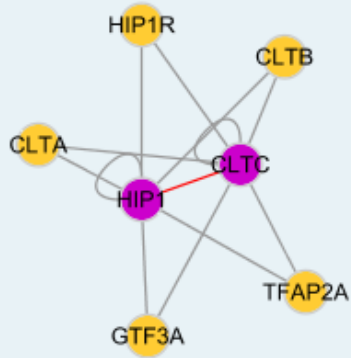
Gene Ontology: [Hyperlink](#)

**Gene Summary:** Clathrin is a major protein component of the cytoplasmic face of intracellular organelles, called coated vesicles and coated pits. These specialized organelles are involved in the intracellular trafficking of

receptors and endocytosis of a variety of macromolecules. The basic subunit of the clathrin coat is composed of three heavy chains and three light chains. [provided by RefSeq]

**Other Designations:** clathrin heavy chain 1,clathrin, heavy polypeptide (Hc),clathrin, heavy polypeptide-like 2

### Interactome 1



### Interactome 2

