



# SZABO SCANDIC

Part of Europa Biosite

## Produktinformation



Forschungsprodukte & Biochemikalien



Zellkultur & Verbrauchsmaterial



Diagnostik & molekulare Diagnostik



Laborgeräte & Service

Weitere Information auf den folgenden Seiten!  
See the following pages for more information!



### Lieferung & Zahlungsart

siehe unsere [Liefer- und Versandbedingungen](#)

### Zuschläge

- Mindermengenzuschlag
- Trockeneiszuschlag
- Gefahrgutzuschlag
- Expressversand

### SZABO-SCANDIC HandelsgmbH

Quellenstraße 110, A-1100 Wien

T. +43(0)1 489 3961-0

F. +43(0)1 489 3961-7

[mail@szabo-scandic.com](mailto:mail@szabo-scandic.com)

[www.szabo-scandic.com](http://www.szabo-scandic.com)

[linkedin.com/company/szaboscandic](https://www.linkedin.com/company/szaboscandic) 

## OSM & COL4A6 Protein Protein Interaction Antibody Pair

Catalog # : DI0105

規格 : [ 1 Set ]

List All

### Specification

**Product Description:** This protein protein interaction antibody pair set comes with two antibodies to detect the protein-protein interaction, one against the OSM protein, and the other against the COL4A6 protein for use in *in situ* Proximity Ligation Assay. See Publication Reference below.

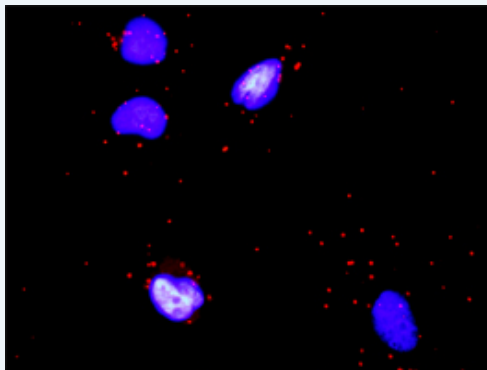
### Application Image

*In situ* Proximity Ligation Assay (Cell)



**Reactivity:** Human

**Quality Control Testing:** Protein protein interaction immunofluorescence result.



Representative image of Proximity Ligation Assay of protein-protein interactions between OSM and COL4A6. HeLa cells were stained with anti-OSM rabbit purified polyclonal antibody 1:1200 and anti-COL4A6 mouse monoclonal antibody 1:50. Each red dot represents the detection of protein-protein interaction complex. The images were analyzed using an optimized freeware ([BlobFinder](#)) download from The Centre for Image Analysis at Uppsala University.

**Supplied Product:** Antibody pair set content:  
 1. OSM rabbit purified polyclonal antibody (20 ug)  
 2. COL4A6 mouse monoclonal antibody (40 ug)  
 \*Reagents are sufficient for at least 30-50 assays using recommended protocols.

**Storage Instruction:** Store reagents of the antibody pair set at -20°C or lower. Please aliquot to avoid repeated freeze thaw cycle. Reagents should be returned to -

20°C storage immediately after use.

MSDS:

 [Download](#)

---

### Publication Reference

---

1. [An analysis of protein-protein interactions in cross-talk pathways reveals CRKL as a novel prognostic marker in hepatocellular carcinoma.](#)  
Liu CH, Chen TC, Chau GY, Jan YH, Chen CH, Hsu CN, Lin KT, Juang YL, Lu PJ, Cheng HC, Chen MH, Chang CF, Ting YS, Kao CY, Hsiao M, Huang CY. Mol Cell Proteomics. 2013 Feb 8. [Epub ahead of print]

---

### Applications

---

#### *In situ* Proximity Ligation Assay (Cell)

---

[COL4A6](#) [OSM](#)

---

### Gene Information

---

Entrez GeneID: [5008](#)

Gene Name: OSM

Gene Alias: MGC20461

Gene Description: oncostatin M

Omim ID: [165095](#)

Gene Ontology: [Hyperlink](#)

**Gene Summary:** Oncostatin M is a member of a cytokine family that includes leukemia-inhibitory factor, granulocyte colony-stimulating factor, and interleukin 6. This gene encodes a growth regulator which inhibits the proliferation of a number of tumor cell lines. It regulates cytokine production, including IL-6, G-CSF and GM-CSF from endothelial cells. [provided by RefSeq]

Other Designations: -

---

### Gene Information

---

Entrez GeneID: [1288](#)

Gene Name: COL4A6

Gene Alias: MGC88184

Gene Description: collagen, type IV, alpha 6

Omim ID: [303631](#), [308940](#)

Gene Ontology: [Hyperlink](#)

**Gene Summary:** This gene encodes one of the six subunits of type IV collagen, the major structural component of basement membranes. Like the other members of the type IV collagen gene family, this gene is organized in a head-to-head conformation with another type IV collagen gene, alpha 5 type IV collagen, so that the gene pair shares a common promoter. Deletions in the alpha 5 gene that extend into the alpha 6 gene result in diffuse leiomyomatosis accompanying the X-linked Alport syndrome caused by the deletion in the alpha 5 gene. Two splice variants have been identified for this gene. [provided by RefSeq]

**Other** OTTHUMP00000023834,OTTHUMP00000023835,collagen IV, alpha-6  
**Designations:** polypeptide,collagen alpha 6 type IV,collagen of basement membrane,  
alpha-6,dJ889N15.4 (Collagen Alpha 6(IV)),type IV alpha 6 collagen

### Interactome 1

---



### Interactome 2

---



[服務條款](#) | [隱私權政策](#) | [著作及商標](#) | [網站地圖](#)

©2016 亞諾法生技股份有限公司 Abnova Corporation. 版權所有.