



SZABO SCANDIC

Part of Europa Biosite

Produktinformation



Forschungsprodukte & Biochemikalien



Zellkultur & Verbrauchsmaterial



Diagnostik & molekulare Diagnostik



Laborgeräte & Service

Weitere Information auf den folgenden Seiten!
See the following pages for more information!



Lieferung & Zahlungsart

siehe unsere [Liefer- und Versandbedingungen](#)

Zuschläge

- Mindermengenzuschlag
- Trockeneiszuschlag
- Gefahrgutzuschlag
- Expressversand

SZABO-SCANDIC HandelsgmbH

Quellenstraße 110, A-1100 Wien

T. +43(0)1 489 3961-0

F. +43(0)1 489 3961-7

mail@szabo-scandic.com

www.szabo-scandic.com

[linkedin.com/company/szaboscandic](https://www.linkedin.com/company/szaboscandic) 

GRAP2 & CSF1R Protein Protein Interaction Antibody Pair

Catalog # : DI0107

規格 : [1 Set]

List All

Specification

Product Description: This protein protein interaction antibody pair set comes with two antibodies to detect the protein-protein interaction, one against the GRAP2 protein, and the other against the CSF1R protein for use in *in situ* Proximity Ligation Assay. See Publication Reference below.

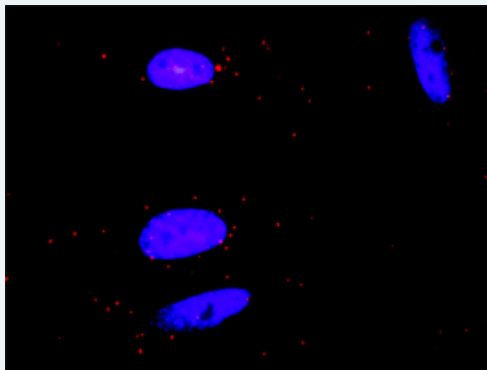
Application Image

In situ Proximity Ligation Assay (Cell)



Reactivity: Human

Quality Control Testing: Protein protein interaction immunofluorescence result.



Representative image of Proximity Ligation Assay of protein-protein interactions between GRAP2 and CSF1R. HeLa cells were stained with anti-GRAP2 rabbit purified polyclonal antibody 1:1200 and anti-CSF1R mouse monoclonal antibody 1:50. Each red dot represents the detection of protein-protein interaction complex. The images were analyzed using an optimized freeware ([BlobFinder](#)) download from The Centre for Image Analysis at Uppsala University.

Supplied Product: Antibody pair set content:
 1. GRAP2 rabbit purified polyclonal antibody (20 ug)
 2. CSF1R mouse monoclonal antibody (40 ug)
 *Reagents are sufficient for at least 30-50 assays using recommended protocols.

Storage Instruction: Store reagents of the antibody pair set at -20°C or lower. Please aliquot to avoid repeated freeze thaw cycle. Reagents should be returned to -

20°C storage immediately after use.

MSDS:  [Download](#)

Publication Reference

1. [An analysis of protein-protein interactions in cross-talk pathways reveals CRKL as a novel prognostic marker in hepatocellular carcinoma.](#)
Liu CH, Chen TC, Chau GY, Jan YH, Chen CH, Hsu CN, Lin KT, Juang YL, Lu PJ, Cheng HC, Chen MH, Chang CF, Ting YS, Kao CY, Hsiao M, Huang CY. Mol Cell Proteomics. 2013 Feb 8. [Epub ahead of print]

Applications

In situ Proximity Ligation Assay (Cell)

[CSF1R](#) [GRAP2](#)

Gene Information

Entrez GeneID: [9402](#)

Gene Name: GRAP2

Gene Alias: GADS,GRAP-2,GRB2L,GRBLG,GRID,GRPL,GrbX,Grf40,Mona,P38

Gene Description: GRB2-related adaptor protein 2

Omim ID: [604518](#)

Gene Ontology: [Hyperlink](#)

Gene Summary: This gene encodes a member of the GRB2/Sem5/Drk family. This member is an adaptor-like protein involved in leukocyte-specific protein-tyrosine kinase signaling. Like its related family member, GRB2-related adaptor protein (GRAP), this protein contains an SH2 domain flanked by two SH3 domains. This protein interacts with other proteins, such as GRB2-associated binding protein 1 (GAB1) and the SLP-76 leukocyte protein (LCP2), through its SH3 domains. Transcript variants utilizing alternative polyA sites exist. [provided by RefSeq]

Other Designations: GRB-2-like protein,GRB2-related protein with insert domain,OTTHUMP00000028837,SH3-SH2-SH3 adaptor molecule,growth factor receptor-binding protein,growth factor receptor-bound protein 2-related adaptor protein 2,hematopoietic cell-associated adaptor protei

Gene Information

Entrez GeneID: [1436](#)

Gene Name: CSF1R

Gene Alias: C-FMS,CD115,CSFR,FIM2,FMS

Gene Description: colony stimulating factor 1 receptor

Omim ID: [164770](#)

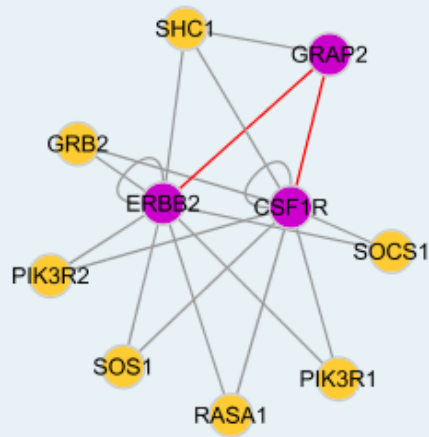
Gene Ontology: [Hyperlink](#)

Gene Summary: The protein encoded by this gene is the receptor for colony stimulating factor 1, a cytokine which controls the production, differentiation, and function of macrophages. This receptor mediates most if not all of the

biological effects of this cytokine. Ligand binding activates the receptor kinase through a process of oligomerization and transphosphorylation. The encoded protein is a tyrosine kinase transmembrane receptor and member of the CSF1/PDGF receptor family of tyrosine-protein kinases. Mutations in this gene have been associated with a predisposition to myeloid malignancy. The first intron of this gene contains a transcriptionally inactive ribosomal protein L7 processed pseudogene oriented in the opposite direction. [provided by RefSeq]

Other Designations: CD115 antigen, FMS proto-oncogene, McDonough feline sarcoma viral (v-fms) oncogene homolog, macrophage colony stimulating factor I receptor, soluble CSF1R variant 1

Interactome 1



Interactome 2

