



# SZABO SCANDIC

Part of Europa Biosite

## Produktinformation



Forschungsprodukte & Biochemikalien



Zellkultur & Verbrauchsmaterial



Diagnostik & molekulare Diagnostik



Laborgeräte & Service

Weitere Information auf den folgenden Seiten!  
See the following pages for more information!



### Lieferung & Zahlungsart

siehe unsere [Liefer- und Versandbedingungen](#)

### Zuschläge

- Mindermengenzuschlag
- Trockeneiszuschlag
- Gefahrgutzuschlag
- Expressversand

### SZABO-SCANDIC HandelsgmbH

Quellenstraße 110, A-1100 Wien

T. +43(0)1 489 3961-0

F. +43(0)1 489 3961-7

[mail@szabo-scandic.com](mailto:mail@szabo-scandic.com)

[www.szabo-scandic.com](http://www.szabo-scandic.com)

[linkedin.com/company/szaboscandic](https://www.linkedin.com/company/szaboscandic) 

## KIT & CSF2RA Protein Protein Interaction Antibody Pair

Catalog # : DI0108

規格 : [ 1 Set ]

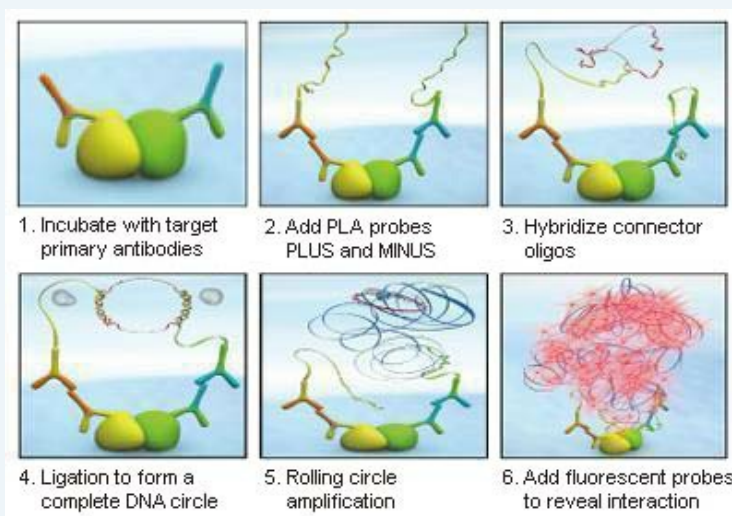
List All

### Specification

**Product Description:** This protein protein interaction antibody pair set comes with two antibodies to detect the protein-protein interaction, one against the KIT protein, and the other against the CSF2RA protein for use in *in situ* Proximity Ligation Assay. See Publication Reference below.

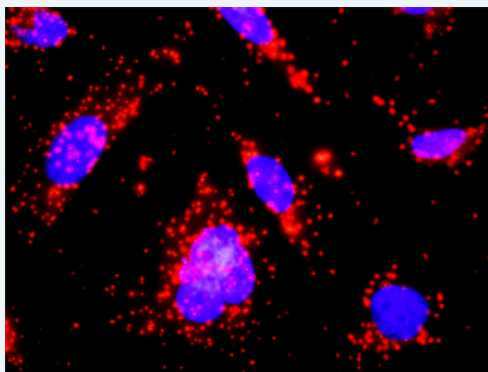
### Application Image

*In situ* Proximity Ligation Assay (Cell)



**Reactivity:** Human

**Quality Control Testing:** Protein protein interaction immunofluorescence result.



Representative image of Proximity Ligation Assay of protein-protein interactions between KIT and CSF2RA. HeLa cells were stained with anti-KIT rabbit purified polyclonal antibody 1:1200 and anti-CSF2RA mouse monoclonal antibody 1:50. Each red dot represents the detection of protein-protein interaction complex. The images were analyzed using an optimized freeware ([BlobFinder](#)) download from The Centre for Image Analysis at Uppsala University.

**Supplied Product:** Antibody pair set content:  
 1. KIT rabbit purified polyclonal antibody (20 ug)  
 2. CSF2RA mouse monoclonal antibody (40 ug)  
 \*Reagents are sufficient for at least 30-50 assays using recommended protocols.

**Storage Instruction:** Store reagents of the antibody pair set at -20°C or lower. Please aliquot to avoid repeated freeze thaw cycle. Reagents should be returned to -

20°C storage immediately after use.

MSDS:  [Download](#)

## Publication Reference

1. [An analysis of protein-protein interactions in cross-talk pathways reveals CRKL as a novel prognostic marker in hepatocellular carcinoma.](#)  
Liu CH, Chen TC, Chau GY, Jan YH, Chen CH, Hsu CN, Lin KT, Juang YL, Lu PJ, Cheng HC, Chen MH, Chang CF, Ting YS, Kao CY, Hsiao M, Huang CY. Mol Cell Proteomics. 2013 Feb 8. [Epub ahead of print]

## Applications

### *In situ* Proximity Ligation Assay (Cell)

[CSF2RA](#) [KIT](#)

## Gene Information

Entrez GeneID: [3815](#)

Gene Name: KIT

Gene Alias: C-Kit,CD117,PBT,SCFR

Gene Description: v-kit Hardy-Zuckerman 4 feline sarcoma viral oncogene homolog

Omim ID: [164920](#), [172800](#), [273300](#), [601626](#), [606764](#)

Gene Ontology: [Hyperlink](#)

**Gene Summary:** This gene encodes the human homolog of the proto-oncogene c-kit. C-kit was first identified as the cellular homolog of the feline sarcoma viral oncogene v-kit. This protein is a type 3 transmembrane receptor for MGF (mast cell growth factor, also known as stem cell factor). Mutations in this gene are associated with gastrointestinal stromal tumors, mast cell disease, acute myelogenous leukemia, and piebaldism. Multiple transcript variants encoding different isoforms have been found for this gene. [provided by RefSeq]

Other Designations: mast/stem cell growth factor receptor,proto-oncogene tyrosine-protein kinase Kit,soluble KIT variant 1

## Gene Information

Entrez GeneID: [1438](#)

Gene Name: CSF2RA

Gene Alias: CD116,CDw116,CSF2R,CSF2RAX,CSF2RAY,CSF2RX,CSF2RY,GM-CSF-R-alpha,GMCSFR,GMR,MGC3848,MGC4838

Gene Description: colony stimulating factor 2 receptor, alpha, low-affinity (granulocyte-macrophage)

Omim ID: [306250](#), [425000](#)

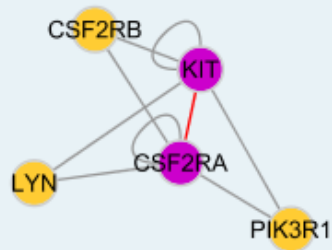
Gene Ontology: [Hyperlink](#)

**Gene Summary:** The protein encoded by this gene is the alpha subunit of the heterodimeric receptor for colony stimulating factor 2, a cytokine which controls the production, differentiation, and function of granulocytes and macrophages. The encoded protein is a member of the cytokine family of receptors. This gene is found in the pseudoautosomal region (PAR)

of the X and Y chromosomes. Multiple transcript variants encoding different isoforms have been found for this gene, with some of the isoforms being membrane-bound and others being soluble. [provided by RefSeq]

**Other Designations:** CD116 antigen,GM-CSF receptor alpha subunit,OTTHUMP00000014504,OTTHUMP00000014505,OTTHUMP0000014917,OTTHUMP00000014918,colony stimulating factor 2 receptor alpha chain,colony stimulating factor 2 receptor alpha subunit,granulocyte-macrophage colony-stimu

### Interactome 1



### Interactome 2

