



# SZABO SCANDIC

Part of Europa Biosite

## Produktinformation



Forschungsprodukte & Biochemikalien



Zellkultur & Verbrauchsmaterial



Diagnostik & molekulare Diagnostik



Laborgeräte & Service

Weitere Information auf den folgenden Seiten!  
See the following pages for more information!



### Lieferung & Zahlungsart

siehe unsere [Liefer- und Versandbedingungen](#)

### Zuschläge

- Mindermengenzuschlag
- Trockeneiszuschlag
- Gefahrgutzuschlag
- Expressversand

### SZABO-SCANDIC HandelsgmbH

Quellenstraße 110, A-1100 Wien

T. +43(0)1 489 3961-0

F. +43(0)1 489 3961-7

[mail@szabo-scandic.com](mailto:mail@szabo-scandic.com)

[www.szabo-scandic.com](http://www.szabo-scandic.com)

[linkedin.com/company/szaboscandic](https://www.linkedin.com/company/szaboscandic) 

## IKBKB & CSF2RA Protein Protein Interaction Antibody Pair

Catalog # : DI0109

規格 : [ 1 Set ]

List All

### Specification

**Product Description:** This protein protein interaction antibody pair set comes with two antibodies to detect the protein-protein interaction, one against the IKBKB protein, and the other against the CSF2RA protein for use in *in situ* Proximity Ligation Assay. See Publication Reference below.

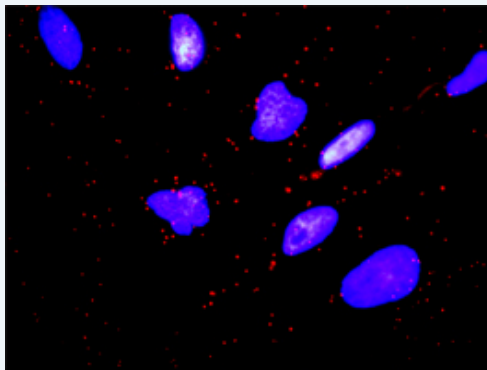
### Application Image

*In situ* Proximity Ligation Assay (Cell)



**Reactivity:** Human

**Quality Control Testing:** Protein protein interaction immunofluorescence result.



Representative image of Proximity Ligation Assay of protein-protein interactions between IKBKB and CSF2RA. HeLa cells were stained with anti-IKBKB rabbit purified polyclonal antibody 1:1200 and anti-CSF2RA mouse monoclonal antibody 1:50. Each red dot represents the detection of protein-protein interaction complex. The images were analyzed using an optimized freeware ([BlobFinder](#)) download from The Centre for Image Analysis at Uppsala University.

**Supplied Product:** Antibody pair set content:  
 1. IKBKB rabbit purified polyclonal antibody (20 ug)  
 2. CSF2RA mouse monoclonal antibody (40 ug)  
 \*Reagents are sufficient for at least 30-50 assays using recommended protocols.

**Storage Instruction:** Store reagents of the antibody pair set at -20°C or lower. Please aliquot to avoid repeated freeze thaw cycle. Reagents should be returned to -

20°C storage immediately after use.

MSDS:

 [Download](#)

### Publication Reference

1. [An analysis of protein-protein interactions in cross-talk pathways reveals CRKL as a novel prognostic marker in hepatocellular carcinoma.](#)  
Liu CH, Chen TC, Chau GY, Jan YH, Chen CH, Hsu CN, Lin KT, Juang YL, Lu PJ, Cheng HC, Chen MH, Chang CF, Ting YS, Kao CY, Hsiao M, Huang CY. Mol Cell Proteomics. 2013 Feb 8. [Epub ahead of print]

### Applications

#### *In situ* Proximity Ligation Assay (Cell)

[CSF2RA](#) [IKBKB](#)

### Gene Information

Entrez GeneID: [3551](#)

Gene Name: IKBKB

Gene Alias: FLJ40509,IKK-beta,IKK2,IKKB,MGC131801,NFKBIKB

Gene Description: inhibitor of kappa light polypeptide gene enhancer in B-cells, kinase beta

Omim ID: [603258](#)

Gene Ontology: [Hyperlink](#)

**Gene Summary:** NFKB1 (MIM 164011) or NFKB2 (MIM 164012) is bound to REL (MIM 164910), RELA (MIM 164014), or RELB (MIM 604758) to form the NFKB complex. The NFKB complex is inhibited by I-kappa-B proteins (NFKBIA, MIM 164008, or NFKBIB, MIM 604495), which inactivate NF-kappa-B by trapping it in the cytoplasm. Phosphorylation of serine residues on the I-kappa-B proteins by kinases (IKBKA, MIM 600664, or IKBKB) marks them for destruction via the ubiquitination pathway, thereby allowing activation of the NF-kappa-B complex. Activated NFKB complex translocates into the nucleus and binds DNA at kappa-B-binding motifs such as 5-prime GGGRNNYYCC 3-prime or 5-prime HGGARNYYCC 3-prime (where H is A, C, or T; R is an A or G purine; and Y is a C or T pyrimidine).[supplied by OMIM]

Other Designations: inhibitor of nuclear factor kappa B kinase beta subunit,nuclear factor NF-kappa-B inhibitor kinase beta

### Gene Information

Entrez GeneID: [1438](#)

Gene Name: CSF2RA

Gene Alias: CD116,CDw116,CSF2R,CSF2RAX,CSF2RAY,CSF2RX,CSF2RY,GM-CSF-R-alpha,GMCSFR,GMR,MGC3848,MGC4838

Gene Description: colony stimulating factor 2 receptor, alpha, low-affinity (granulocyte-macrophage)

Omim ID: [306250](#), [425000](#)

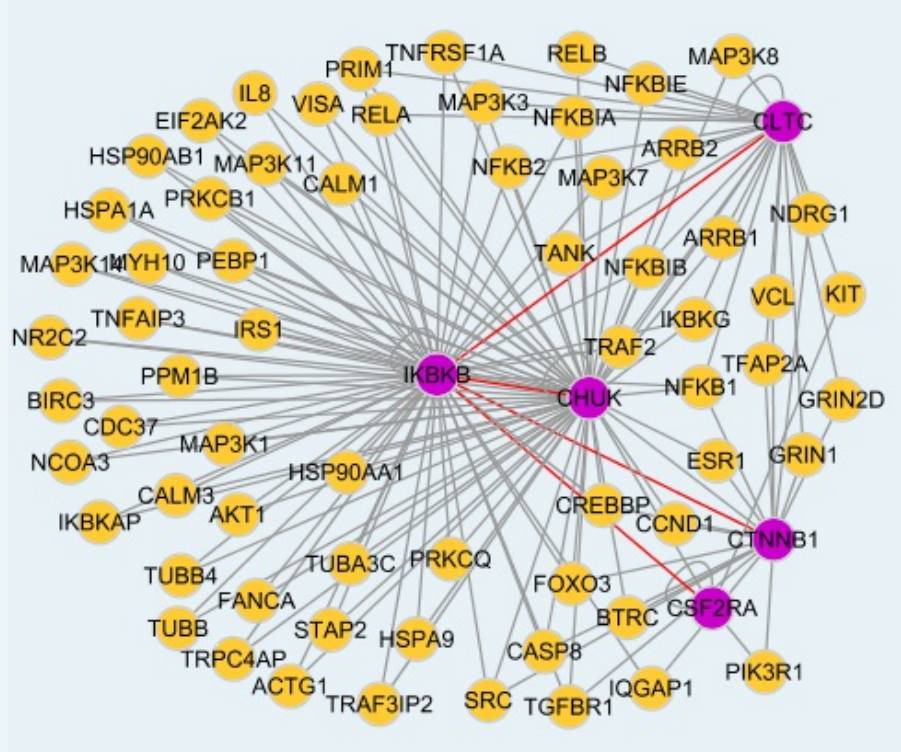
Gene Ontology: [Hyperlink](#)

**Gene Summary:** The protein encoded by this gene is the alpha subunit of the

heterodimeric receptor for colony stimulating factor 2, a cytokine which controls the production, differentiation, and function of granulocytes and macrophages. The encoded protein is a member of the cytokine family of receptors. This gene is found in the pseudoautosomal region (PAR) of the X and Y chromosomes. Multiple transcript variants encoding different isoforms have been found for this gene, with some of the isoforms being membrane-bound and others being soluble. [provided by RefSeq]

**Other Designations:** CD116 antigen,GM-CSF receptor alpha subunit,OTTHUMP00000014504,OTTHUMP00000014505,OTTHUMP0000014917,OTTHUMP00000014918,colony stimulating factor 2 receptor alpha chain,colony stimulating factor 2 receptor alpha subunit,granulocyte-macrophage colony-stimu

**Interactome 1**



**Interactome 2**

