



SZABO SCANDIC

Part of Europa Biosite

Produktinformation



Forschungsprodukte & Biochemikalien



Zellkultur & Verbrauchsmaterial



Diagnostik & molekulare Diagnostik



Laborgeräte & Service

Weitere Information auf den folgenden Seiten!
See the following pages for more information!



Lieferung & Zahlungsart

siehe unsere [Liefer- und Versandbedingungen](#)

Zuschläge

- Mindermengenzuschlag
- Trockeneiszuschlag
- Gefahrgutzuschlag
- Expressversand

SZABO-SCANDIC HandelsgmbH

Quellenstraße 110, A-1100 Wien

T. +43(0)1 489 3961-0

F. +43(0)1 489 3961-7

mail@szabo-scandic.com

www.szabo-scandic.com

[linkedin.com/company/szaboscandic](https://www.linkedin.com/company/szaboscandic) 

SKP1 & CTNNB1 Protein Protein Interaction Antibody Pair

Catalog # : DI0120

規格 : [1 Set]

List All

Specification

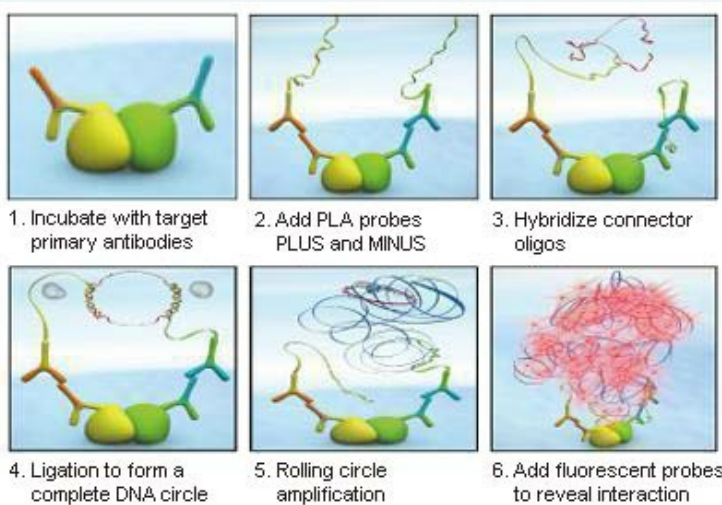
Product

Description:

This protein protein interaction antibody pair set comes with two antibodies to detect the protein-protein interaction, one against the SKP1 protein, and the other against the CTNNB1 protein for use in *in situ* Proximity Ligation Assay. See Publication Reference below.

Application Image

In situ Proximity Ligation Assay
(Cell)



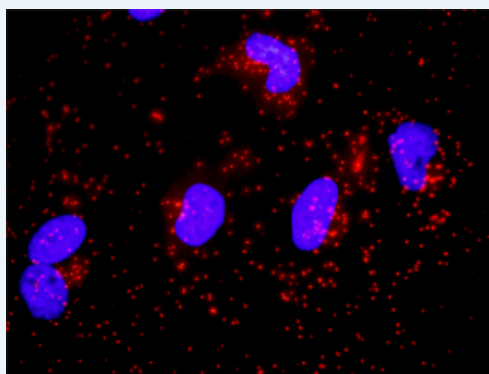
Reactivity:

Human

Quality Control

Protein protein interaction immunofluorescence result.

Testing:



Representative image of Proximity Ligation Assay of protein-protein interactions between SKP1 and CTNNB1. HeLa cells were stained with anti-SKP1 rabbit purified polyclonal antibody 1:1200 and anti-CTNNB1 mouse monoclonal antibody 1:50. Each red dot represents the detection of protein-protein interaction complex. The images were analyzed using an optimized freeware ([BlobFinder](#)) download from The Centre for Image Analysis at Uppsala University.

Supplied

Product:

Antibody pair set content:

1. SKP1 rabbit purified polyclonal antibody (20 ug)
2. CTNNB1 mouse monoclonal antibody (40 ug)

*Reagents are sufficient for at least 30-50 assays using recommended protocols.

Storage

Instruction:

Store reagents of the antibody pair set at -20°C or lower. Please aliquot to avoid repeated freeze thaw cycle. Reagents should be returned to -

MSDS:[Download](#)**Publication Reference**

1. An analysis of protein-protein interactions in cross-talk pathways reveals CRKL as a novel prognostic marker in hepatocellular carcinoma. Liu CH, Chen TC, Chau GY, Jan YH, Chen CH, Hsu CN, Lin KT, Juang YL, Lu PJ, Cheng HC, Chen MH, Chang CF, Ting YS, Kao CY, Hsiao M, Huang CY. Mol Cell Proteomics. 2013 Feb 8. [Epub ahead of print]

Applications***In situ* Proximity Ligation Assay (Cell)**CTNNB1 SKP1**Gene Information****Entrez GeneID:** 6500**Gene Name:** SKP1**Gene Alias:** EMC19,MGC34403,OCP-II,OCP2,SKP1A,TCEB1L,p19A**Gene Description:** S-phase kinase-associated protein 1**Omim ID:** 601434**Gene Ontology:** [Hyperlink](#)

Gene Summary: This gene encodes a component of SCF complexes, which are composed of this protein, cullin 1, a ring-box protein, and one member of the F-box family of proteins. This protein binds directly to the F-box motif found in F-box proteins. SCF complexes are involved in the regulated ubiquitination of specific protein substrates, which targets them for degradation by the proteasome. Specific F-box proteins recognize different target protein(s), and many specific SCF substrates have been identified including regulators of cell cycle progression and development. Studies have also characterized the protein as an RNA polymerase II elongation factor. Alternative splicing of this gene results in two transcript variants. A related pseudogene has been identified on chromosome 7. [provided by RefSeq]

Other Designations: RNA polymerase II elongation factor-like protein OCP2,cyclin A/CDK2-associated p19,organ of Corti protein 2,transcription elongation factor B (SIII), polypeptide 1-like

Gene Information**Entrez GeneID:** 1499**Gene Name:** CTNNB1**Gene Alias:** CTNNB,DKFZp686D02253,FLJ25606,FLJ37923**Gene Description:** catenin (cadherin-associated protein), beta 1, 88kDa**Omim ID:** 114550, 116806, 132600, 155255**Gene Ontology:** [Hyperlink](#)**Gene Summary:** Beta-catenin is an adherens junction protein. Adherens junctions (AJs;

Other Designations: OTTHUMP00000165222,OTTHUMP00000165223,catenin (cadherin-associated protein), beta 1 (88kD),catenin beta-1