



SZABO SCANDIC

Part of Europa Biosite

Produktinformation



Forschungsprodukte & Biochemikalien



Zellkultur & Verbrauchsmaterial



Diagnostik & molekulare Diagnostik



Laborgeräte & Service

Weitere Information auf den folgenden Seiten!
See the following pages for more information!



Lieferung & Zahlungsart

siehe unsere [Liefer- und Versandbedingungen](#)

Zuschläge

- Mindermengenzuschlag
- Trockeneiszuschlag
- Gefahrgutzuschlag
- Expressversand

SZABO-SCANDIC HandelsgmbH

Quellenstraße 110, A-1100 Wien

T. +43(0)1 489 3961-0

F. +43(0)1 489 3961-7

mail@szabo-scandic.com

www.szabo-scandic.com

[linkedin.com/company/szaboscandic](https://www.linkedin.com/company/szaboscandic) 

FYN & CTNNB1 Protein Protein Interaction Antibody Pair

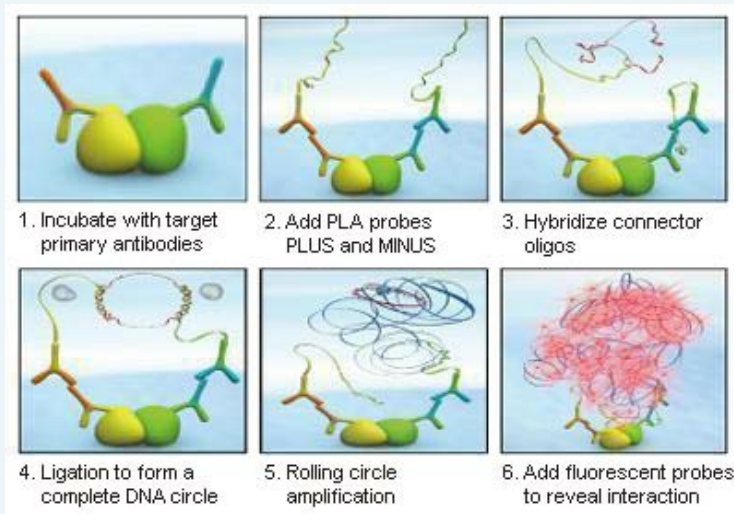
Catalog # : DI0125

規格 : [1 Set]

List All

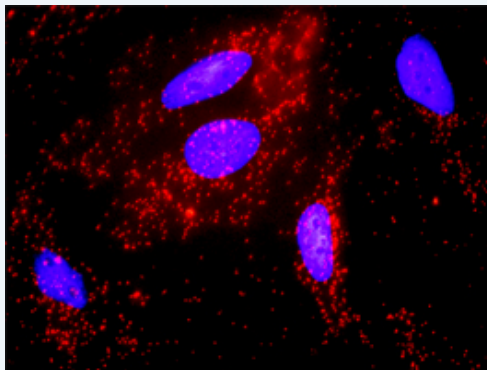
Specification

Product Description: This protein protein interaction antibody pair set comes with two antibodies to detect the protein-protein interaction, one against the FYN protein, and the other against the CTNNB1 protein for use in *in situ* Proximity Ligation Assay. See Publication Reference below.



Reactivity: Human

Quality Control Testing: Protein protein interaction immunofluorescence result.



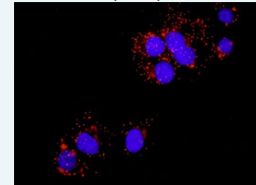
Representative image of Proximity Ligation Assay of protein-protein interactions between FYN and CTNNB1. HeLa cells were stained with anti-FYN rabbit purified polyclonal antibody 1:1200 and anti-CTNNB1 mouse monoclonal antibody 1:50. Each red dot represents the detection of protein-protein interaction complex. The images were analyzed using an optimized freeware ([BlobFinder](#)) download from The Centre for Image Analysis at Uppsala University.

Supplied Product: Antibody pair set content:
 1. FYN rabbit purified polyclonal antibody (20 ug)
 2. CTNNB1 mouse monoclonal antibody (40 ug)
 *Reagents are sufficient for at least 30-50 assays using recommended protocols.

Storage Instruction: Store reagents of the antibody pair set at -20°C or lower. Please aliquot to avoid repeated freeze thaw cycle. Reagents should be returned to -

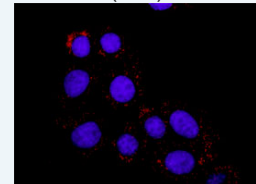
Application Image

In situ Proximity Ligation Assay (Cell)



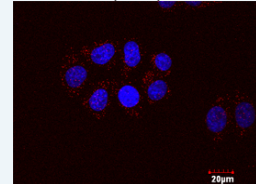
[enlarge](#)

In situ Proximity Ligation Assay (Cell)



[enlarge](#)

In situ Proximity Ligation Assay (Cell)



[enlarge](#)

20°C storage immediately after use.

MSDS:

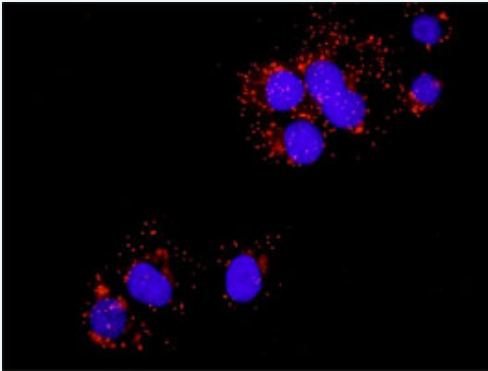
 [Download](#)

Publication Reference

1. [An analysis of protein-protein interactions in cross-talk pathways reveals CRKL as a novel prognostic marker in hepatocellular carcinoma.](#)
Liu CH, Chen TC, Chau GY, Jan YH, Chen CH, Hsu CN, Lin KT, Juang YL, Lu PJ, Cheng HC, Chen MH, Chang CF, Ting YS, Kao CY, Hsiao M, Huang CY. *Mol Cell Proteomics*. 2013 Feb 8. [Epub ahead of print]

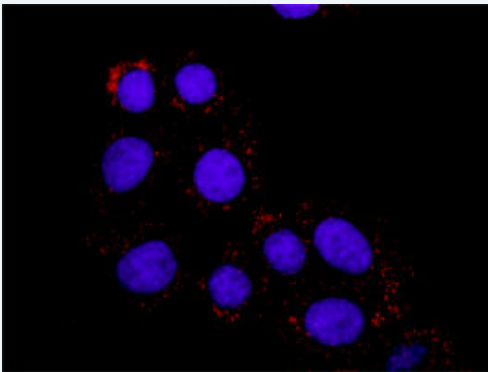
Applications

In situ Proximity Ligation Assay (Cell)



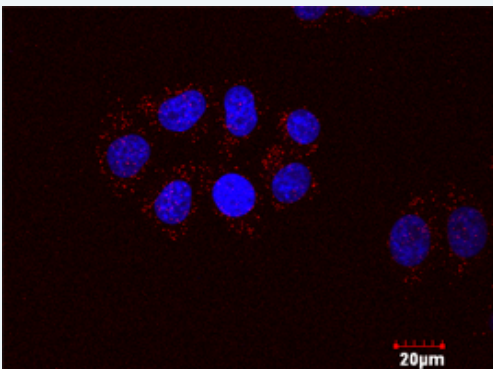
Representative image of Proximity Ligation Assay of protein-protein interactions between FYN and CTNNB1. A-549 cells were stained with anti-FYN rabbit purified polyclonal antibody 1:100 and anti-CTNNB1 mouse monoclonal antibody 1:50. Each red dot represents the detection of protein-protein interaction complex, and nuclei were counterstained with DAPI (blue).

In situ Proximity Ligation Assay (Cell)



Representative image of Proximity Ligation Assay of protein-protein interactions between FYN and CTNNB1. HT-29 cells were stained with anti-FYN rabbit purified polyclonal antibody 1:100 and anti-CTNNB1 mouse monoclonal antibody 1:50. Each red dot represents the detection of protein-protein interaction complex, and nuclei were counterstained with DAPI (blue).

In situ Proximity Ligation Assay (Cell)



Confocal microscopy image of Proximity Ligation Assay of protein-protein interactions between FYN and CTNNB1. HT-29 cells were stained with anti-FYN rabbit purified

polyclonal antibody 1:100 and anti-CTNNB1 mouse monoclonal antibody 1:50. Each red dot represents the detection of protein-protein interaction complex, and nuclei were counterstained with DAPI (blue).

[CTNNB1](#) [FYN](#)

Gene Information

Entrez GeneID: [2534](#)

Gene Name: FYN

Gene Alias: MGC45350,SLK,SYN

Gene Description: FYN oncogene related to SRC, FGR, YES

Omim ID: [137025](#)

Gene Ontology: [Hyperlink](#)

Gene Summary: This gene is a member of the protein-tyrosine kinase oncogene family. It encodes a membrane-associated tyrosine kinase that has been implicated in the control of cell growth. The protein associates with the p85 subunit of phosphatidylinositol 3-kinase and interacts with the fyn-binding protein. Alternatively spliced transcript variants encoding distinct isoforms exist. [provided by RefSeq]

Other Designations: OKT3-induced calcium influx regulator,OTTHUMP00000017914,OTTHUMP00000017915,OTTHUMP00000017917,c-syn protooncogene,protein-tyrosine kinase fyn,proto-oncogene tyrosine-protein kinase fyn,src-like kinase,src/yes-related novel,tyrosine kinase p59fyn(T)

Gene Information

Entrez GeneID: [1499](#)

Gene Name: CTNNB1

Gene Alias: CTNNB,DKFZp686D02253,FLJ25606,FLJ37923

Gene Description: catenin (cadherin-associated protein), beta 1, 88kDa

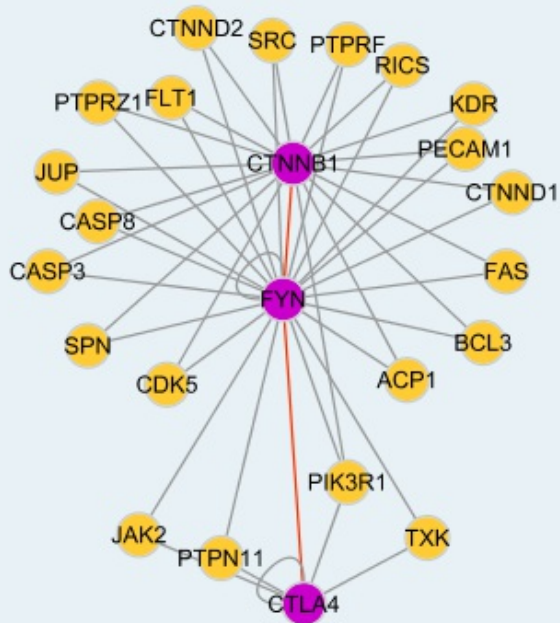
Omim ID: [114550](#), [116806](#), [132600](#), [155255](#)

Gene Ontology: [Hyperlink](#)

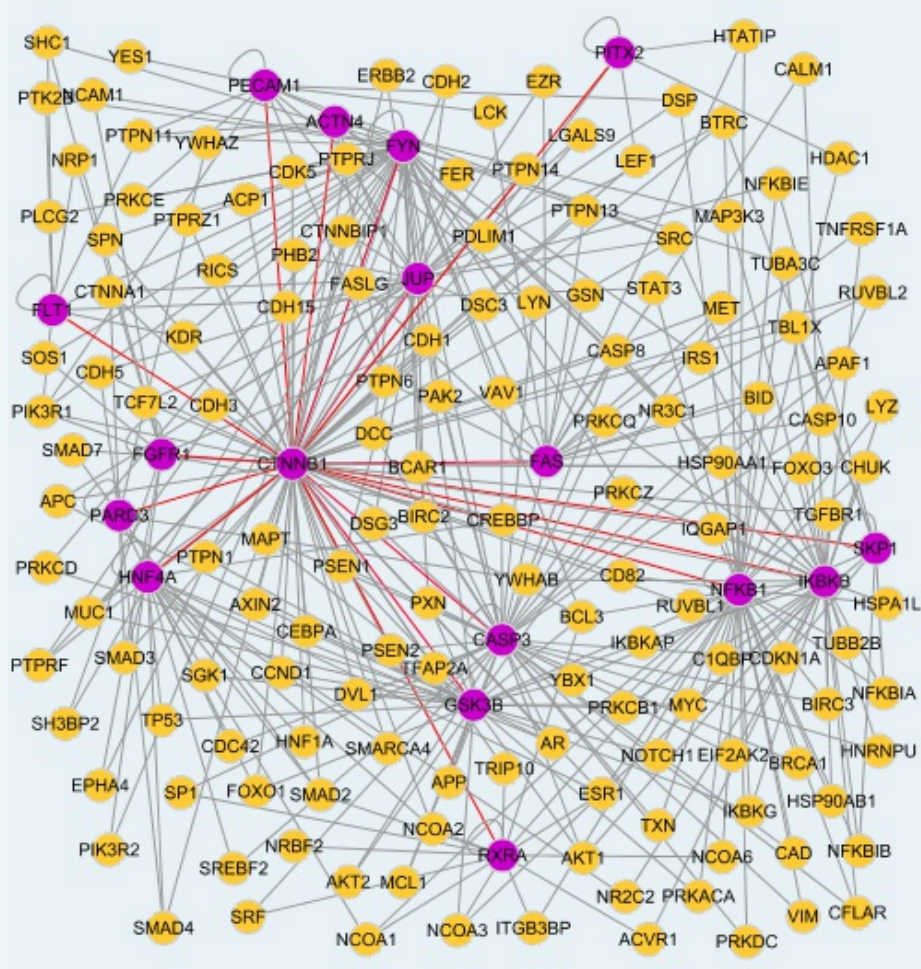
Gene Summary: Beta-catenin is an adherens junction protein. Adherens junctions (AJs; also called the zonula adherens) are critical for the establishment and maintenance of epithelial layers, such as those lining organ surfaces. AJs mediate adhesion between cells, communicate a signal that neighboring cells are present, and anchor the actin cytoskeleton. In serving these roles, AJs regulate normal cell growth and behavior. At several stages of embryogenesis, wound healing, and tumor cell metastasis, cells form and leave epithelia. This process, which involves the disruption and reestablishment of epithelial cell-cell contacts, may be regulated by the disassembly and assembly of AJs. AJs may also function in the transmission of the 'contact inhibition' signal, which instructs cells to stop dividing once an epithelial sheet is complete. [supplied by OMIM]

Other Designations: OTTHUMP00000165222,OTTHUMP00000165223,catenin (cadherin-associated protein), beta 1 (88kD),catenin beta-1

Interactome 1



Interactome 2



[服務條款](#) | [隱私權政策](#) | [著作及商標](#) | [網站地圖](#)

©2016 亞諾法生技股份有限公司 Abnova Corporation. 版權所有.