



# SZABO SCANDIC

Part of Europa Biosite

## Produktinformation



Forschungsprodukte & Biochemikalien



Zellkultur & Verbrauchsmaterial



Diagnostik & molekulare Diagnostik



Laborgeräte & Service

Weitere Information auf den folgenden Seiten!  
See the following pages for more information!



### Lieferung & Zahlungsart

siehe unsere [Liefer- und Versandbedingungen](#)

### Zuschläge

- Mindermengenzuschlag
- Trockeneiszuschlag
- Gefahrgutzuschlag
- Expressversand

### SZABO-SCANDIC HandelsgmbH

Quellenstraße 110, A-1100 Wien

T. +43(0)1 489 3961-0

F. +43(0)1 489 3961-7

[mail@szabo-scandic.com](mailto:mail@szabo-scandic.com)

[www.szabo-scandic.com](http://www.szabo-scandic.com)

[linkedin.com/company/szaboscandic](https://www.linkedin.com/company/szaboscandic) 

## BACE1 & CSNK1D Protein Protein Interaction Antibody Pair

Catalog # : DI0131

規格 : [ 1 Set ]

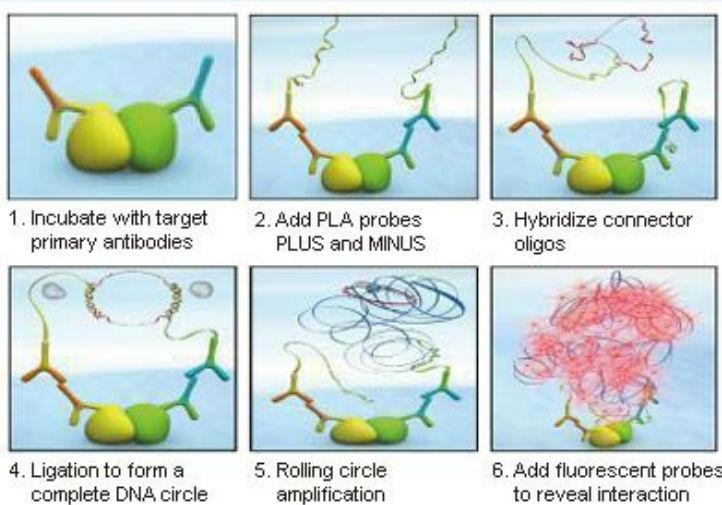
[List All](#)

### Specification

**Product Description:** This protein protein interaction antibody pair set comes with two antibodies to detect the protein-protein interaction, one against the BACE1 protein, and the other against the CSNK1D protein for use in *in situ* Proximity Ligation Assay. See Publication Reference below.

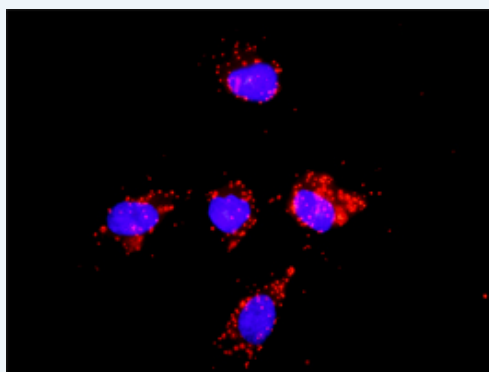
### Application Image

*In situ* Proximity Ligation Assay (Cell)



**Reactivity:** Human

**Quality Control Testing:** Protein protein interaction immunofluorescence result.



Representative image of Proximity Ligation Assay of protein-protein interactions between BACE1 and CSNK1D. HeLa cells were stained with anti-BACE1 rabbit purified polyclonal antibody 1:1200 and anti-CSNK1D mouse monoclonal antibody 1:50. Each red dot represents the detection of protein-protein interaction complex. The images were analyzed using an optimized freeware ([BlobFinder](#)) download from The Centre for Image Analysis at Uppsala University.

**Supplied Product:** Antibody pair set content:  
 1. BACE1 rabbit purified polyclonal antibody (20 ug)  
 2. CSNK1D mouse monoclonal antibody (40 ug)  
 \*Reagents are sufficient for at least 30-50 assays using recommended protocols.

**Storage Instruction:** Store reagents of the antibody pair set at -20°C or lower. Please aliquot to avoid repeated freeze thaw cycle. Reagents should be returned to -

MSDS:



### Publication Reference

1. An analysis of protein-protein interactions in cross-talk pathways reveals CRKL as a novel prognostic marker in hepatocellular carcinoma. Liu CH, Chen TC, Chau GY, Jan YH, Chen CH, Hsu CN, Lin KT, Juang YL, Lu PJ, Cheng HC, Chen MH, Chang CF, Ting YS, Kao CY, Hsiao M, Huang CY. Mol Cell Proteomics. 2013 Feb 8. [Epub ahead of print]

### Applications

#### *In situ* Proximity Ligation Assay (Cell)

[CSNK1D](#) [BACE1](#)

### Gene Information

Entrez GeneID: [23621](#)

Gene Name: BACE1

Gene Alias: ASP2,BACE,FLJ90568,HSPC104,KIAA1149

Gene Description: beta-site APP-cleaving enzyme 1

Omim ID: [604252](#)

Gene Ontology: [Hyperlink](#)

**Gene Summary:** Cerebral deposition of amyloid beta peptide is an early and critical feature of Alzheimer's disease. Amyloid beta peptide is generated by proteolytic cleavage of amyloid precursor protein (APP) by two proteases, one of which is the protein encoded by this gene. The encoded protein, a member of the peptidase A1 protein family, is a type I integral membrane glycoprotein and aspartic protease that is found mainly in the Golgi. Four transcript variants encoding different isoforms have been described for this gene. [provided by RefSeq]

**Other Designations:** APP beta-secretase,aspartyl protease 2,beta-secretase,beta-site amyloid beta A4 precursor protein-cleaving enzyme,beta-site amyloid precursor protein cleaving enzyme,memapsin-2,membrane-associated aspartic protease 2,transmembrane aspartic proteinase Asp2

### Gene Information

Entrez GeneID: [1453](#)

Gene Name: CSNK1D

Gene Alias: HCKID

Gene Description: casein kinase 1, delta

Omim ID: [600864](#)

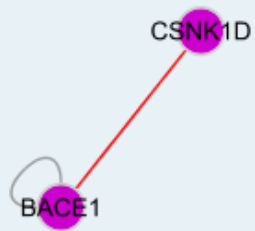
Gene Ontology: [Hyperlink](#)

**Gene Summary:** This gene is a member of the casein kinase I (CKI) gene family whose members have been implicated in the control of cytoplasmic and nuclear processes, including DNA replication and repair. The encoded protein is highly similar to the mouse and rat CK1 delta homologs. Two transcript

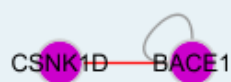
variants encoding different isoforms have been found for this gene.  
[provided by RefSeq]

Other -  
Designations:

#### Interactome 1



#### Interactome 2



[服務條款](#) | [隱私權政策](#) | [著作及商標](#) | [網站地圖](#)

©2016 亞諾法生技股份有限公司 Abnova Corporation. 版權所有.