



SZABO SCANDIC

Part of Europa Biosite

Produktinformation



Forschungsprodukte & Biochemikalien



Zellkultur & Verbrauchsmaterial



Diagnostik & molekulare Diagnostik



Laborgeräte & Service

Weitere Information auf den folgenden Seiten!
See the following pages for more information!



Lieferung & Zahlungsart

siehe unsere [Liefer- und Versandbedingungen](#)

Zuschläge

- Mindermengenzuschlag
- Trockeneiszuschlag
- Gefahrgutzuschlag
- Expressversand

SZABO-SCANDIC Handels GmbH

Quellenstraße 110, A-1100 Wien

T. +43(0)1 489 3961-0

F. +43(0)1 489 3961-7

mail@szabo-scandic.com

www.szabo-scandic.com

[linkedin.com/company/szaboscandic](https://www.linkedin.com/company/szaboscandic) 

JUP & CTNNA1 Protein Protein Interaction Antibody Pair

Catalog # : DI0140

規格 : [1 Set]

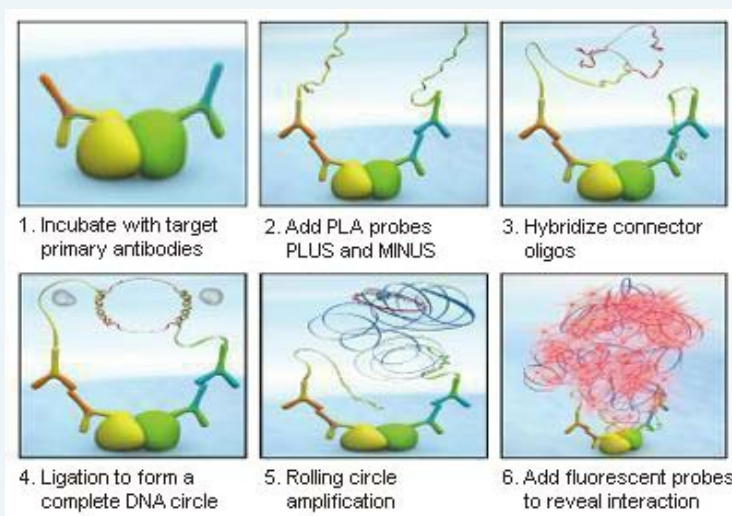
[List All](#)

Specification

Product Description: This protein protein interaction antibody pair set comes with two antibodies to detect the protein-protein interaction, one against the JUP protein, and the other against the CTNNA1 protein for use in *in situ* Proximity Ligation Assay. See Publication Reference below.

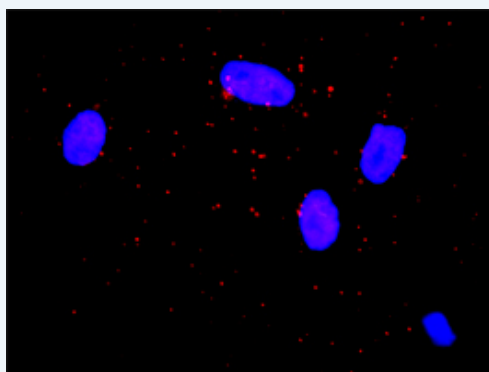
Application Image

In situ Proximity Ligation Assay (Cell)



Reactivity: Human

Quality Control Testing: Protein protein interaction immunofluorescence result.



Representative image of Proximity Ligation Assay of protein-protein interactions between JUP and CTNNA1. HeLa cells were stained with anti-JUP rabbit purified polyclonal antibody 1:1200 and anti-CTNNA1 mouse monoclonal antibody 1:50. Each red dot represents the detection of protein-protein interaction complex. The images were analyzed using an optimized freeware ([BlobFinder](#)) download from The Centre for Image Analysis at Uppsala University.

Supplied Product: Antibody pair set content:
 1. JUP rabbit purified polyclonal antibody (20 ug)
 2. CTNNA1 mouse monoclonal antibody (40 ug)
 *Reagents are sufficient for at least 30-50 assays using recommended protocols.

Storage Instruction: Store reagents of the antibody pair set at -20°C or lower. Please aliquot to avoid repeated freeze thaw cycle. Reagents should be returned to -

MSDS:[Download](#)**Publication Reference**

1. An analysis of protein-protein interactions in cross-talk pathways reveals CRKL as a novel prognostic marker in hepatocellular carcinoma. Liu CH, Chen TC, Chau GY, Jan YH, Chen CH, Hsu CN, Lin KT, Juang YL, Lu PJ, Cheng HC, Chen MH, Chang CF, Ting YS, Kao CY, Hsiao M, Huang CY. Mol Cell Proteomics. 2013 Feb 8. [Epub ahead of print]

Applications***In situ* Proximity Ligation Assay (Cell)**CTNNA1 JUP**Gene Information****Entrez GeneID:** 3728**Gene Name:** JUP**Gene Alias:** ARVD12,CTNNG,DP3,DPIII,PDGB,PKGB**Gene Description:** junction plakoglobin**Omim ID:** 173325, 601214**Gene Ontology:** [Hyperlink](#)

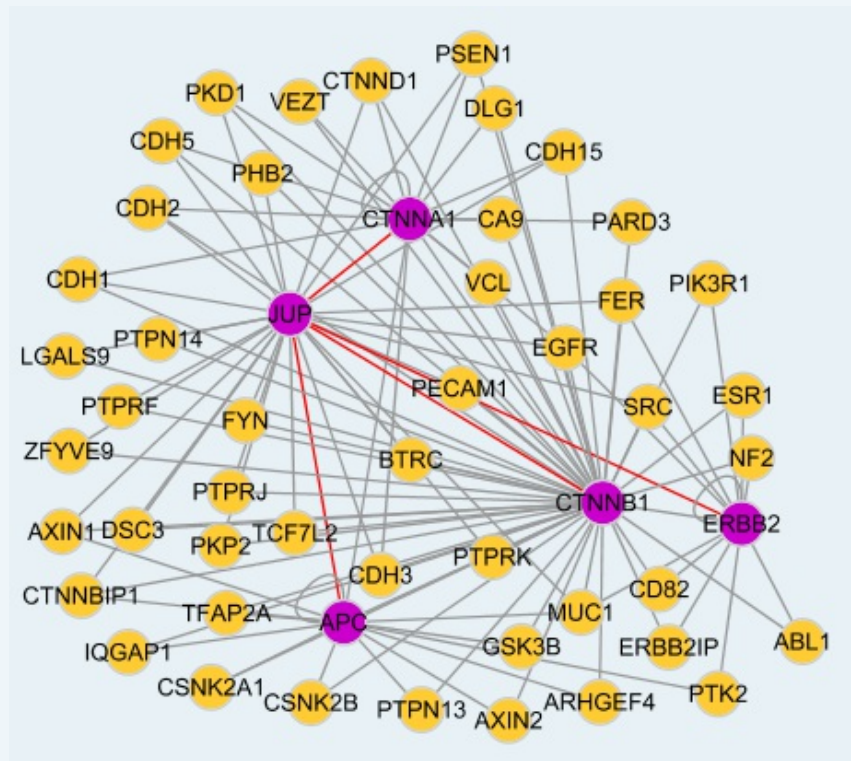
Gene Summary: This gene encodes a major cytoplasmic protein which is the only known constituent common to submembranous plaques of both desmosomes and intermediate junctions. This protein forms distinct complexes with cadherins and desmosomal cadherins and is a member of the catenin family since it contains a distinct repeating amino acid motif called the armadillo repeat. Mutation in this gene has been associated with Naxos disease. Alternative splicing occurs in this gene; however, not all transcripts have been fully described. [provided by RefSeq]

Other Designations: OTTHUMP00000164735,catenin (cadherin-associated protein), gamma (80kD),catenin (cadherin-associated protein), gamma 80kDa,gamma-catenin

Gene Information**Entrez GeneID:** 1495**Gene Name:** CTNNA1**Gene Alias:** CAP102,FLJ36832**Gene Description:** catenin (cadherin-associated protein), alpha 1, 102kDa**Omim ID:** 116805**Gene Ontology:** [Hyperlink](#)

Other Designations: alpha-E-catenin,alpha-catenin,alphaE-catenin,cadherin-associated protein,102kDa,catenin (cadherin-associated protein), alpha 1 (102kD),catenin, alpha 1

Interactome 1



Interactome 2

