



SZABO SCANDIC

Part of Europa Biosite

Produktinformation



Forschungsprodukte & Biochemikalien



Zellkultur & Verbrauchsmaterial



Diagnostik & molekulare Diagnostik



Laborgeräte & Service

Weitere Information auf den folgenden Seiten!
See the following pages for more information!



Lieferung & Zahlungsart

siehe unsere [Liefer- und Versandbedingungen](#)

Zuschläge

- Mindermengenzuschlag
- Trockeneiszuschlag
- Gefahrgutzuschlag
- Expressversand

SZABO-SCANDIC HandelsgmbH

Quellenstraße 110, A-1100 Wien

T. +43(0)1 489 3961-0

F. +43(0)1 489 3961-7

mail@szabo-scandic.com

www.szabo-scandic.com

[linkedin.com/company/szaboscandic](https://www.linkedin.com/company/szaboscandic) 

ACTN1 & CTNNA1 Protein Protein Interaction Antibody Pair

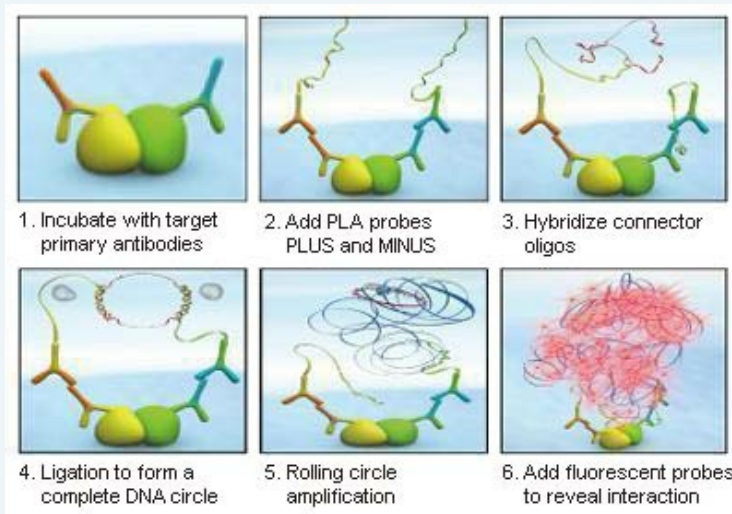
產品編號 #: DI0141

規格 : [1 Set]

List All

Specification

Product Description: This protein protein interaction antibody pair set comes with two antibodies to detect the protein-protein interaction, one against the ACTN1 protein, and the other against the CTNNA1 protein for use in *in situ* Proximity Ligation Assay. See Publication Reference below.

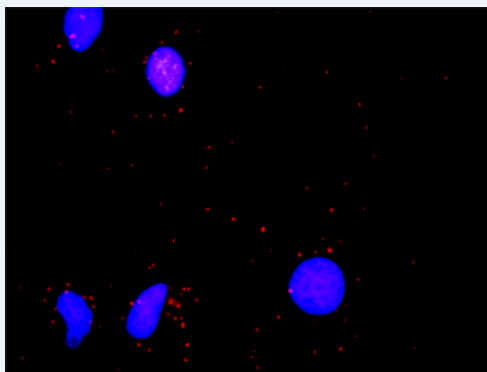


Application Image

In situ Proximity Ligation Assay (Cell)

Reactivity: Human

Quality Control Testing: Protein protein interaction immunofluorescence result.



Representative image of Proximity Ligation Assay of protein-protein interactions between ACTN1 and CTNNA1. HeLa cells were stained with anti-ACTN1 rabbit purified polyclonal antibody 1:1200 and anti-CTNNA1 mouse monoclonal antibody 1:50. Each red dot represents the detection of protein-protein interaction complex. The images were analyzed using an optimized freeware ([BlobFinder](#)) download from The Centre for Image Analysis at Uppsala University.

Supplied Product: Antibody pair set content:
 1. ACTN1 rabbit purified polyclonal antibody (20 ug)
 2. CTNNA1 mouse monoclonal antibody (40 ug)
 *Reagents are sufficient for at least 30-50 assays using recommended protocols.

Storage Instruction: Store reagents of the antibody pair set at -20°C or lower. Please aliquot to avoid repeated freeze thaw cycle. Reagents should be returned to -

20°C storage immediately after use.

MSDS:  [Download](#)

Publication Reference

1. [An analysis of protein-protein interactions in cross-talk pathways reveals CRKL as a novel prognostic marker in hepatocellular carcinoma.](#)
Liu CH, Chen TC, Chau GY, Jan YH, Chen CH, Hsu CN, Lin KT, Juang YL, Lu PJ, Cheng HC, Chen MH, Chang CF, Ting YS, Kao CY, Hsiao M, Huang CY. Mol Cell Proteomics. 2013 Feb 8. [Epub ahead of print]

Applications

In situ Proximity Ligation Assay (Cell)

[ACTN1](#) [CTNNA1](#)

Gene Information

Entrez GeneID: [87](#)

Gene Name: ACTN1

Gene Alias: FLJ40884

Gene Description: actinin, alpha 1

Omim ID: [102575](#)

Gene Ontology: [Hyperlink](#)

Gene Summary: Alpha actinins belong to the spectrin gene superfamily which represents a diverse group of cytoskeletal proteins, including the alpha and beta spectrins and dystrophins. Alpha actinin is an actin-binding protein with multiple roles in different cell types. In nonmuscle cells, the cytoskeletal isoform is found along microfilament bundles and adherens-type junctions, where it is involved in binding actin to the membrane. In contrast, skeletal, cardiac, and smooth muscle isoforms are localized to the Z-disc and analogous dense bodies, where they help anchor the myofibrillar actin filaments. This gene encodes a nonmuscle, cytoskeletal, alpha actinin isoform and maps to the same site as the structurally similar erythroid beta spectrin gene. Three transcript variants encoding different isoforms have been found for this gene. [provided by RefSeq]

Other Designations: F-actin cross-linking protein,actinin 1 smooth muscle,alpha-actinin 1

Gene Information

Entrez GeneID: [1495](#)

Gene Name: CTNNA1

Gene Alias: CAP102,FLJ36832

Gene Description: catenin (cadherin-associated protein), alpha 1, 102kDa

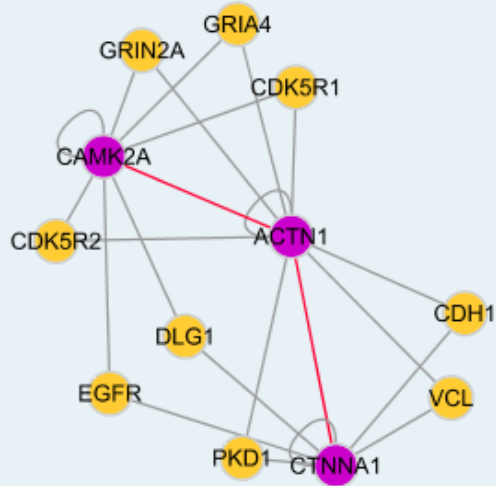
Omim ID: [116805](#)

Gene Ontology: [Hyperlink](#)

Other Designations: alpha-E-catenin,alpha-catenin,alphaE-catenin,cadherin-associated

Designations: protein,102kDa,catenin (cadherin-associated protein), alpha 1 (102kD),catenin, alpha 1

Interactome 1



Interactome 2

