



# SZABO SCANDIC

Part of Europa Biosite

## Produktinformation



Forschungsprodukte & Biochemikalien



Zellkultur & Verbrauchsmaterial



Diagnostik & molekulare Diagnostik



Laborgeräte & Service

Weitere Information auf den folgenden Seiten!  
See the following pages for more information!



### Lieferung & Zahlungsart

siehe unsere [Liefer- und Versandbedingungen](#)

### Zuschläge

- Mindermengenzuschlag
- Trockeneiszuschlag
- Gefahrgutzuschlag
- Expressversand

### SZABO-SCANDIC HandelsgmbH

Quellenstraße 110, A-1100 Wien

T. +43(0)1 489 3961-0

F. +43(0)1 489 3961-7

[mail@szabo-scandic.com](mailto:mail@szabo-scandic.com)

[www.szabo-scandic.com](http://www.szabo-scandic.com)

[linkedin.com/company/szaboscandic](https://www.linkedin.com/company/szaboscandic) 

## LCK & DLG1 Protein Protein Interaction Antibody Pair

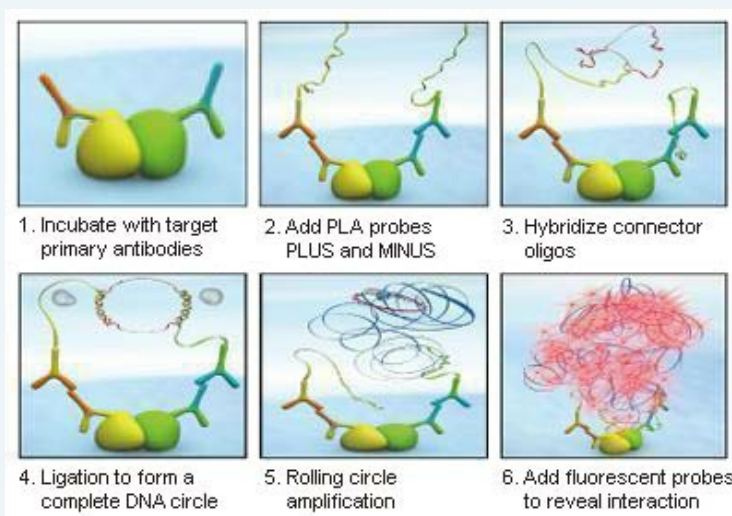
Catalog # : DI0150

規格 : [ 1 Set ]

List All

### Specification

**Product Description:** This protein protein interaction antibody pair set comes with two antibodies to detect the protein-protein interaction, one against the LCK protein, and the other against the DLG1 protein for use in *in situ* Proximity Ligation Assay. See Publication Reference below.

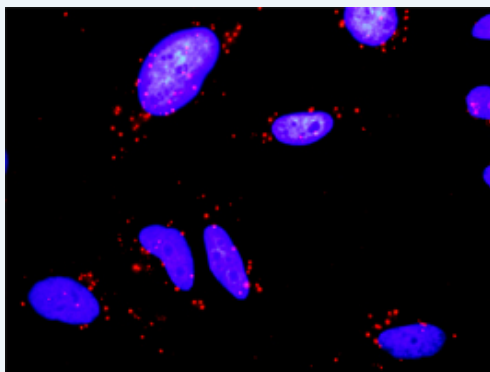


### Application Image

*In situ* Proximity Ligation Assay (Cell)

**Reactivity:** Human

**Quality Control Testing:** Protein protein interaction immunofluorescence result.




Representative image of Proximity Ligation Assay of protein-protein interactions between LCK and DLG1. HeLa cells were stained with anti-LCK rabbit purified polyclonal antibody 1:1200 and anti-DLG1 mouse monoclonal antibody 1:50. Each red dot represents the detection of protein-protein interaction complex. The images were analyzed using an optimized freeware ([BlobFinder](#)) download from The Centre for Image Analysis at Uppsala University.

**Supplied Product:** Antibody pair set content:  
 1. LCK rabbit purified polyclonal antibody (20 ug)  
 2. DLG1 mouse monoclonal antibody (40 ug)  
 \*Reagents are sufficient for at least 30-50 assays using recommended protocols.

**Storage Instruction:** Store reagents of the antibody pair set at -20°C or lower. Please aliquot to avoid repeated freeze thaw cycle. Reagents should be returned to -

20°C storage immediately after use.

MSDS:

 [Download](#)

## Publication Reference

1. [An analysis of protein-protein interactions in cross-talk pathways reveals CRKL as a novel prognostic marker in hepatocellular carcinoma.](#)  
Liu CH, Chen TC, Chau GY, Jan YH, Chen CH, Hsu CN, Lin KT, Juang YL, Lu PJ, Cheng HC, Chen MH, Chang CF, Ting YS, Kao CY, Hsiao M, Huang CY. Mol Cell Proteomics. 2013 Feb 8. [Epub ahead of print]

## Applications

### *In situ* Proximity Ligation Assay (Cell)

[DLG1](#) [LCK](#)

## Gene Information

Entrez GeneID: [3932](#)

Gene Name: LCK

Gene Alias: YT16,p56lck,pp58lck

Gene Description: lymphocyte-specific protein tyrosine kinase

Omim ID: [153390](#)

Gene Ontology: [Hyperlink](#)

**Gene Summary:** This gene is a member of the Src family of protein tyrosine kinases (PTKs). The encoded protein is a key signaling molecule in the selection and maturation of developing T-cells. It contains N-terminal sites for myristylation and palmitoylation, a PTK domain, and SH2 and SH3 domains which are involved in mediating protein-protein interactions with phosphotyrosine-containing and proline-rich motifs, respectively. The protein localizes to the plasma membrane and pericentrosomal vesicles, and binds to cell surface receptors, including CD4 and CD8, and other signaling molecules. Multiple alternatively spliced variants, encoding the same protein, have been described. [provided by RefSeq]

**Other Designations:** T-lymphocyte specific protein tyrosine kinase p56lck,p56(LSTRA) protein-tyrosine kinase,protein tyrosine kinase,proto-oncogene tyrosine-protein kinase LCK

## Gene Information

Entrez GeneID: [1739](#)

Gene Name: DLG1

Gene Alias: DKFZp761P0818,DKFZp781B0426,DLGH1,SAP-97,SAP97,dJ1061C18.1.1,hdlg

Gene Description: discs, large homolog 1 (Drosophila)

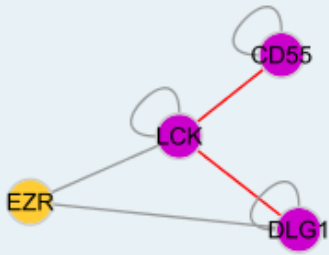
Omim ID: [601014](#)

Gene Ontology: [Hyperlink](#)

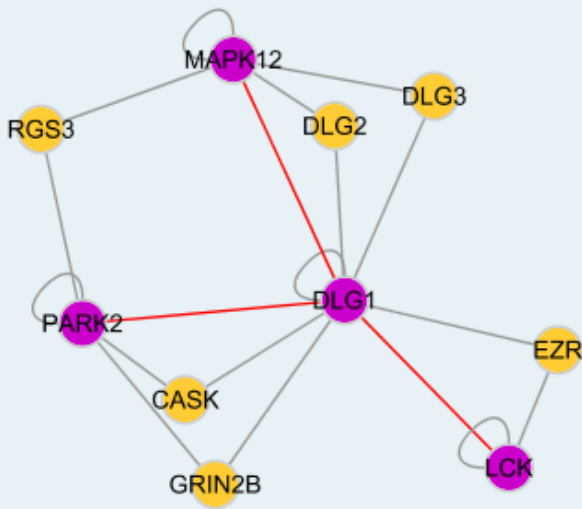
**Other** OTTHUMP00000165202,discs large homolog 1,discs, large homolog

Designations: 1,presynaptic protein SAP97,synapse-associated protein 97

### Interactome 1



### Interactome 2



[服務條款](#) | [隱私權政策](#) | [著作及商標](#) | [網站地圖](#)

©2016 亞諾法生技股份有限公司 Abnova Corporation. 版權所有.