



# SZABO SCANDIC

Part of Europa Biosite

## Produktinformation



Forschungsprodukte & Biochemikalien



Zellkultur & Verbrauchsmaterial



Diagnostik & molekulare Diagnostik



Laborgeräte & Service

Weitere Information auf den folgenden Seiten!  
See the following pages for more information!



### Lieferung & Zahlungsart

siehe unsere [Liefer- und Versandbedingungen](#)

### Zuschläge

- Mindermengenzuschlag
- Trockeneiszuschlag
- Gefahrgutzuschlag
- Expressversand

### SZABO-SCANDIC HandelsgmbH

Quellenstraße 110, A-1100 Wien

T. +43(0)1 489 3961-0

F. +43(0)1 489 3961-7

[mail@szabo-scandic.com](mailto:mail@szabo-scandic.com)

[www.szabo-scandic.com](http://www.szabo-scandic.com)

[linkedin.com/company/szaboscandic](https://www.linkedin.com/company/szaboscandic) 

## PARK2 & DLG1 Protein Protein Interaction Antibody Pair

Catalog # : DI0151

規格 : [ 1 Set ]

List All

### Specification

**Product Description:** This protein protein interaction antibody pair set comes with two antibodies to detect the protein-protein interaction, one against the PARK2 protein, and the other against the DLG1 protein for use in *in situ* Proximity Ligation Assay. See Publication Reference below.

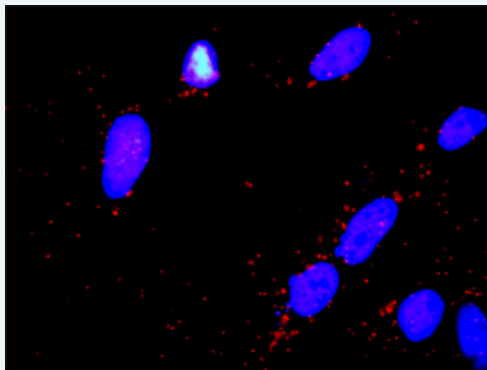
### Application Image

*In situ* Proximity Ligation Assay (Cell)



**Reactivity:** Human

**Quality Control Testing:** Protein protein interaction immunofluorescence result.



Representative image of Proximity Ligation Assay of protein-protein interactions between PARK2 and DLG1. HeLa cells were stained with anti-PARK2 rabbit purified polyclonal antibody 1:1200 and anti-DLG1 mouse monoclonal antibody 1:50. Each red dot represents the detection of protein-protein interaction complex. The images were analyzed using an optimized freeware ([BlobFinder](#)) download from The Centre for Image Analysis at Uppsala University.

**Supplied Product:** Antibody pair set content:  
 1. PARK2 rabbit purified polyclonal antibody (20 ug)  
 2. DLG1 mouse monoclonal antibody (40 ug)  
 \*Reagents are sufficient for at least 30-50 assays using recommended protocols.

**Storage Instruction:** Store reagents of the antibody pair set at -20°C or lower. Please aliquot to avoid repeated freeze thaw cycle. Reagents should be returned to -

20°C storage immediately after use.

MSDS:  [Download](#)

## Publication Reference

1. [An analysis of protein-protein interactions in cross-talk pathways reveals CRKL as a novel prognostic marker in hepatocellular carcinoma.](#)  
Liu CH, Chen TC, Chau GY, Jan YH, Chen CH, Hsu CN, Lin KT, Juang YL, Lu PJ, Cheng HC, Chen MH, Chang CF, Ting YS, Kao CY, Hsiao M, Huang CY. Mol Cell Proteomics. 2013 Feb 8. [Epub ahead of print]

## Applications

### *In situ* Proximity Ligation Assay (Cell)

[DLG1](#) [PARK2](#)

## Gene Information

Entrez GeneID: [5071](#)

Gene Name: PARK2

Gene Alias: AR-JP,LPRS2,PDJ,PRKN

Gene Description: Parkinson disease (autosomal recessive, juvenile) 2, parkin

Omim ID: [211980](#), [600116](#), [602544](#), [604370](#), [607572](#)

Gene Ontology: [Hyperlink](#)

**Gene Summary:** The precise function of this gene is unknown; however, the encoded protein is a component of a multiprotein E3 ubiquitin ligase complex that mediates the targeting of substrate proteins for proteasomal degradation. Mutations in this gene are known to cause Parkinson disease and autosomal recessive juvenile Parkinson disease. Alternative splicing of this gene produces multiple transcript variants encoding distinct isoforms. Additional splice variants of this gene have been described but currently lack transcript support. [provided by RefSeq]

Other Designations: E3 ubiquitin ligase,OTTHUMP00000017565,OTTHUMP00000017566,OTTHUMP000017567,parkin,parkin 2

## Gene Information

Entrez GeneID: [1739](#)

Gene Name: DLG1

Gene Alias: DKFZp761P0818,DKFZp781B0426,DLGH1,SAP-97,SAP97,dJ1061C18.1.1,hdlg

Gene Description: discs, large homolog 1 (Drosophila)

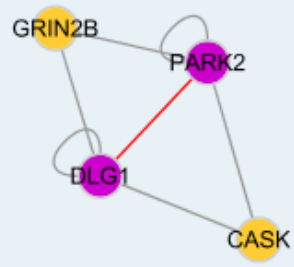
Omim ID: [601014](#)

Gene Ontology: [Hyperlink](#)

Other Designations: OTTHUMP00000165202,disks large homolog 1,disks, large homolog 1,presynaptic protein SAP97,synapse-associated protein 97

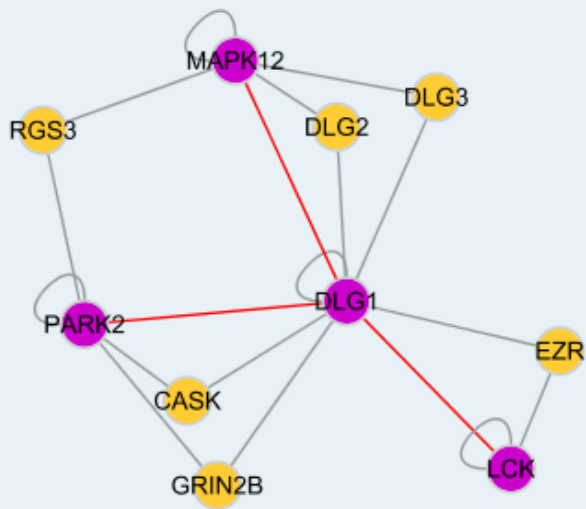
## Interactome 1

---



## Interactome 2

---



[服務條款](#) | [隱私權政策](#) | [著作及商標](#) | [網站地圖](#)

©2016 亞諾法生技股份有限公司 Abnova Corporation. 版權所有.