



# SZABO SCANDIC

Part of Europa Biosite

## Produktinformation



Forschungsprodukte & Biochemikalien



Zellkultur & Verbrauchsmaterial



Diagnostik & molekulare Diagnostik



Laborgeräte & Service

Weitere Information auf den folgenden Seiten!  
See the following pages for more information!



### Lieferung & Zahlungsart

siehe unsere [Liefer- und Versandbedingungen](#)

### Zuschläge

- Mindermengenzuschlag
- Trockeneiszuschlag
- Gefahrgutzuschlag
- Expressversand

### SZABO-SCANDIC HandelsgmbH

Quellenstraße 110, A-1100 Wien

T. +43(0)1 489 3961-0

F. +43(0)1 489 3961-7

[mail@szabo-scandic.com](mailto:mail@szabo-scandic.com)

[www.szabo-scandic.com](http://www.szabo-scandic.com)

[linkedin.com/company/szaboscandic](https://www.linkedin.com/company/szaboscandic) 

## CD247 & DOCK2 Protein Protein Interaction Antibody Pair

Catalog # : DI0153

規格 : [ 1 Set ]

List All

### Specification

**Product Description:** This protein protein interaction antibody pair set comes with two antibodies to detect the protein-protein interaction, one against the CD247 protein, and the other against the DOCK2 protein for use in *in situ* Proximity Ligation Assay. See Publication Reference below.

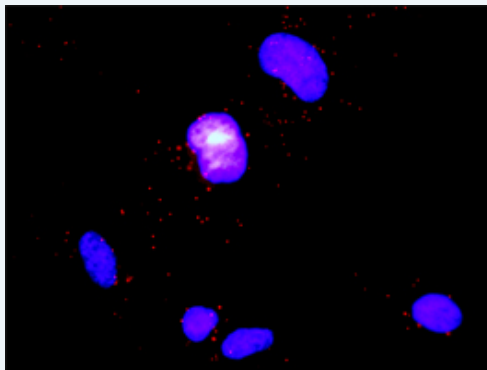
### Application Image

*In situ* Proximity Ligation Assay (Cell)



**Reactivity:** Human

**Quality Control Testing:** Protein protein interaction immunofluorescence result.



Representative image of Proximity Ligation Assay of protein-protein interactions between CD247 and DOCK2. HeLa cells were stained with anti-CD247 rabbit purified polyclonal antibody 1:1200 and anti-DOCK2 mouse monoclonal antibody 1:50. Each red dot represents the detection of protein-protein interaction complex. The images were analyzed using an optimized freeware ([BlobFinder](#)) download from The Centre for Image Analysis at Uppsala University.

**Supplied Product:** Antibody pair set content:  
 1. CD247 rabbit purified polyclonal antibody (20 ug)  
 2. DOCK2 mouse monoclonal antibody (40 ug)  
 \*Reagents are sufficient for at least 30-50 assays using recommended protocols.

**Storage Instruction:** Store reagents of the antibody pair set at -20°C or lower. Please aliquot to avoid repeated freeze thaw cycle. Reagents should be returned to -

20°C storage immediately after use.

MSDS:

 [Download](#)

## Publication Reference

1. [An analysis of protein-protein interactions in cross-talk pathways reveals CRKL as a novel prognostic marker in hepatocellular carcinoma.](#)  
Liu CH, Chen TC, Chau GY, Jan YH, Chen CH, Hsu CN, Lin KT, Juang YL, Lu PJ, Cheng HC, Chen MH, Chang CF, Ting YS, Kao CY, Hsiao M, Huang CY. Mol Cell Proteomics. 2013 Feb 8. [Epub ahead of print]

## Applications

### *In situ* Proximity Ligation Assay (Cell)

[CD247](#) [DOCK2](#)

## Gene Information

Entrez GeneID: [919](#)

Gene Name: CD247

Gene Alias: CD3-ZETA,CD3H,CD3Q,CD3Z,T3Z,TCRZ

Gene Description: CD247 molecule

Omim ID: [186780](#), [610163](#)

Gene Ontology: [Hyperlink](#)

**Gene Summary:** The protein encoded by this gene is T-cell receptor zeta, which together with T-cell receptor alpha/beta and gamma/delta heterodimers, and with CD3-gamma, -delta and -epsilon, forms the T-cell receptor-CD3 complex. The zeta chain plays an important role in coupling antigen recognition to several intracellular signal-transduction pathways. Low expression of the antigen results in impaired immune response. Two alternatively spliced transcript variants encoding distinct isoforms have been found for this gene. [provided by RefSeq]

**Other Designations:** CD247 antigen, zeta subunit,CD3Z antigen, zeta polypeptide (TiT3 complex),OTTHUMP00000032544,T-cell antigen receptor complex, zeta subunit of CD3,T-cell receptor T3 zeta chain,T-cell receptor zeta chain,T-cell surface glycoprotein CD3 zeta chain

## Gene Information

Entrez GeneID: [1794](#)

Gene Name: DOCK2

Gene Alias: FLJ46592,KIAA0209

Gene Description: dedicator of cytokinesis 2

Omim ID: [603122](#)

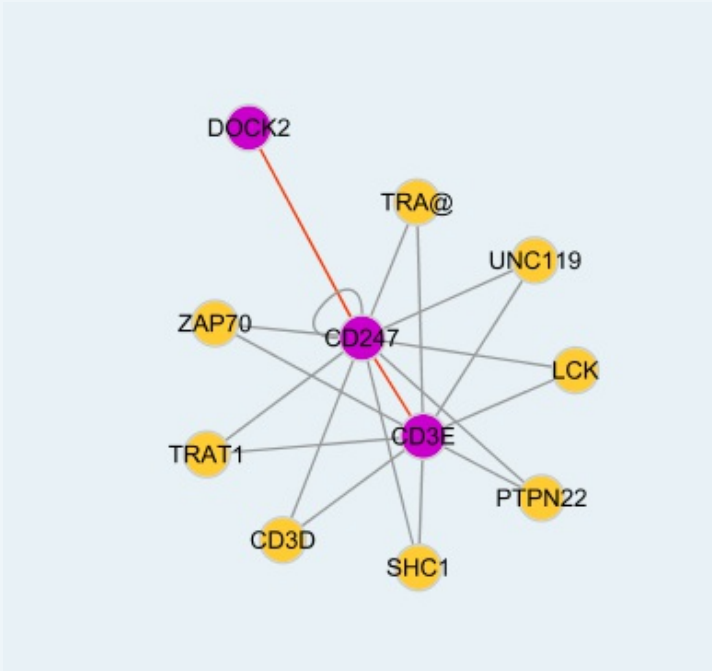
Gene Ontology: [Hyperlink](#)

**Gene Summary:** The DOCK2 gene encodes a hematopoietic cell-specific CDM family protein that is indispensable for lymphocyte chemotaxis.[supplied by OMIM]

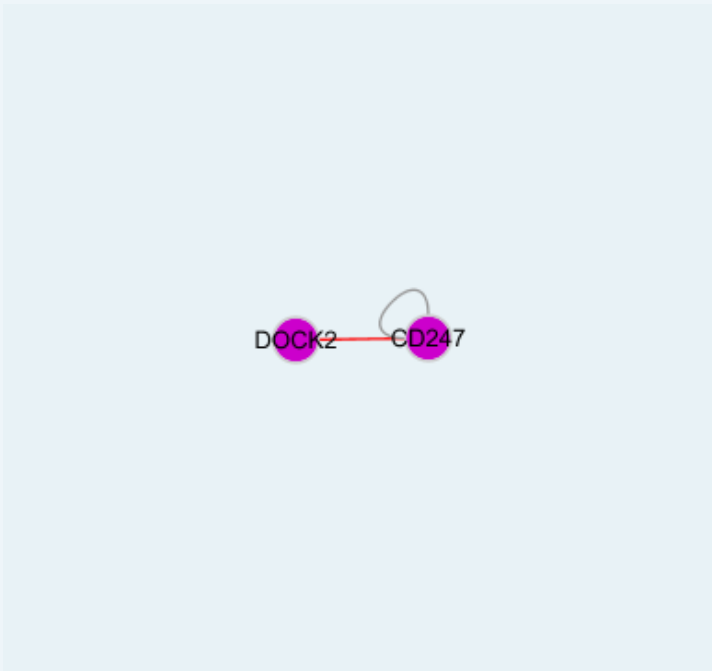
Other dedicator of cyto-kinesis 2

Designations:

### Interactome 1



### Interactome 2



服務條款 | 隱私權政策 | 著作及商標 | 網站地圖

©2016 亞諾法生技股份有限公司 Abnova Corporation. 版權所有.