



SZABO SCANDIC

Part of Europa Biosite

Produktinformation



Forschungsprodukte & Biochemikalien



Zellkultur & Verbrauchsmaterial



Diagnostik & molekulare Diagnostik



Laborgeräte & Service

Weitere Information auf den folgenden Seiten!
See the following pages for more information!



Lieferung & Zahlungsart

siehe unsere [Liefer- und Versandbedingungen](#)

Zuschläge

- Mindermengenzuschlag
- Trockeneiszuschlag
- Gefahrgutzuschlag
- Expressversand

SZABO-SCANDIC HandelsgmbH

Quellenstraße 110, A-1100 Wien

T. +43(0)1 489 3961-0

F. +43(0)1 489 3961-7

mail@szabo-scandic.com

www.szabo-scandic.com

[linkedin.com/company/szaboscandic](https://www.linkedin.com/company/szaboscandic) 

OSMR & ERBB2 Protein Protein Interaction Antibody Pair

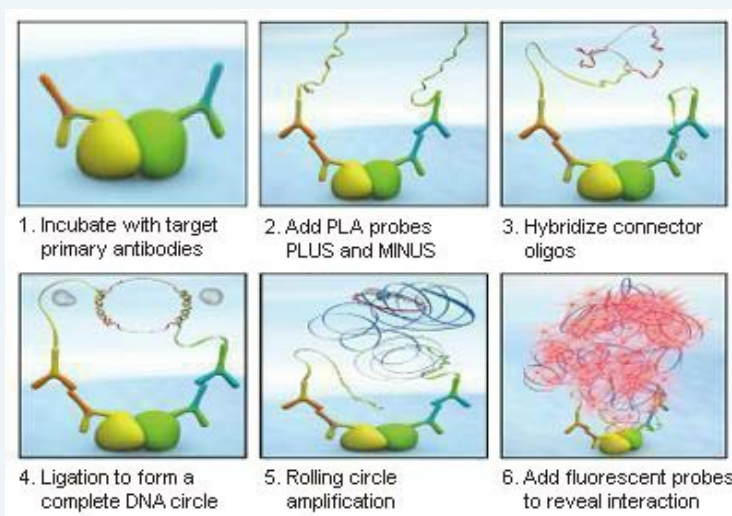
Catalog # : DI0165

規格 : [1 Set]

List All

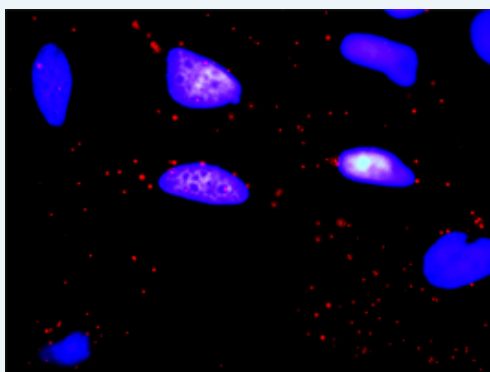
Specification

Product Description: This protein protein interaction antibody pair set comes with two antibodies to detect the protein-protein interaction, one against the OSMR protein, and the other against the ERBB2 protein for use in *in situ* Proximity Ligation Assay. See Publication Reference below.



Reactivity: Human

Quality Control Testing: Protein protein interaction immunofluorescence result.



Representative image of Proximity Ligation Assay of protein-protein interactions between OSMR and ERBB2. HeLa cells were stained with anti-OSMR rabbit purified polyclonal antibody 1:1200 and anti-ERBB2 mouse monoclonal antibody 1:50. Each red dot represents the detection of protein-protein interaction complex. The images were analyzed using an optimized freeware ([BlobFinder](#)) download from The Centre for Image Analysis at Uppsala University.

Supplied Product: Antibody pair set content:
 1. OSMR rabbit purified polyclonal antibody (20 ug)
 2. ERBB2 mouse monoclonal antibody (40 ug)
 *Reagents are sufficient for at least 30-50 assays using recommended protocols.


Storage Instruction: Store reagents of the antibody pair set at -20°C or lower. Please aliquot to avoid repeated freeze thaw cycle. Reagents should be returned to -

Application Image

In situ Proximity Ligation Assay (Cell)

20°C storage immediately after use.

MSDS:

 [Download](#)

Publication Reference

1. [An analysis of protein-protein interactions in cross-talk pathways reveals CRKL as a novel prognostic marker in hepatocellular carcinoma.](#)
Liu CH, Chen TC, Chau GY, Jan YH, Chen CH, Hsu CN, Lin KT, Juang YL, Lu PJ, Cheng HC, Chen MH, Chang CF, Ting YS, Kao CY, Hsiao M, Huang CY. Mol Cell Proteomics. 2013 Feb 8. [Epub ahead of print]

Applications

In situ Proximity Ligation Assay (Cell)

[ERBB2](#) [OSMR](#)

Gene Information

Entrez GeneID: [9180](#)

Gene Name: OSMR

Gene Alias: MGC150626,MGC150627,MGC75127,OSMRB

Gene Description: oncostatin M receptor

Omim ID: [601743](#)

Gene Ontology: [Hyperlink](#)

Gene Summary: Oncostatin M is a member of the IL6 family of cytokines. Functional receptors for IL6 family cytokines are multisubunit complexes involving members of the hematopoietin receptor superfamily. Many IL6 cytokines utilize gp130 as a common receptor subunit. OSM binds to the gp130 receptor subunit and, in association with the leukemia inhibitory factor receptor, induces a proliferative response in permissive cells. OSMR is an alternative subunit (for an OSM receptor complex (a heterodimer of gp130 and OSMR) that is activated by OSM but not by LIF [provided by RefSeq

Other Designations: -

Gene Information

Entrez GeneID: [2064](#)

Gene Name: ERBB2

Gene Alias: CD340,HER-2,HER-2/neu,HER2,NEU,NGL,TKR1

Gene Description: v-erb-b2 erythroblastic leukemia viral oncogene homolog 2, neuro/glioblastoma derived oncogene homolog (avian)

Omim ID: [137215](#), [137800](#), [164870](#), [211980](#)

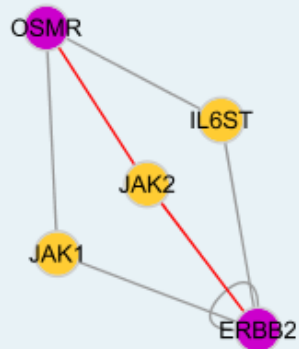
Gene Ontology: [Hyperlink](#)

Gene Summary: This gene encodes a member of the epidermal growth factor (EGF) receptor family of receptor tyrosine kinases. This protein has no ligand binding domain of its own and therefore cannot bind growth factors. However, it does bind tightly to other ligand-bound EGF receptor family members to form a heterodimer, stabilizing ligand binding and

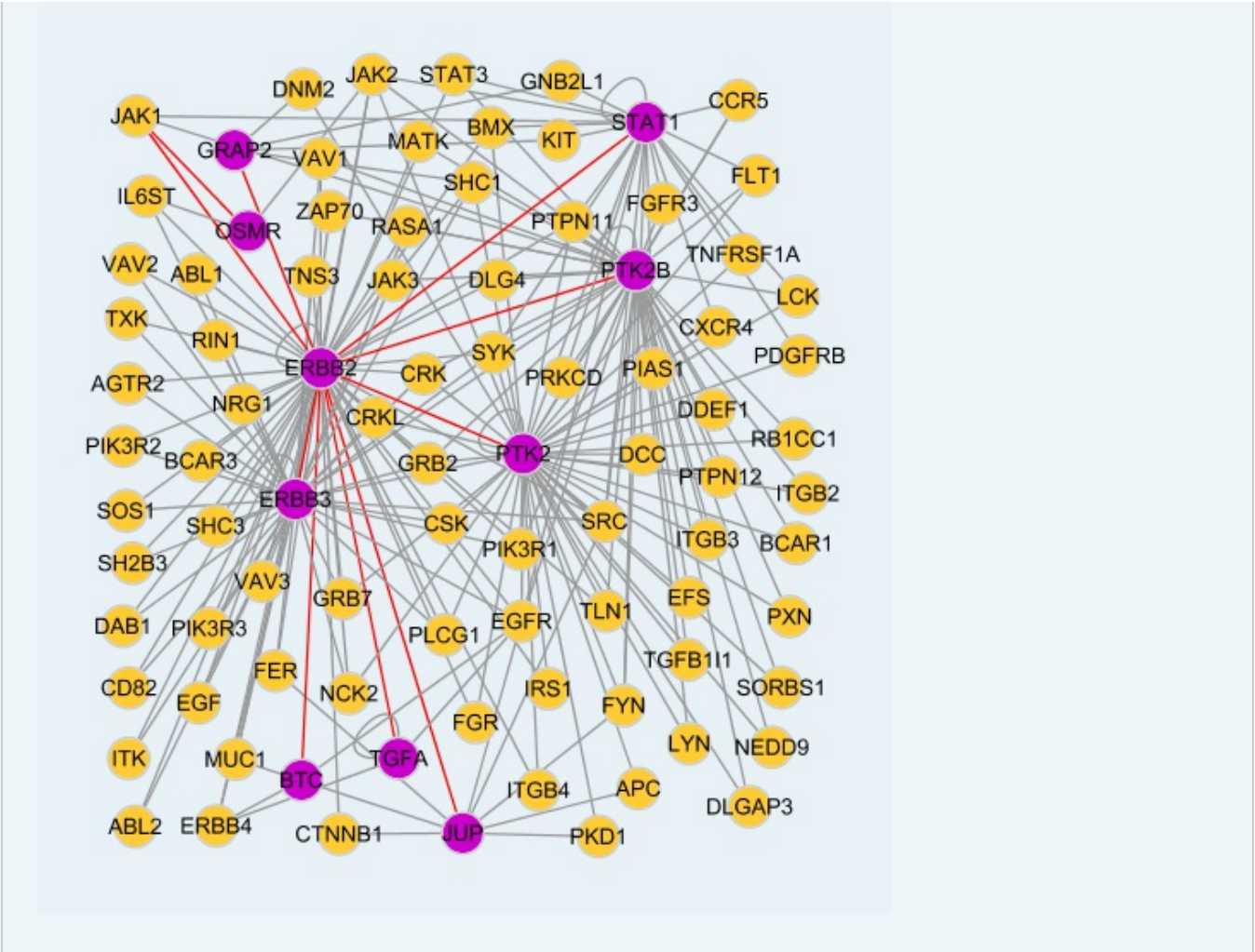
enhancing kinase-mediated activation of downstream signalling pathways, such as those involving mitogen-activated protein kinase and phosphatidylinositol-3 kinase. Allelic variations at amino acid positions 654 and 655 of isoform a (positions 624 and 625 of isoform b) have been reported, with the most common allele, Ile654/Ile655, shown here. Amplification and/or overexpression of this gene has been reported in numerous cancers, including breast and ovarian tumors. Alternative splicing results in several additional transcript variants, some encoding different isoforms and others that have not been fully characterized. [provided by RefSeq]

Other Designations: c-erb B2/neu protein,erbB-2,herstatin,neuroblastoma/glioblastoma derived oncogene homolog,v-erb-b2 avian erythroblastic leukemia viral oncogene homolog 2 (neuro/glioblastoma derived oncogene homolog)

Interactome 1



Interactome 2



[服務條款](#) | [隱私權政策](#) | [著作及商標](#) | [網站地圖](#)

©2016 亞諾法生技股份有限公司 Abnova Corporation. 版權所有.