



SZABO SCANDIC

Part of Europa Biosite

Produktinformation



Forschungsprodukte & Biochemikalien



Zellkultur & Verbrauchsmaterial



Diagnostik & molekulare Diagnostik



Laborgeräte & Service

Weitere Information auf den folgenden Seiten!
See the following pages for more information!



Lieferung & Zahlungsart

siehe unsere [Liefer- und Versandbedingungen](#)

Zuschläge

- Mindermengenzuschlag
- Trockeneiszuschlag
- Gefahrgutzuschlag
- Expressversand

SZABO-SCANDIC HandelsgmbH

Quellenstraße 110, A-1100 Wien

T. +43(0)1 489 3961-0

F. +43(0)1 489 3961-7

mail@szabo-scandic.com

www.szabo-scandic.com

[linkedin.com/company/szaboscandic](https://www.linkedin.com/company/szaboscandic) 

GRAP2 & ERBB2 Protein Protein Interaction Antibody Pair

Catalog # : DI0167

規格 : [1 Set]

List All

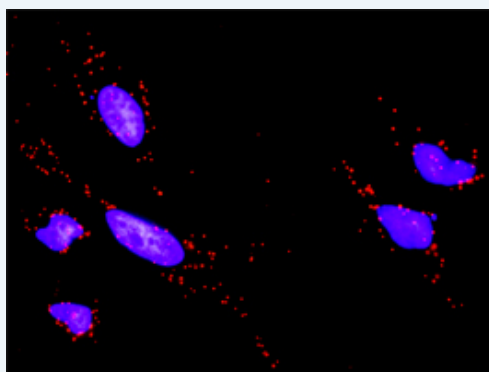
Specification

Product Description: This protein protein interaction antibody pair set comes with two antibodies to detect the protein-protein interaction, one against the GRAP2 protein, and the other against the ERBB2 protein for use in *in situ* Proximity Ligation Assay. See Publication Reference below.



Reactivity: Human

Quality Control Testing: Protein protein interaction immunofluorescence result.



Representative image of Proximity Ligation Assay of protein-protein interactions between GRAP2 and ERBB2. HeLa cells were stained with anti-GRAP2 rabbit purified polyclonal antibody 1:1200 and anti-ERBB2 mouse monoclonal antibody 1:50. Each red dot represents the detection of protein-protein interaction complex. The images were analyzed using an optimized freeware ([BlobFinder](#)) download from The Centre for Image Analysis at Uppsala University.

Supplied Product: Antibody pair set content:
 1. GRAP2 rabbit purified polyclonal antibody (20 ug)
 2. ERBB2 mouse monoclonal antibody (40 ug)
 *Reagents are sufficient for at least 30-50 assays using recommended protocols.

Storage Instruction: Store reagents of the antibody pair set at -20°C or lower. Please aliquot to avoid repeated freeze thaw cycle. Reagents should be returned to -

Application Image

In situ Proximity Ligation Assay (Cell)

20°C storage immediately after use.

MSDS:

 [Download](#)

Publication Reference

1. [An analysis of protein-protein interactions in cross-talk pathways reveals CRKL as a novel prognostic marker in hepatocellular carcinoma.](#)
Liu CH, Chen TC, Chau GY, Jan YH, Chen CH, Hsu CN, Lin KT, Juang YL, Lu PJ, Cheng HC, Chen MH, Chang CF, Ting YS, Kao CY, Hsiao M, Huang CY. Mol Cell Proteomics. 2013 Feb 8. [Epub ahead of print]

Applications

In situ Proximity Ligation Assay (Cell)

[ERBB2](#) [GRAP2](#)

Gene Information

Entrez GeneID: [9402](#)

Gene Name: GRAP2

Gene Alias: GADS, GRAP-2, GRB2L, GRBLG, GRID, GRPL, GrbX, Grf40, Mona, P38

Gene Description: GRB2-related adaptor protein 2

Omim ID: [604518](#)

Gene Ontology: [Hyperlink](#)

Gene Summary: This gene encodes a member of the GRB2/Sem5/Drk family. This member is an adaptor-like protein involved in leukocyte-specific protein-tyrosine kinase signaling. Like its related family member, GRB2-related adaptor protein (GRAP), this protein contains an SH2 domain flanked by two SH3 domains. This protein interacts with other proteins, such as GRB2-associated binding protein 1 (GAB1) and the SLP-76 leukocyte protein (LCP2), through its SH3 domains. Transcript variants utilizing alternative polyA sites exist. [provided by RefSeq]

Other Designations: GRB-2-like protein, GRB2-related protein with insert domain, OTTHUMP00000028837, SH3-SH2-SH3 adaptor molecule, growth factor receptor-binding protein, growth factor receptor-bound protein 2-related adaptor protein 2, hematopoietic cell-associated adaptor protei

Gene Information

Entrez GeneID: [2064](#)

Gene Name: ERBB2

Gene Alias: CD340, HER-2, HER-2/neu, HER2, NEU, NGL, TKR1

Gene Description: v-erb-b2 erythroblastic leukemia viral oncogene homolog 2, neuro/glioblastoma derived oncogene homolog (avian)

Omim ID: [137215](#), [137800](#), [164870](#), [211980](#)

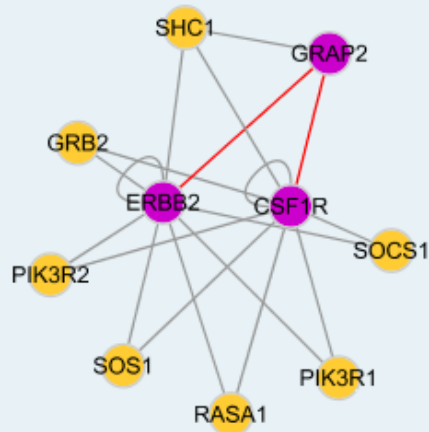
Gene Ontology: [Hyperlink](#)

Gene Summary: This gene encodes a member of the epidermal growth factor (EGF) receptor family of receptor tyrosine kinases. This protein has no ligand binding domain of its own and therefore cannot bind growth factors.

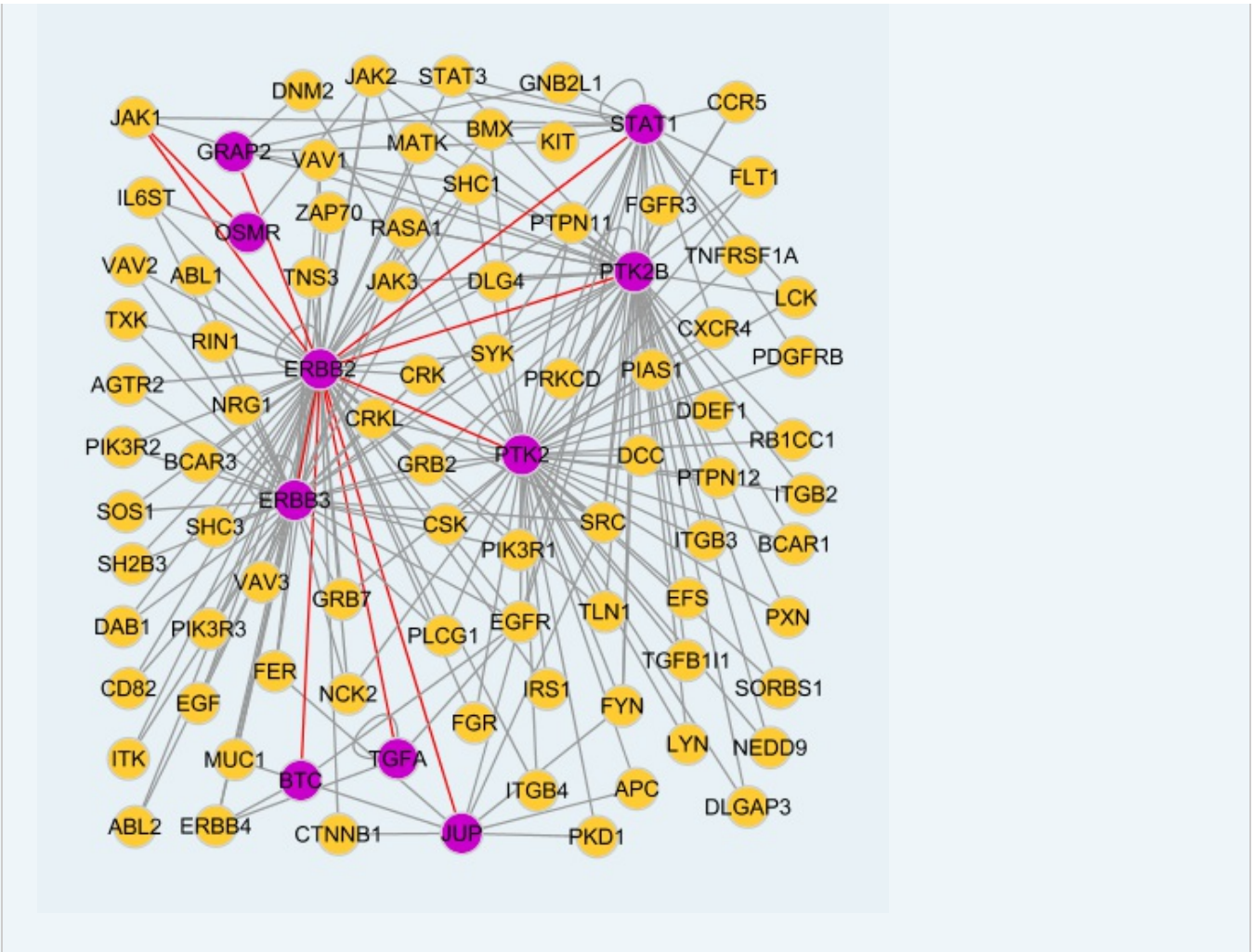
However, it does bind tightly to other ligand-bound EGF receptor family members to form a heterodimer, stabilizing ligand binding and enhancing kinase-mediated activation of downstream signalling pathways, such as those involving mitogen-activated protein kinase and phosphatidylinositol-3 kinase. Allelic variations at amino acid positions 654 and 655 of isoform a (positions 624 and 625 of isoform b) have been reported, with the most common allele, Ile654/Ile655, shown here. Amplification and/or overexpression of this gene has been reported in numerous cancers, including breast and ovarian tumors. Alternative splicing results in several additional transcript variants, some encoding different isoforms and others that have not been fully characterized. [provided by RefSeq]

Other Designations: c-erb B2/neu protein,erbB-2,herstatin,neuroblastoma/glioblastoma derived oncogene homolog,v-erb-b2 avian erythroblastic leukemia viral oncogene homolog 2 (neuro/glioblastoma derived oncogene homolog)

Interactome 1



Interactome 2



[服務條款](#) | [隱私權政策](#) | [著作及商標](#) | [網站地圖](#)

©2016 亞諾法生技股份有限公司 Abnova Corporation. 版權所有.