



# SZABO SCANDIC

Part of Europa Biosite

## Produktinformation



Forschungsprodukte & Biochemikalien



Zellkultur & Verbrauchsmaterial



Diagnostik & molekulare Diagnostik



Laborgeräte & Service

Weitere Information auf den folgenden Seiten!  
See the following pages for more information!



### Lieferung & Zahlungsart

siehe unsere [Liefer- und Versandbedingungen](#)

### Zuschläge

- Mindermengenzuschlag
- Trockeneiszuschlag
- Gefahrgutzuschlag
- Expressversand

### SZABO-SCANDIC HandelsgmbH

Quellenstraße 110, A-1100 Wien

T. +43(0)1 489 3961-0

F. +43(0)1 489 3961-7

[mail@szabo-scandic.com](mailto:mail@szabo-scandic.com)

[www.szabo-scandic.com](http://www.szabo-scandic.com)

[linkedin.com/company/szaboscandic](https://www.linkedin.com/company/szaboscandic) 

## FGA & F2 Protein Protein Interaction Antibody Pair

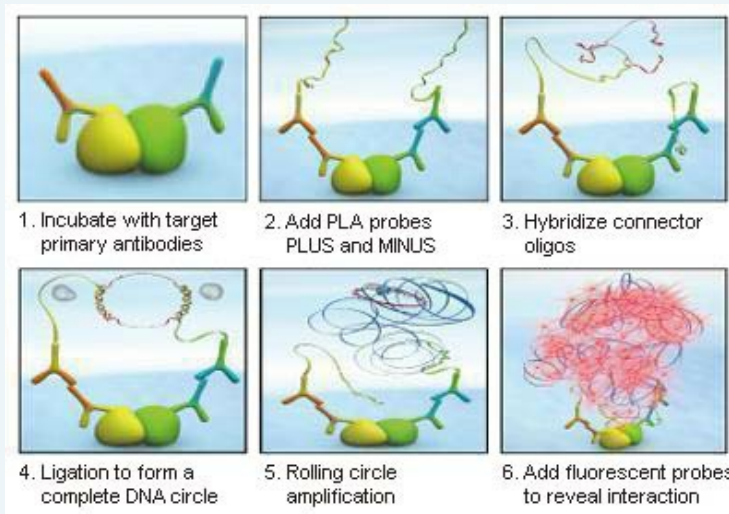
Catalog # : DI0174

規格 : [ 1 Set ]

List All

### Specification

**Product Description:** This protein protein interaction antibody pair set comes with two antibodies to detect the protein-protein interaction, one against the FGA protein, and the other against the F2 protein for use in *in situ* Proximity Ligation Assay. See Publication Reference below.

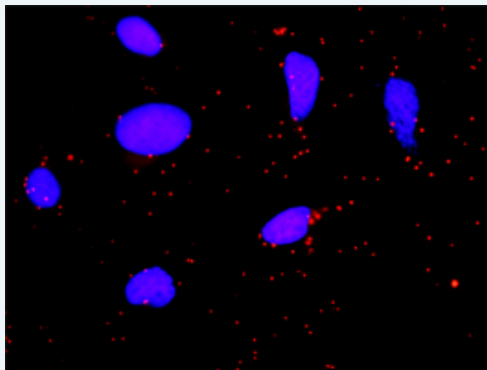


### Application Image

*In situ* Proximity Ligation Assay (Cell)

**Reactivity:** Human

**Quality Control Testing:** Protein protein interaction immunofluorescence result.



Representative image of Proximity Ligation Assay of protein-protein interactions between FGA and F2. HeLa cells were stained with anti-FGA rabbit purified polyclonal antibody 1:1200 and anti-F2 mouse monoclonal antibody 1:50. Each red dot represents the detection of protein-protein interaction complex. The images were analyzed using an optimized freeware ([BlobFinder](#)) download from The Centre for Image Analysis at Uppsala University.

**Supplied Product:** Antibody pair set content:  
 1. FGA rabbit purified polyclonal antibody (20 ug)  
 2. F2 mouse monoclonal antibody (40 ug)  
 \*Reagents are sufficient for at least 30-50 assays using recommended protocols.

**Storage Instruction:** Store reagents of the antibody pair set at -20°C or lower. Please aliquot to avoid repeated freeze thaw cycle. Reagents should be returned to -

20°C storage immediately after use.

MSDS:

 [Download](#)

## Publication Reference

1. [An analysis of protein-protein interactions in cross-talk pathways reveals CRKL as a novel prognostic marker in hepatocellular carcinoma.](#)  
Liu CH, Chen TC, Chau GY, Jan YH, Chen CH, Hsu CN, Lin KT, Juang YL, Lu PJ, Cheng HC, Chen MH, Chang CF, Ting YS, Kao CY, Hsiao M, Huang CY. Mol Cell Proteomics. 2013 Feb 8. [Epub ahead of print]

## Applications

### *In situ* Proximity Ligation Assay (Cell)

[F2](#) [FGA](#)

## Gene Information

Entrez GeneID: [2243](#)

Gene Name: FGA

Gene Alias: Fib2,MGC119422,MGC119423,MGC119425

Gene Description: fibrinogen alpha chain

Omim ID: [105200](#), [134820](#), [202400](#)

Gene Ontology: [Hyperlink](#)

**Gene Summary:** The protein encoded by this gene is the alpha component of fibrinogen, a blood-borne glycoprotein comprised of three pairs of nonidentical polypeptide chains. Following vascular injury, fibrinogen is cleaved by thrombin to form fibrin which is the most abundant component of blood clots. In addition, various cleavage products of fibrinogen and fibrin regulate cell adhesion and spreading, display vasoconstrictor and chemotactic activities, and are mitogens for several cell types. Mutations in this gene lead to several disorders, including dysfibrinogenemia, hypofibrinogenemia, afibrinogenemia and renal amyloidosis. Alternative splicing results in two isoforms which vary in the carboxy-terminus. [provided by RefSeq]

**Other Designations:** fibrinogen, A alpha polypeptide,fibrinogen, alpha chain, isoform alpha preproprotein,fibrinogen, alpha polypeptide

## Gene Information

Entrez GeneID: [2147](#)

Gene Name: F2

Gene Alias: PT

Gene Description: coagulation factor II (thrombin)

Omim ID: [176930](#)

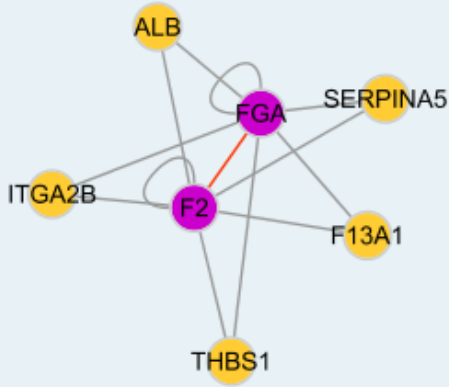
Gene Ontology: [Hyperlink](#)

**Gene Summary:** Coagulation factor II is proteolytically cleaved to form thrombin in the first step of the coagulation cascade which ultimately results in the stemming of blood loss. F2 also plays a role in maintaining vascular

integrity during development and postnatal life. Mutations in F2 leads to various forms of thrombosis and dysprothrombinemia. [provided by RefSeq]

**Other Designations:** coagulation factor II, prothrombin B-chain, serine protease

### Interactome 1



### Interactome 2

