



# SZABO SCANDIC

Part of Europa Biosite

## Produktinformation



Forschungsprodukte & Biochemikalien



Zellkultur & Verbrauchsmaterial



Diagnostik & molekulare Diagnostik



Laborgeräte & Service

Weitere Information auf den folgenden Seiten!  
See the following pages for more information!



### Lieferung & Zahlungsart

siehe unsere [Liefer- und Versandbedingungen](#)

### Zuschläge

- Mindermengenzuschlag
- Trockeneiszuschlag
- Gefahrgutzuschlag
- Expressversand

### SZABO-SCANDIC HandelsgmbH

Quellenstraße 110, A-1100 Wien

T. +43(0)1 489 3961-0

F. +43(0)1 489 3961-7

[mail@szabo-scandic.com](mailto:mail@szabo-scandic.com)

[www.szabo-scandic.com](http://www.szabo-scandic.com)

[linkedin.com/company/szaboscandic](https://www.linkedin.com/company/szaboscandic) 

## FCGR3A & FCGR1A Protein Protein Interaction Antibody Pair

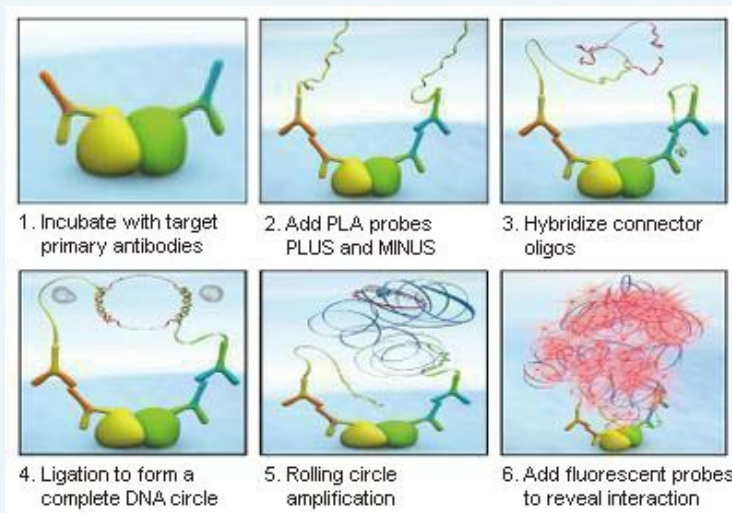
Catalog # : DI0195

規格 : [ 1 Set ]

List All

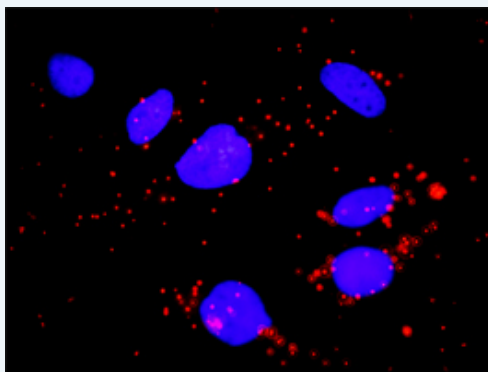
### Specification

**Product Description:** This protein protein interaction antibody pair set comes with two antibodies to detect the protein-protein interaction, one against the FCGR3A protein, and the other against the FCGR1A protein for use in *in situ* Proximity Ligation Assay. See Publication Reference below.



**Reactivity:** Human

**Quality Control Testing:** Protein protein interaction immunofluorescence result.



Representative image of Proximity Ligation Assay of protein-protein interactions between FCGR3A and FCGR1A. HeLa cells were stained with anti-FCGR3A rabbit purified polyclonal antibody 1:1200 and anti-FCGR1A mouse monoclonal antibody 1:50. Each red dot represents the detection of protein-protein interaction complex. The images were analyzed using an optimized freeware ([BlobFinder](#)) download from The Centre for Image Analysis at Uppsala University.

**Supplied Product:** Antibody pair set content:  
 1. FCGR3A rabbit purified polyclonal antibody (20 ug)  
 2. FCGR1A mouse monoclonal antibody (40 ug)  
 \*Reagents are sufficient for at least 30-50 assays using recommended protocols.


**Storage Instruction:** Store reagents of the antibody pair set at -20°C or lower. Please aliquot to avoid repeated freeze thaw cycle. Reagents should be returned to -

### Application Image

*In situ* Proximity Ligation Assay (Cell)

20°C storage immediately after use.

MSDS:

 [Download](#)

## Publication Reference

1. [An analysis of protein-protein interactions in cross-talk pathways reveals CRKL as a novel prognostic marker in hepatocellular carcinoma.](#)  
Liu CH, Chen TC, Chau GY, Jan YH, Chen CH, Hsu CN, Lin KT, Juang YL, Lu PJ, Cheng HC, Chen MH, Chang CF, Ting YS, Kao CY, Hsiao M, Huang CY. Mol Cell Proteomics. 2013 Feb 8. [Epub ahead of print]

## Applications

### *In situ* Proximity Ligation Assay (Cell)

[FCGR1A](#) [FCGR3A](#)

## Gene Information

Entrez GeneID: [2214](#)

Gene Name: FCGR3A

Gene Alias: CD16,CD16A,FCG3,FCGR3,FCGRIII,FCR-10,FCRIII,FCRIIIA,IGFR3

Gene Description: Fc fragment of IgG, low affinity IIIa, receptor (CD16a)

Omim ID: [146740](#), [152700](#)

Gene Ontology: [Hyperlink](#)

**Gene Summary:** This gene encodes a receptor for the Fc portion of immunoglobulin G, and it is involved in the removal of antigen-antibody complexes from the circulation, as well as other other antibody-dependent responses. This gene (FCGR3A) is highly similar to another nearby gene (FCGR3B) located on chromosome 1. The receptor encoded by this gene is expressed on natural killer (NK) cells as an integral membrane glycoprotein anchored through a transmembrane peptide, whereas FCGR3B is expressed on polymorphonuclear neutrophils (PMN) where the receptor is anchored through a phosphatidylinositol (PI) linkage. Mutations in this gene have been linked to susceptibility to recurrent viral infections, susceptibility to systemic lupus erythematosus, and alloimmune neonatal neutropenia. Alternatively spliced transcript variants encoding different isoforms have been found for this gene. [provided by RefSeq]

**Other Designations:** Fc fragment of IgG, low affinity III, receptor for (CD16),Fc fragment of IgG, low affinity IIIa, receptor for (CD16),Fc gamma receptor III-A,Fc-gamma RIII-alpha,Fc-gamma RIIIa,Fc-gamma receptor III-2 (CD 16),Fc-gamma receptor IIIb (CD16),FcgammaRIIIA,OTTH

## Gene Information

Entrez GeneID: [2209](#)

Gene Name: FCGR1A

Gene Alias: CD64,CD64A,FCRI,FLJ18345,IGFR1

Gene Description: Fc fragment of IgG, high affinity Ia, receptor (CD64)

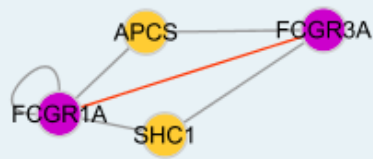
Omim ID: [146760](#)

**Gene Ontology:** [Hyperlink](#)

**Gene Summary:** This gene encodes a protein that plays an important role in the immune response. This protein is a high-affinity Fc-gamma receptor. The gene is one of three related gene family members located on chromosome 1. [provided by RefSeq]

**Other Designations:** Fc fragment of IgG, high affinity Ia, receptor for (CD64),Fc gamma receptor,Fc-gamma RI,Fc-gamma receptor IA1,IgG Fc receptor I,OTTHUMP00000013913

### Interactome 1



### Interactome 2

