



SZABO SCANDIC

Part of Europa Biosite

Produktinformation



Forschungsprodukte & Biochemikalien



Zellkultur & Verbrauchsmaterial



Diagnostik & molekulare Diagnostik



Laborgeräte & Service

Weitere Information auf den folgenden Seiten!
See the following pages for more information!



Lieferung & Zahlungsart

siehe unsere [Liefer- und Versandbedingungen](#)

Zuschläge

- Mindermengenzuschlag
- Trockeneiszuschlag
- Gefahrgutzuschlag
- Expressversand

SZABO-SCANDIC HandelsgmbH

Quellenstraße 110, A-1100 Wien

T. +43(0)1 489 3961-0

F. +43(0)1 489 3961-7

mail@szabo-scandic.com

www.szabo-scandic.com

[linkedin.com/company/szaboscandic](https://www.linkedin.com/company/szaboscandic) 

SYK & FCGR1A Protein Protein Interaction Antibody Pair

Catalog # : DI0196

規格 : [1 Set]

List All

Specification

Product Description: This protein protein interaction antibody pair set comes with two antibodies to detect the protein-protein interaction, one against the SYK protein, and the other against the FCGR1A protein for use in *in situ* Proximity Ligation Assay. See Publication Reference below.

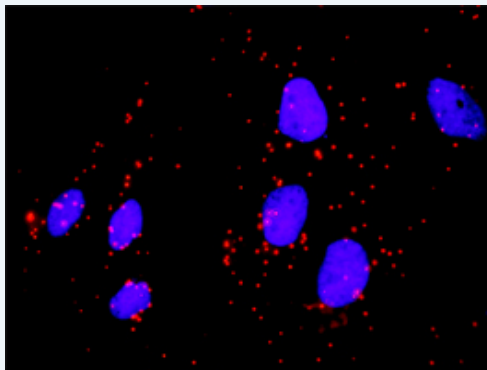


Application Image

In situ Proximity Ligation Assay (Cell)

Reactivity: Human

Quality Control Testing: Protein protein interaction immunofluorescence result.



Representative image of Proximity Ligation Assay of protein-protein interactions between SYK and FCGR1A. HeLa cells were stained with anti-SYK rabbit purified polyclonal antibody 1:1200 and anti-FCGR1A mouse monoclonal antibody 1:50. Each red dot represents the detection of protein-protein interaction complex. The images were analyzed using an optimized freeware ([BlobFinder](#)) download from The Centre for Image Analysis at Uppsala University.

Supplied Product: Antibody pair set content:
 1. SYK rabbit purified polyclonal antibody (20 ug)
 2. FCGR1A mouse monoclonal antibody (40 ug)
 *Reagents are sufficient for at least 30-50 assays using recommended protocols.

Storage Instruction: Store reagents of the antibody pair set at -20°C or lower. Please aliquot to avoid repeated freeze thaw cycle. Reagents should be returned to -

20°C storage immediately after use.

MSDS:  [Download](#)

Publication Reference

1. [An analysis of protein-protein interactions in cross-talk pathways reveals CRKL as a novel prognostic marker in hepatocellular carcinoma.](#)
Liu CH, Chen TC, Chau GY, Jan YH, Chen CH, Hsu CN, Lin KT, Juang YL, Lu PJ, Cheng HC, Chen MH, Chang CF, Ting YS, Kao CY, Hsiao M, Huang CY. Mol Cell Proteomics. 2013 Feb 8. [Epub ahead of print]

Applications

In situ Proximity Ligation Assay (Cell)

[FCGR1A](#) [SYK](#)

Gene Information

Entrez GeneID: [6850](#)

Gene Name: SYK

Gene Alias: DKFZp313N1010,FLJ25043,FLJ37489

Gene Description: spleen tyrosine kinase

Omim ID: [600085](#)

Gene Ontology: [Hyperlink](#)

Other Designations: OTTHUMP00000021627,OTTHUMP00000021628

Gene Information

Entrez GeneID: [2209](#)

Gene Name: FCGR1A

Gene Alias: CD64,CD64A,FCRI,FLJ18345,IGFR1

Gene Description: Fc fragment of IgG, high affinity Ia, receptor (CD64)

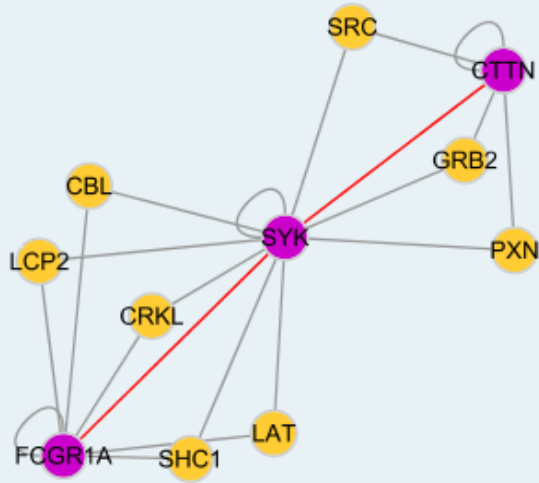
Omim ID: [146760](#)

Gene Ontology: [Hyperlink](#)

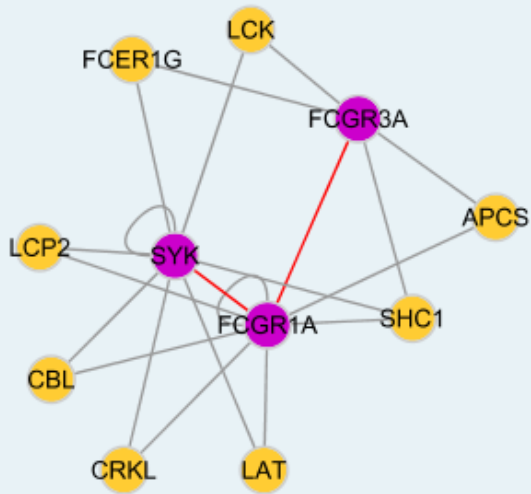
Gene Summary: This gene encodes a protein that plays an important role in the immune response. This protein is a high-affinity Fc-gamma receptor. The gene is one of three related gene family members located on chromosome 1. [provided by RefSeq]

Other Designations: Fc fragment of IgG, high affinity Ia, receptor for (CD64),Fc gamma receptor,Fc-gamma RI,Fc-gamma receptor IA1,IgG Fc receptor I,OTTHUMP00000013913

Interactome 1



Interactome 2



[服務條款](#) | [隱私權政策](#) | [著作及商標](#) | [網站地圖](#)

©2016 亞諾法生技股份有限公司 Abnova Corporation. 版權所有.