



# SZABO SCANDIC

Part of Europa Biosite

## Produktinformation



Forschungsprodukte & Biochemikalien



Zellkultur & Verbrauchsmaterial



Diagnostik & molekulare Diagnostik



Laborgeräte & Service

Weitere Information auf den folgenden Seiten!  
See the following pages for more information!



### Lieferung & Zahlungsart

siehe unsere [Liefer- und Versandbedingungen](#)

### Zuschläge

- Mindermengenzuschlag
- Trockeneiszuschlag
- Gefahrgutzuschlag
- Expressversand

### SZABO-SCANDIC HandelsgmbH

Quellenstraße 110, A-1100 Wien

T. +43(0)1 489 3961-0

F. +43(0)1 489 3961-7

[mail@szabo-scandic.com](mailto:mail@szabo-scandic.com)

[www.szabo-scandic.com](http://www.szabo-scandic.com)

[linkedin.com/company/szaboscandic](https://www.linkedin.com/company/szaboscandic) 

## GSK3B & FOXO1 Protein Protein Interaction Antibody Pair

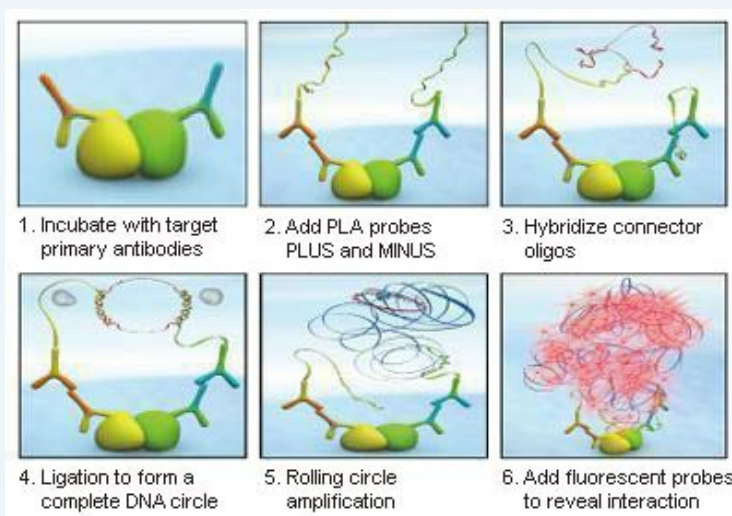
Catalog # : DI0208

規格 : [ 1 Set ]

List All

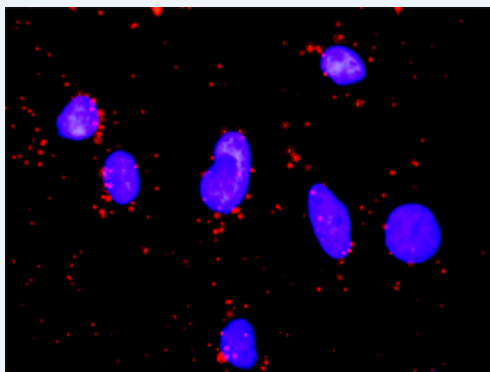
### Specification

**Product Description:** This protein protein interaction antibody pair set comes with two antibodies to detect the protein-protein interaction, one against the GSK3B protein, and the other against the FOXO1 protein for use in *in situ* Proximity Ligation Assay. See Publication Reference below.



**Reactivity:** Human

**Quality Control Testing:** Protein protein interaction immunofluorescence result.



Representative image of Proximity Ligation Assay of protein-protein interactions between GSK3B and FOXO1. HeLa cells were stained with anti-GSK3B rabbit purified polyclonal antibody 1:1200 and anti-FOXO1 mouse monoclonal antibody 1:50. Each red dot represents the detection of protein-protein interaction complex. The images were analyzed using an optimized freeware ([BlobFinder](#)) download from The Centre for Image Analysis at Uppsala University.

**Supplied Product:** Antibody pair set content:  
 1. GSK3B rabbit purified polyclonal antibody (20 ug)  
 2. FOXO1 mouse monoclonal antibody (40 ug)  
 \*Reagents are sufficient for at least 30-50 assays using recommended protocols.

**Storage Instruction:** Store reagents of the antibody pair set at -20°C or lower. Please aliquot to avoid repeated freeze thaw cycle. Reagents should be returned to -

### Application Image

*In situ* Proximity Ligation Assay (Cell)

20°C storage immediately after use.

MSDS:  [Download](#)

### Publication Reference

1. [An analysis of protein-protein interactions in cross-talk pathways reveals CRKL as a novel prognostic marker in hepatocellular carcinoma.](#)  
Liu CH, Chen TC, Chau GY, Jan YH, Chen CH, Hsu CN, Lin KT, Juang YL, Lu PJ, Cheng HC, Chen MH, Chang CF, Ting YS, Kao CY, Hsiao M, Huang CY. Mol Cell Proteomics. 2013 Feb 8. [Epub ahead of print]

### Applications

#### *In situ* Proximity Ligation Assay (Cell)

[FOXO1](#) [GSK3B](#)

### Gene Information

Entrez GeneID: [2932](#)

Gene Name: GSK3B

Gene Alias: -

Gene Description: glycogen synthase kinase 3 beta

Omim ID: [605004](#)

Gene Ontology: [Hyperlink](#)

**Gene Summary:** The protein encoded by this gene is a serine-threonine kinase, belonging to the glycogen synthase kinase subfamily. It is involved in energy metabolism, neuronal cell development, and body pattern formation. Polymorphisms in this gene have been implicated in modifying risk of Parkinson disease, and studies in mice show that overexpression of this gene may be relevant to the pathogenesis of Alzheimer disease. Alternatively spliced transcript variants encoding different isoforms have been found for this gene

Other Designations: GSK3beta isoform, glycogen synthase kinase-3 beta

### Gene Information

Entrez GeneID: [2308](#)

Gene Name: FOXO1

Gene Alias: FKH1,FKHR,FOXO1A

Gene Description: forkhead box O1

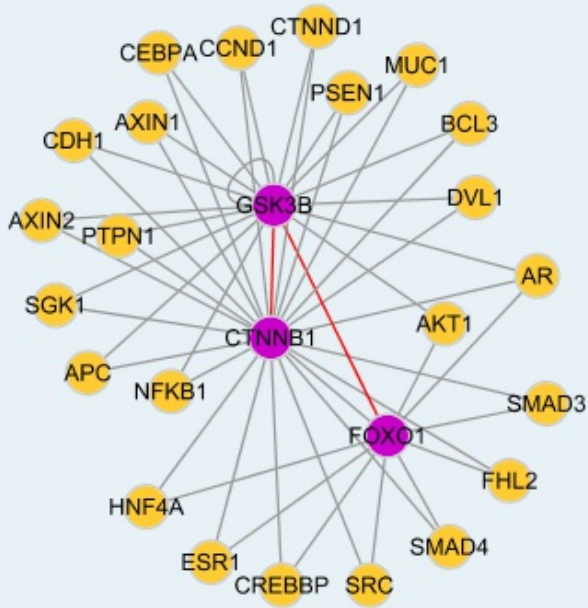
Omim ID: [136533](#), [268220](#)

Gene Ontology: [Hyperlink](#)

**Gene Summary:** This gene belongs to the forkhead family of transcription factors which are characterized by a distinct forkhead domain. The specific function of this gene has not yet been determined; however, it may play a role in myogenic growth and differentiation. Translocation of this gene with PAX3 has been associated with alveolar rhabdomyosarcoma. [provided by RefSeq]

**Other** OTTHUMP00000018301, forkhead box O1A  
**Designations:** (rhabdomyosarcoma), forkhead homolog in rhabdomyosarcoma, forkhead, Drosophila, homolog of, in rhabdomyosarcoma

### Interactome



[服務條款](#) | [隱私權政策](#) | [著作及商標](#) | [網站地圖](#)

©2016 亞諾法生技股份有限公司 Abnova Corporation. 版權所有.