



SZABO SCANDIC

Part of Europa Biosite

Produktinformation



Forschungsprodukte & Biochemikalien



Zellkultur & Verbrauchsmaterial



Diagnostik & molekulare Diagnostik



Laborgeräte & Service

Weitere Information auf den folgenden Seiten!
See the following pages for more information!



Lieferung & Zahlungsart

siehe unsere [Liefer- und Versandbedingungen](#)

Zuschläge

- Mindermengenzuschlag
- Trockeneiszuschlag
- Gefahrgutzuschlag
- Expressversand

SZABO-SCANDIC HandelsgmbH

Quellenstraße 110, A-1100 Wien

T. +43(0)1 489 3961-0

F. +43(0)1 489 3961-7

mail@szabo-scandic.com

www.szabo-scandic.com

[linkedin.com/company/szaboscandic](https://www.linkedin.com/company/szaboscandic) 

APPL1 & PIK3CA Protein Protein Interaction Antibody Pair

Catalog # : DI0292

規格 : [1 Set]

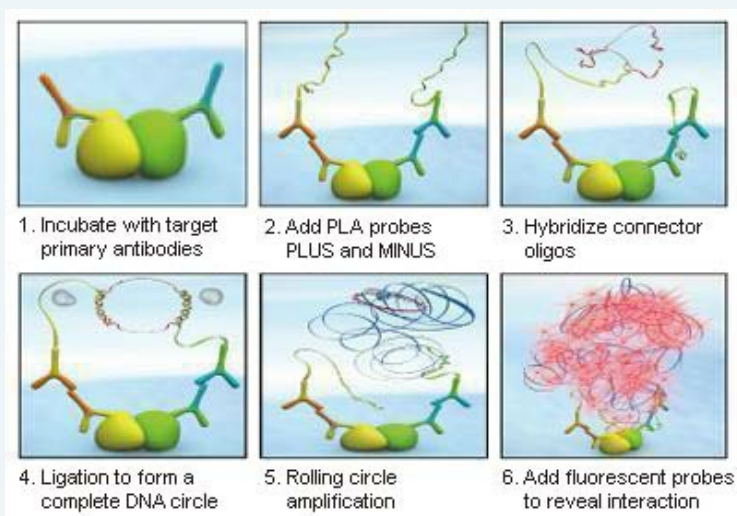
List All

Specification

Product Description: This protein protein interaction antibody pair set comes with two antibodies to detect the protein-protein interaction, one against the APPL1 protein, and the other against the PIK3CA protein for use in *in situ* Proximity Ligation Assay. See Publication Reference below.

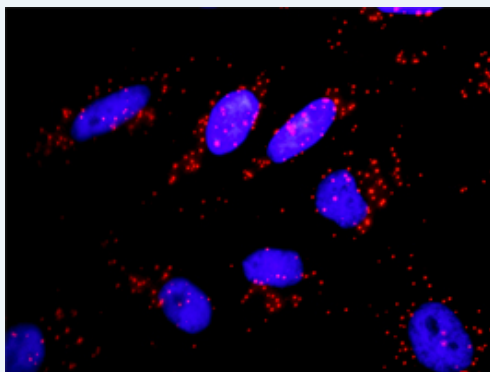
Application Image

In situ Proximity Ligation Assay (Cell)



Reactivity: Human

Quality Control Testing: Protein protein interaction immunofluorescence result.



Representative image of Proximity Ligation Assay of protein-protein interactions between APPL1 and PIK3CA. HeLa cells were stained with anti-APPL1 rabbit purified polyclonal antibody 1:1200 and anti-PIK3CA mouse monoclonal antibody 1:50. Each red dot represents the detection of protein-protein interaction complex. The images were analyzed using an optimized freeware ([BlobFinder](#)) download from The Centre for Image Analysis at Uppsala University.

Supplied Product: Antibody pair set content:
 1. APPL1 rabbit purified polyclonal antibody (20 ug)
 2. PIK3CA mouse monoclonal antibody (40 ug)
 *Reagents are sufficient for at least 30-50 assays using recommended protocols.

Storage Instruction: Store reagents of the antibody pair set at -20°C or lower. Please aliquot to avoid repeated freeze thaw cycle. Reagents should be returned to -

20°C storage immediately after use.

MSDS:

 [Download](#)

Publication Reference

1. [An analysis of protein-protein interactions in cross-talk pathways reveals CRKL as a novel prognostic marker in hepatocellular carcinoma.](#)
Liu CH, Chen TC, Chau GY, Jan YH, Chen CH, Hsu CN, Lin KT, Juang YL, Lu PJ, Cheng HC, Chen MH, Chang CF, Ting YS, Kao CY, Hsiao M, Huang CY. Mol Cell Proteomics. 2013 Feb 8. [Epub ahead of print]

Applications

In situ Proximity Ligation Assay (Cell)

[PIK3CA](#) [APPL1](#)

Gene Information

Entrez GeneID: [26060](#)

Gene Name: APPL1

Gene Alias: APPL,DIP13alpha

Gene Description: adaptor protein, phosphotyrosine interaction, PH domain and leucine zipper containing 1

Omim ID: [604299](#)

Gene Ontology: [Hyperlink](#)

Gene Summary: The protein encoded by this gene has been shown to be involved in the regulation of cell proliferation, and in the crosstalk between the adiponectin signalling and insulin signalling pathways. The encoded protein binds many other proteins, including RAB5A, DCC, AKT2, PIK3CA, adiponectin receptors, and proteins of the NuRD/MeCP1 complex. This protein is found associated with endosomal membranes, but can be released by EGF and translocated to the nucleus. [provided by RefSeq]

Other Designations: AKT2 interactor, adaptor protein containing pH domain, PTB domain and leucine zipper motif 1, signaling adaptor protein DIP13alpha

Gene Information

Entrez GeneID: [5290](#)

Gene Name: PIK3CA

Gene Alias: MGC142161, MGC142163, PI3K, p110-alpha

Gene Description: phosphoinositide-3-kinase, catalytic, alpha polypeptide

Omim ID: [114480](#), [114500](#), [171834](#), [604370](#)

Gene Ontology: [Hyperlink](#)

Gene Summary: Phosphatidylinositol 3-kinase is composed of an 85 kDa regulatory subunit and a 110 kDa catalytic subunit. The protein encoded by this gene represents the catalytic subunit, which uses ATP to phosphorylate PtdIns, PtdIns4P and PtdIns(4,5)P2. This gene has been found to be oncogenic and has been implicated in cervical cancers. [provided by RefSeq]

Other PI3-kinase p110 subunit alpha, PtdIns-3-kinase
Designations: p110, phosphatidylinositol 3-kinase, catalytic, 110-KD,
alpha, phosphatidylinositol 3-kinase, catalytic, alpha
polypeptide, phosphatidylinositol-4,5-bisphosphate 3-kinase catalytic
subunit, alpha isoform

[服務條款](#) | [隱私權政策](#) | [著作及商標](#) | [網站地圖](#)

©2016 亞諾法生技股份有限公司 Abnova Corporation. 版權所有.