



SZABO SCANDIC

Part of Europa Biosite

Produktinformation



Forschungsprodukte & Biochemikalien



Zellkultur & Verbrauchsmaterial



Diagnostik & molekulare Diagnostik



Laborgeräte & Service

Weitere Information auf den folgenden Seiten!
See the following pages for more information!



Lieferung & Zahlungsart

siehe unsere [Liefer- und Versandbedingungen](#)

Zuschläge

- Mindermengenzuschlag
- Trockeneiszuschlag
- Gefahrgutzuschlag
- Expressversand

SZABO-SCANDIC HandelsgmbH

Quellenstraße 110, A-1100 Wien

T. +43(0)1 489 3961-0

F. +43(0)1 489 3961-7

mail@szabo-scandic.com

www.szabo-scandic.com

[linkedin.com/company/szaboscandic](https://www.linkedin.com/company/szaboscandic) 

RALBP1 & IKBKG Protein Protein Interaction Antibody Pair

Catalog # : DI0301

規格 : [1 Set]

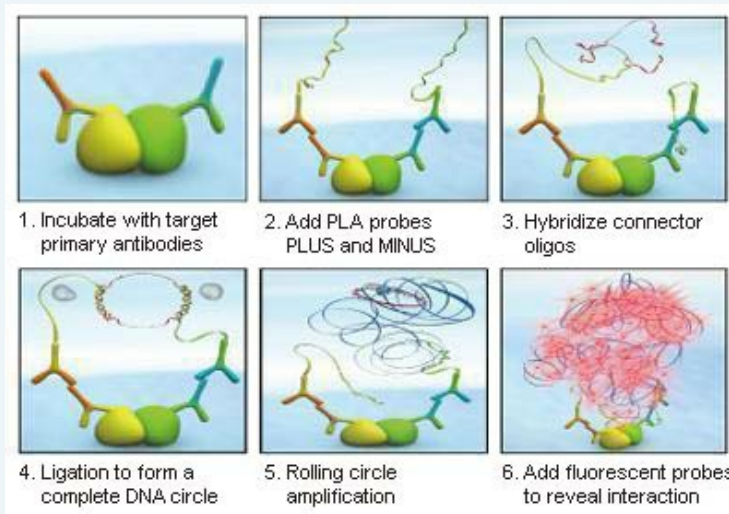
List All

Specification

Product Description: This protein protein interaction antibody pair set comes with two antibodies to detect the protein-protein interaction, one against the RALBP1 protein, and the other against the IKBKG protein for use in *in situ* Proximity Ligation Assay. See Publication Reference below.

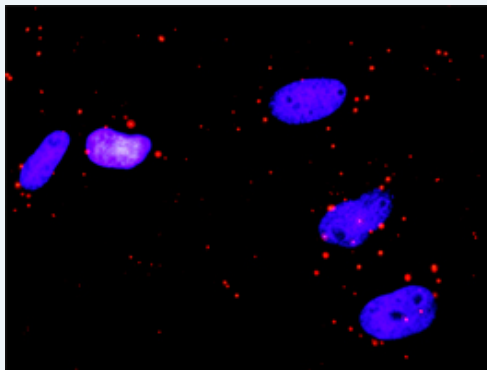
Application Image

In situ Proximity Ligation Assay (Cell)



Reactivity: Human

Quality Control Testing: Protein protein interaction immunofluorescence result.




Representative image of Proximity Ligation Assay of protein-protein interactions between RALBP1 and IKBKG. HeLa cells were stained with anti-RALBP1 rabbit purified polyclonal antibody 1:1200 and anti-ICKBKG mouse monoclonal antibody 1:50. Each red dot represents the detection of protein-protein interaction complex. The images were analyzed using an optimized freeware ([BlobFinder](#)) download from The Centre for Image Analysis at Uppsala University.

Supplied Product: Antibody pair set content:
 1. RALBP1 rabbit purified polyclonal antibody (20 ug)
 2. IKBKG mouse monoclonal antibody (40 ug)
 *Reagents are sufficient for at least 30-50 assays using recommended protocols.

Storage Instruction: Store reagents of the antibody pair set at -20°C or lower. Please aliquot to avoid repeated freeze thaw cycle. Reagents should be returned to -

20°C storage immediately after use.

MSDS:

 [Download](#)

Publication Reference

1. [An analysis of protein-protein interactions in cross-talk pathways reveals CRKL as a novel prognostic marker in hepatocellular carcinoma.](#)
Liu CH, Chen TC, Chau GY, Jan YH, Chen CH, Hsu CN, Lin KT, Juang YL, Lu PJ, Cheng HC, Chen MH, Chang CF, Ting YS, Kao CY, Hsiao M, Huang CY. Mol Cell Proteomics. 2013 Feb 8. [Epub ahead of print]

Applications

In situ Proximity Ligation Assay (Cell)

[IKBKG](#) [RALBP1](#)

Gene Information

Entrez GeneID: [10928](#)

Gene Name: RALBP1

Gene Alias: RIP1,RLIP1,RLIP76

Gene Description: ralA binding protein 1

Omim ID: [605801](#)

Gene Ontology: [Hyperlink](#)

Other Designations: OTTHUMP00000162351,ral-interacting protein 1,ralA-binding protein 1

Gene Information

Entrez GeneID: [8517](#)

Gene Name: IKBKG

Gene Alias: AMCBX1,FIP-3,FIP3,Fip3p,IKK-gamma,IP,IP1,IP2,IPD2,NEMO

Gene Description: inhibitor of kappa light polypeptide gene enhancer in B-cells, kinase gamma

Omim ID: [300248](#), [300291](#), [300301](#), [300584](#), [300636](#), [308300](#)

Gene Ontology: [Hyperlink](#)

Gene Summary: This gene encodes the regulatory subunit of the inhibitor of kappaB kinase (IKK) complex, which activates NF-kappaB resulting in activation of genes involved in inflammation, immunity, cell survival, and other pathways. Mutations in this gene result in incontinentia pigmenti, hypohidrotic ectodermal dysplasia, and several other types of immunodeficiencies. Multiple transcript variants encoding different isoforms have been found for this gene. A pseudogene highly similar to this locus is located in an adjacent region of the X chromosome. [supplied by RefSeq]

Other Designations: NFkappaB essential modulator,OTTHUMP00000026027,OTTHUMP00000026028,OTTHUMP00000026029,incontinentia pigmenti

