



SZABO SCANDIC

Part of Europa Biosite

Produktinformation



Forschungsprodukte & Biochemikalien



Zellkultur & Verbrauchsmaterial



Diagnostik & molekulare Diagnostik



Laborgeräte & Service

Weitere Information auf den folgenden Seiten!
See the following pages for more information!



Lieferung & Zahlungsart

siehe unsere [Liefer- und Versandbedingungen](#)

Zuschläge

- Mindermengenzuschlag
- Trockeneiszuschlag
- Gefahrgutzuschlag
- Expressversand

SZABO-SCANDIC HandelsgmbH

Quellenstraße 110, A-1100 Wien

T. +43(0)1 489 3961-0

F. +43(0)1 489 3961-7

mail@szabo-scandic.com

www.szabo-scandic.com

[linkedin.com/company/szaboscandic](https://www.linkedin.com/company/szaboscandic) 

CASP3 & CASP9 Protein Protein Interaction Antibody Pair

Catalog # : DI0333

規格 : [1 Set]

List All

Specification

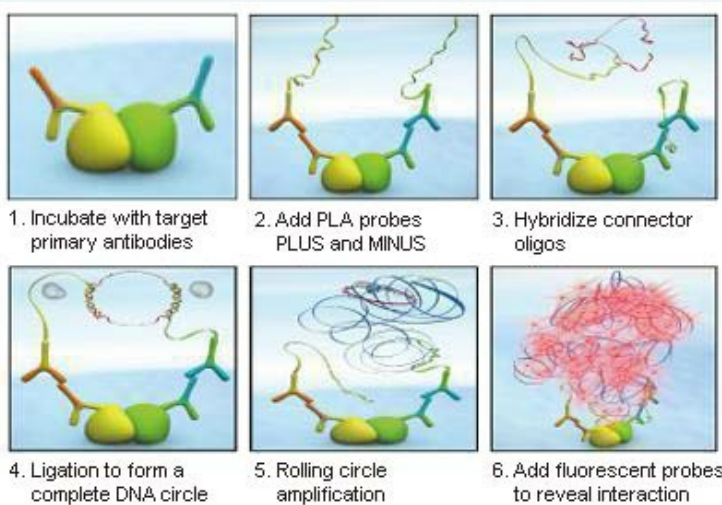
Product

Description:

This protein protein interaction antibody pair set comes with two antibodies to detect the protein-protein interaction, one against the CASP3 protein, and the other against the CASP9 protein for use in *in situ* Proximity Ligation Assay. See Publication Reference below.

Application Image

In situ Proximity Ligation Assay
(Cell)



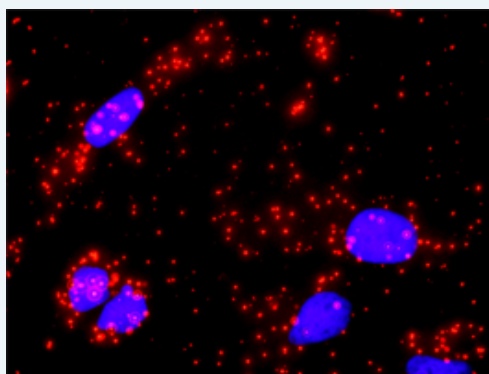
Reactivity:

Human

Quality Control

Protein protein interaction immunofluorescence result.

Testing:



Representative image of Proximity Ligation Assay of protein-protein interactions between CASP3 and CASP9. HeLa cells were stained with anti-CASP3 rabbit purified polyclonal antibody 1:1200 and anti-CASP9 mouse monoclonal antibody 1:50. Each red dot represents the detection of protein-protein interaction complex. The images were analyzed using an optimized freeware ([BlobFinder](#)) download from The Centre for Image Analysis at Uppsala University.

Supplied

Product:

Antibody pair set content:

1. CASP3 rabbit purified polyclonal antibody (20 ug)
2. CASP9 mouse monoclonal antibody (40 ug)

*Reagents are sufficient for at least 30-50 assays using recommended protocols.

Storage

Instruction:

Store reagents of the antibody pair set at -20°C or lower. Please aliquot to avoid repeated freeze thaw cycle. Reagents should be returned to -

MSDS:[Download](#)**Publication Reference**

1. An analysis of protein-protein interactions in cross-talk pathways reveals CRKL as a novel prognostic marker in hepatocellular carcinoma. Liu CH, Chen TC, Chau GY, Jan YH, Chen CH, Hsu CN, Lin KT, Juang YL, Lu PJ, Cheng HC, Chen MH, Chang CF, Ting YS, Kao CY, Hsiao M, Huang CY. Mol Cell Proteomics. 2013 Feb 8. [Epub ahead of print]

Applications***In situ* Proximity Ligation Assay (Cell)**[CASP3](#) [CASP9](#)**Gene Information****Entrez GeneID:** [836](#)**Gene Name:** CASP3**Gene Alias:** CPP32, CPP32B, SCA-1**Gene Description:** caspase 3, apoptosis-related cysteine peptidase**Omim ID:** [600636](#)**Gene Ontology:** [Hyperlink](#)

Gene Summary: This gene encodes a protein which is a member of the cysteine-aspartic acid protease (caspase) family. Sequential activation of caspases plays a central role in the execution-phase of cell apoptosis. Caspases exist as inactive proenzymes which undergo proteolytic processing at conserved aspartic residues to produce two subunits, large and small, that dimerize to form the active enzyme. This protein cleaves and activates caspases 6, 7 and 9, and the protein itself is processed by caspases 8, 9 and 10. It is the predominant caspase involved in the cleavage of amyloid-beta 4A precursor protein, which is associated with neuronal death in Alzheimer's disease. Alternative splicing of this gene results in two transcript variants that encode the same protein. [provided by RefSeq]

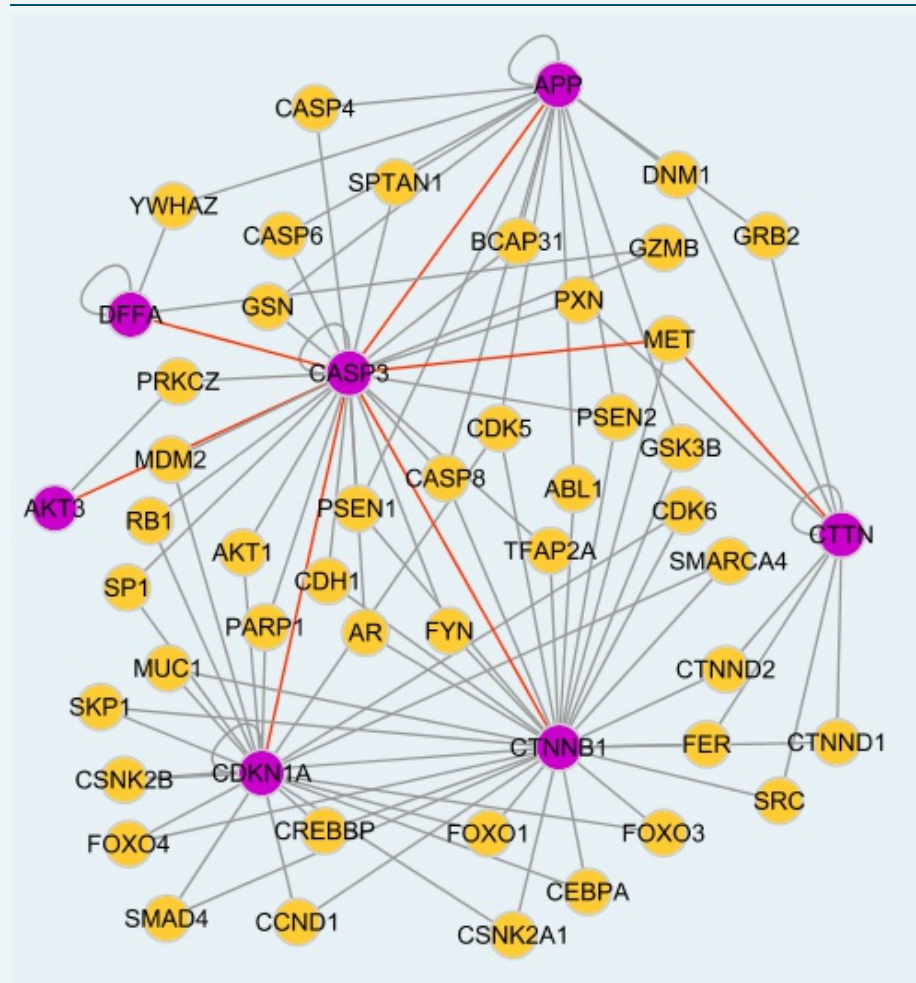
Other Designations: OTTHUMP00000165054, PARP cleavage protease, SREBP cleavage activity 1, Yama, apopain, caspase 3, caspase 3, apoptosis-related cysteine protease, cysteine protease CPP32, procaspase3

Gene Information**Entrez GeneID:** [842](#)**Gene Name:** CASP9**Gene Alias:** APAF-3, APAF3, CASPASE-9c, ICE-LAP6, MCH6**Gene Description:** caspase 9, apoptosis-related cysteine peptidase**Omim ID:** [602234](#)**Gene Ontology:** [Hyperlink](#)**Gene Summary:** This gene encodes a member of the cysteine-aspartic acid protease

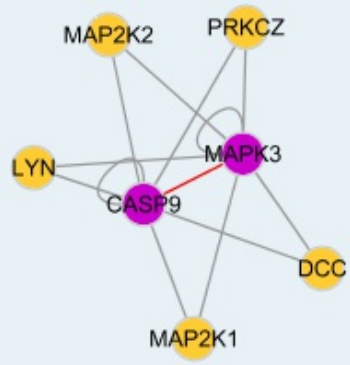
(caspase) family. Sequential activation of caspases plays a central role in the execution-phase of cell apoptosis. Caspases exist as inactive proenzymes which undergo proteolytic processing at conserved aspartic residues to produce two subunits, large and small, that dimerize to form the active enzyme. This protein is processed by caspase APAF1; this step is thought to be one of the earliest in the caspase activation cascade. Alternative splicing results in two transcript variants which encode different isoforms. [provided by RefSeq]

Other ICE-like apoptotic protease
Designations: 6,OTTHUMP00000002322,OTTHUMP00000002323,OTTHUMP000000044594,apoptotic protease MCH-6,apoptotic protease activating factor 3,caspase 9,caspase 9, apoptosis-related cysteine protease

Interactome 1



Interactome 2



[服務條款](#) | [隱私權政策](#) | [著作及商標](#) | [網站地圖](#)

©2016 亞諾法生技股份有限公司 Abnova Corporation. 版權所有.