



SZABO SCANDIC

Part of Europa Biosite

Produktinformation



Forschungsprodukte & Biochemikalien



Zellkultur & Verbrauchsmaterial



Diagnostik & molekulare Diagnostik



Laborgeräte & Service

Weitere Information auf den folgenden Seiten!
See the following pages for more information!



Lieferung & Zahlungsart

siehe unsere [Liefer- und Versandbedingungen](#)

Zuschläge

- Mindermengenzuschlag
- Trockeneiszuschlag
- Gefahrgutzuschlag
- Expressversand

SZABO-SCANDIC HandelsgmbH

Quellenstraße 110, A-1100 Wien

T. +43(0)1 489 3961-0

F. +43(0)1 489 3961-7

mail@szabo-scandic.com

www.szabo-scandic.com

[linkedin.com/company/szaboscandic](https://www.linkedin.com/company/szaboscandic) 

MAPK3 & RPS6KA2 Protein Protein Interaction Antibody Pair

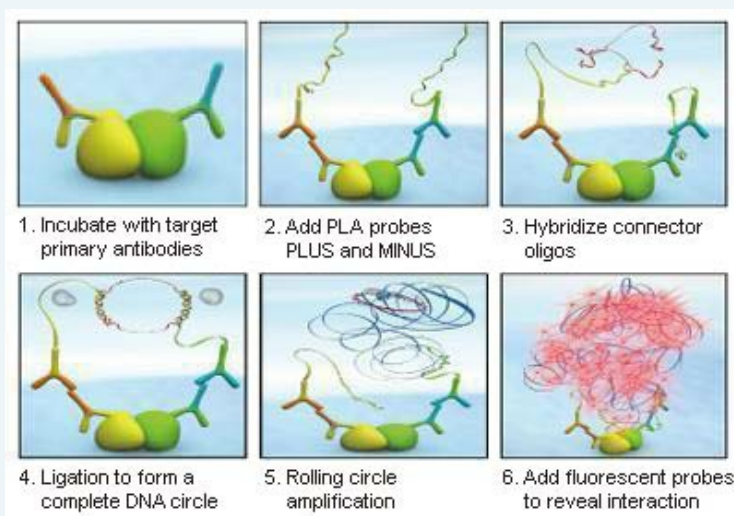
Catalog # : DI0345

規格 : [1 Set]

List All

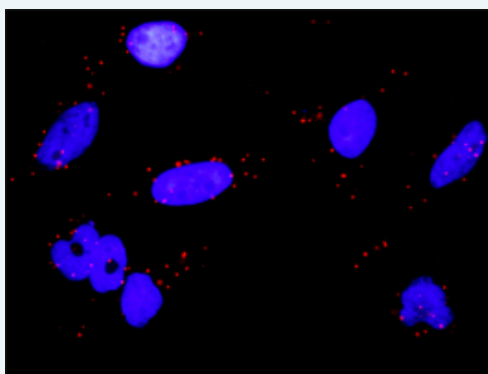
Specification

Product Description: This protein protein interaction antibody pair set comes with two antibodies to detect the protein-protein interaction, one against the MAPK3 protein, and the other against the RPS6KA2 protein for use in *in situ* Proximity Ligation Assay. See Publication Reference below.



Reactivity: Human

Quality Control Testing: Protein protein interaction immunofluorescence result.



Representative image of Proximity Ligation Assay of protein-protein interactions between MAPK3 and RPS6KA2. HeLa cells were stained with anti-MAPK3 rabbit purified polyclonal antibody 1:1200 and anti-RPS6KA2 mouse monoclonal antibody 1:50. Each red dot represents the detection of protein-protein interaction complex. The images were analyzed using an optimized freeware ([BlobFinder](#)) download from The Centre for Image Analysis at Uppsala University.

Supplied Product: Antibody pair set content:
 1. MAPK3 rabbit purified polyclonal antibody (20 ug)
 2. RPS6KA2 mouse monoclonal antibody (40 ug)
 *Reagents are sufficient for at least 30-50 assays using recommended protocols.

Storage Instruction: Store reagents of the antibody pair set at -20°C or lower. Please aliquot to avoid repeated freeze thaw cycle. Reagents should be returned to -

Application Image

In situ Proximity Ligation Assay (Cell)

20°C storage immediately after use.

MSDS:  [Download](#)

Publication Reference

1. [An analysis of protein-protein interactions in cross-talk pathways reveals CRKL as a novel prognostic marker in hepatocellular carcinoma.](#)
Liu CH, Chen TC, Chau GY, Jan YH, Chen CH, Hsu CN, Lin KT, Juang YL, Lu PJ, Cheng HC, Chen MH, Chang CF, Ting YS, Kao CY, Hsiao M, Huang CY. Mol Cell Proteomics. 2013 Feb 8. [Epub ahead of print]

Applications

In situ Proximity Ligation Assay (Cell)

[MAPK3](#) [RPS6KA2](#)

Gene Information

Entrez GeneID: [5595](#)

Gene Name: MAPK3

Gene Alias: ERK1,HS44KDAP,HUMKER1A,MGC20180,P44ERK1,P44MAPK,PRKM3

Gene Description: mitogen-activated protein kinase 3

Omim ID: [601795](#)

Gene Ontology: [Hyperlink](#)

Gene Summary: The protein encoded by this gene is a member of the MAP kinase family. MAP kinases, also known as extracellular signal-regulated kinases (ERKs), act in a signaling cascade that regulates various cellular processes such as proliferation, differentiation, and cell cycle progression in response to a variety of extracellular signals. This kinase is activated by upstream kinases, resulting in its translocation to the nucleus where it phosphorylates nuclear targets. Alternatively spliced transcript variants encoding different protein isoforms have been described. [provided by RefSeq]

Other Designations: OTTHUMP00000174538,OTTHUMP00000174540,extracellular signal-regulated kinase 1,extracellular signal-related kinase 1

Gene Information

Entrez GeneID: [6196](#)

Gene Name: RPS6KA2

Gene Alias: HU-2,MAPKAPK1C,RSK,RSK3,S6K-alpha,S6K-alpha2,p90-RSK3,pp90RSK3

Gene Description: ribosomal protein S6 kinase, 90kDa, polypeptide 2

Omim ID: [601685](#)

Gene Ontology: [Hyperlink](#)

Gene Summary: This gene encodes a member of the RSK (ribosomal S6 kinase) family of serine/threonine kinases. This kinase contains 2 non-identical kinase catalytic domains and phosphorylates various substrates, including members of the mitogen-activated kinase (MAPK) signalling pathway.

