



SZABO SCANDIC

Part of Europa Biosite

Produktinformation



Forschungsprodukte & Biochemikalien



Zellkultur & Verbrauchsmaterial



Diagnostik & molekulare Diagnostik



Laborgeräte & Service

Weitere Information auf den folgenden Seiten!
See the following pages for more information!



Lieferung & Zahlungsart

siehe unsere [Liefer- und Versandbedingungen](#)

Zuschläge

- Mindermengenzuschlag
- Trockeneiszuschlag
- Gefahrgutzuschlag
- Expressversand

SZABO-SCANDIC HandelsgmbH

Quellenstraße 110, A-1100 Wien

T. +43(0)1 489 3961-0

F. +43(0)1 489 3961-7

mail@szabo-scandic.com

www.szabo-scandic.com

[linkedin.com/company/szaboscandic](https://www.linkedin.com/company/szaboscandic) 

FLT1 & PIK3R1 Protein Protein Interaction Antibody Pair

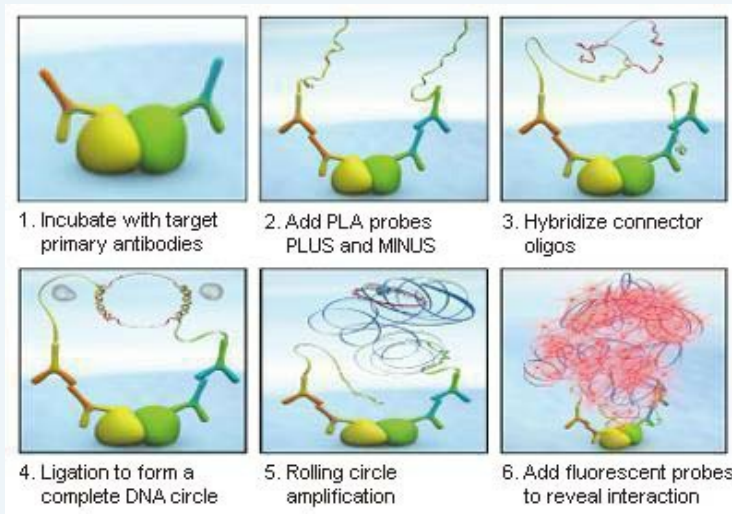
Catalog # : DI0386

規格 : [1 Set]

List All

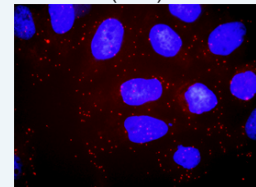
Specification

Product Description: This protein protein interaction antibody pair set comes with two antibodies to detect the protein-protein interaction, one against the FLT1 protein, and the other against the PIK3R1 protein for use in *in situ* Proximity Ligation Assay. See Publication Reference below.



Application Image

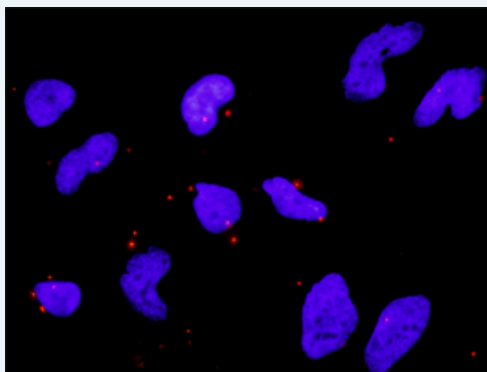
In situ Proximity Ligation Assay (Cell)



[enlarge](#)

Reactivity: Human

Quality Control Testing: Protein protein interaction immunofluorescence result.



Representative image of Proximity Ligation Analysis of protein-protein interactions between FLT1 and PIK3R1. HeLa cells were stained with anti-FLT1 rabbit purified polyclonal antibody 1:1200 and anti-PIK3R1 mouse monoclonal antibody 1:50. Each red dot represents the detection of protein-protein interaction complex. The images were analyzed using an optimized freeware ([BlobFinder](#)) download from The Centre for Image Analysis at Uppsala University.

Supplied Product: Antibody pair set content:
 1. FLT1 rabbit purified polyclonal antibody (20 ug)
 2. PIK3R1 mouse monoclonal antibody (40 ug)
 *Reagents are sufficient for at least 30-50 assays using recommended protocols.

Storage Instruction: Store reagents of the antibody pair set at -20°C or lower. Please aliquot to avoid repeated freeze thaw cycle. Reagents should be returned to -

20°C storage immediately after use.

MSDS:

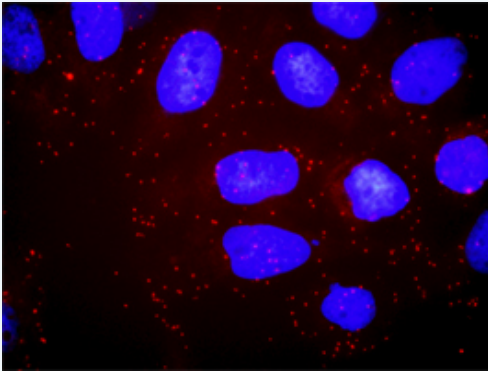
 [Download](#)

Publication Reference

1. [An analysis of protein-protein interactions in cross-talk pathways reveals CRKL as a novel prognostic marker in hepatocellular carcinoma.](#)
Liu CH, Chen TC, Chau GY, Jan YH, Chen CH, Hsu CN, Lin KT, Juang YL, Lu PJ, Cheng HC, Chen MH, Chang CF, Ting YS, Kao CY, Hsiao M, Huang CY. Mol Cell Proteomics. 2013 Feb 8. [Epub ahead of print]

Applications

In situ Proximity Ligation Assay (Cell)



Representative image of Proximity Ligation Assay of protein-protein interactions between FLT1 and PIK3R1. Huh7 cells were stained with anti-FLT1 rabbit purified polyclonal antibody 1:1200 and anti-PIK3R1 mouse monoclonal antibody 1:50. Each red dot represents the detection of protein-protein interaction complex, and nuclei were counterstained with DAPI (blue).

[FLT1](#) [PIK3R1](#)

Gene Information

Entrez GeneID: [2321](#)

Gene Name: FLT1

Gene Alias: FLT, VEGFR1

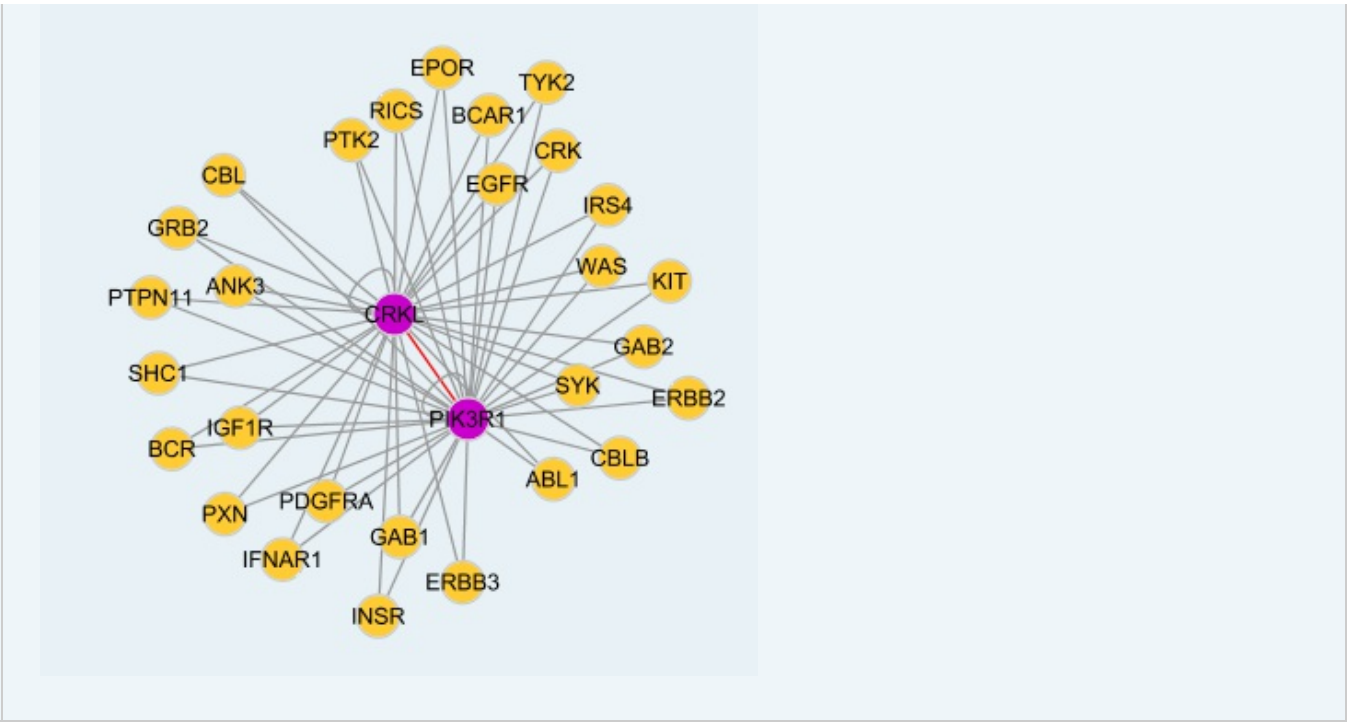
Gene Description: fms-related tyrosine kinase 1 (vascular endothelial growth factor/vascular permeability factor receptor)

Omim ID: [165070](#)

Gene Ontology: [Hyperlink](#)

Gene Summary: This gene encodes a member of the vascular endothelial growth factor receptor (VEGFR) family. VEGFR family members are receptor tyrosine kinases (RTKs) which contain an extracellular ligand-binding region with seven immunoglobulin (Ig)-like domains, a transmembrane segment, and a tyrosine kinase (TK) domain within the cytoplasmic domain. This protein binds to VEGFR-A, VEGFR-B and placental growth factor and plays an important role in angiogenesis and vasculogenesis. Expression of this receptor is found in vascular endothelial cells, placental trophoblast cells and peripheral blood monocytes. Multiple transcript variants encoding different isoforms have been found for this gene. Isoforms include a full-length transmembrane receptor isoform and shortened, soluble isoforms. The soluble isoforms are associated with the onset of pre-eclampsia

Other Designations: fms-related tyrosine kinase 1, soluble VEGF receptor 1-14, soluble VEGFR1 variant 2, soluble VEGFR1 variant 21, vascular endothelial growth factor/vascular permeability factor receptor



[服務條款](#) | [隱私權政策](#) | [著作及商標](#) | [網站地圖](#)

©2016 亞諾法生技股份有限公司 Abnova Corporation. 版權所有.