



SZABO SCANDIC

Part of Europa Biosite

Produktinformation



Forschungsprodukte & Biochemikalien



Zellkultur & Verbrauchsmaterial



Diagnostik & molekulare Diagnostik



Laborgeräte & Service

Weitere Information auf den folgenden Seiten!
See the following pages for more information!



Lieferung & Zahlungsart

siehe unsere [Liefer- und Versandbedingungen](#)

Zuschläge

- Mindermengenzuschlag
- Trockeneiszuschlag
- Gefahrgutzuschlag
- Expressversand

SZABO-SCANDIC HandelsgmbH

Quellenstraße 110, A-1100 Wien

T. +43(0)1 489 3961-0

F. +43(0)1 489 3961-7

mail@szabo-scandic.com

www.szabo-scandic.com

[linkedin.com/company/szaboscandic](https://www.linkedin.com/company/szaboscandic)

PIK3R1 & SHC1 Protein Protein Interaction Antibody Pair

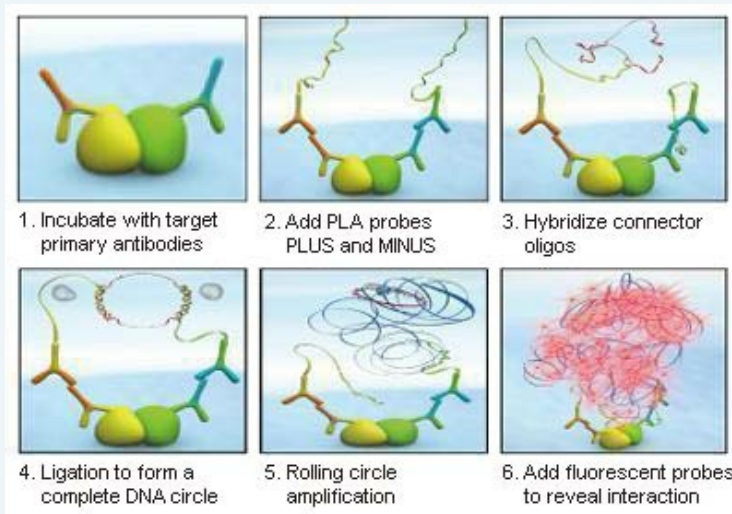
Catalog # : DI0393

規格 : [1 Set]

List All

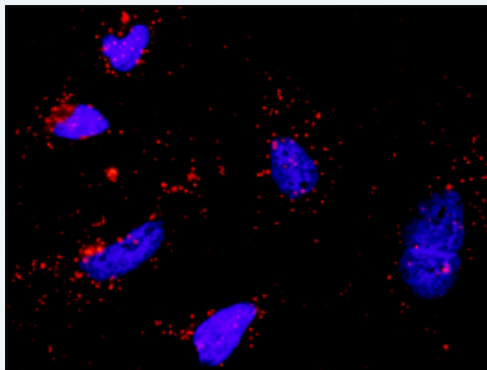
Specification

Product Description: This protein protein interaction antibody pair set comes with two antibodies to detect the protein-protein interaction, one against the PIK3R1 protein, and the other against the SHC1 protein for use in *in situ* Proximity Ligation Assay. See Publication Reference below.



Reactivity: Human

Quality Control Testing: Protein protein interaction immunofluorescence result.



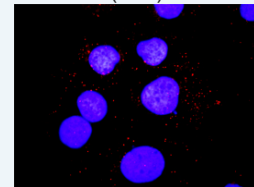
Representative image of Proximity Ligation Assay of protein-protein interactions between PIK3R1 and SHC1. HeLa cells were stained with anti-PIK3R1 rabbit purified polyclonal antibody 1:1200 and anti-SHC1 mouse monoclonal antibody 1:50. Each red dot represents the detection of protein-protein interaction complex. The images were analyzed using an optimized freeware ([BlobFinder](#)) download from The Centre for Image Analysis at Uppsala University.

Supplied Product: Antibody pair set content:
 1. PIK3R1 rabbit purified polyclonal antibody (20 ug)
 2. SHC1 mouse monoclonal antibody (40 ug)
 *Reagents are sufficient for at least 30-50 assays using recommended protocols.

Storage Instruction: Store reagents of the antibody pair set at -20°C or lower. Please aliquot to avoid repeated freeze thaw cycle. Reagents should be returned to -

Application Image

In situ Proximity Ligation Assay (Cell)



[enlarge](#)

20°C storage immediately after use.

MSDS:

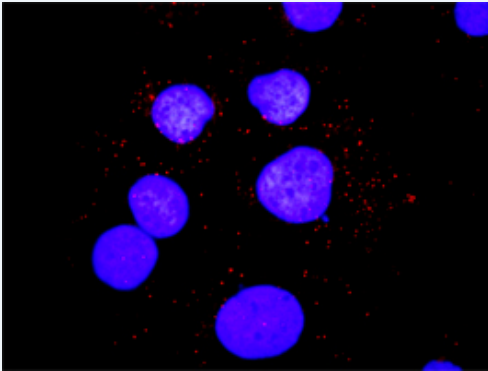
 [Download](#)

Publication Reference

1. [An analysis of protein-protein interactions in cross-talk pathways reveals CRKL as a novel prognostic marker in hepatocellular carcinoma.](#)
Liu CH, Chen TC, Chau GY, Jan YH, Chen CH, Hsu CN, Lin KT, Juang YL, Lu PJ, Cheng HC, Chen MH, Chang CF, Ting YS, Kao CY, Hsiao M, Huang CY. Mol Cell Proteomics. 2013 Feb 8. [Epub ahead of print]

Applications

In situ Proximity Ligation Assay (Cell)



Representative image of Proximity Ligation Assay of protein-protein interactions between PIK3R1 and SHC1. Huh7 cells were stained with anti-PIK3R1 rabbit purified polyclonal antibody 1:1200 and anti-SHC1 mouse monoclonal antibody 1:50. Each red dot represents the detection of protein-protein interaction complex, and nuclei were counterstained with DAPI (blue).

[PIK3R1](#) [SHC1](#)

Gene Information

Entrez GeneID: [5295](#)

Gene Name: PIK3R1

Gene Alias: GRB1,p85,p85-ALPHA

Gene Description: phosphoinositide-3-kinase, regulatory subunit 1 (alpha)

Omim ID: [171833](#)

Gene Ontology: [Hyperlink](#)

Gene Summary: Phosphatidylinositol 3-kinase phosphorylates the inositol ring of phosphatidylinositol at the 3-prime position. The enzyme comprises a 110 kD catalytic subunit and a regulatory subunit of either 85, 55, or 50 kD. This gene encodes the 85 kD regulatory subunit. Phosphatidylinositol 3-kinase plays an important role in the metabolic actions of insulin, and a mutation in this gene has been associated with insulin resistance. Alternative splicing of this gene results in three transcript variants encoding different isoforms. [provided by RefSeq]

Other Designations: phosphatidylinositol 3-kinase, regulatory subunit, polypeptide 1 (p85 alpha), phosphatidylinositol 3-kinase, regulatory, 1, phosphatidylinositol 3-kinase-associated p-85 alpha, phosphoinositide-3-kinase, regulatory subunit 1 (p85 alpha), phosphoinositide-3-ki

Gene Information

Entrez GeneID: [6464](#)

Gene Name: SHC1

Gene Alias: FLJ26504,SHC,SHCA

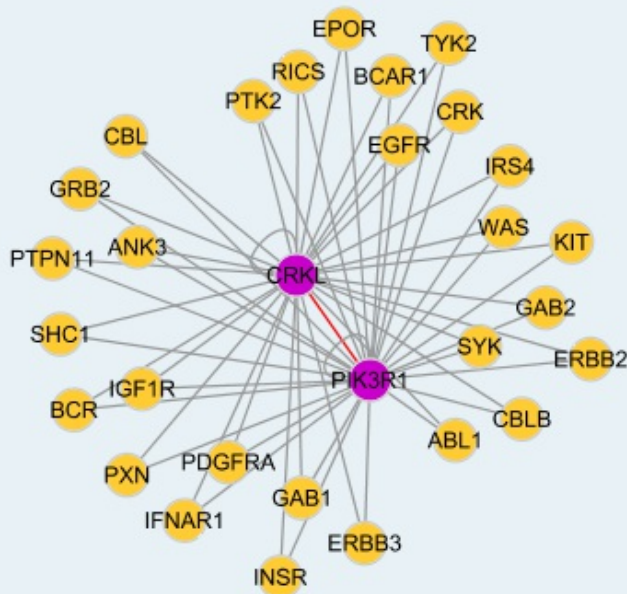
Gene Description: SHC (Src homology 2 domain containing) transforming protein 1

Omim ID: [600560](#)

Gene Ontology: [Hyperlink](#)

Other Designations: OTTHUMP00000035409,OTTHUMP00000035471,SHC (Src homology 2 domain-containing) transforming protein 1,SHC-transforming protein 1

Interactome



[服務條款](#) | [隱私權政策](#) | [著作及商標](#) | [網站地圖](#)

©2016 亞諾法生技股份有限公司 Abnova Corporation. 版權所有.