



SZABO SCANDIC

Part of Europa Biosite

Produktinformation



Forschungsprodukte & Biochemikalien



Zellkultur & Verbrauchsmaterial



Diagnostik & molekulare Diagnostik



Laborgeräte & Service

Weitere Information auf den folgenden Seiten!
See the following pages for more information!



Lieferung & Zahlungsart

siehe unsere [Liefer- und Versandbedingungen](#)

Zuschläge

- Mindermengenzuschlag
- Trockeneiszuschlag
- Gefahrgutzuschlag
- Expressversand

SZABO-SCANDIC HandelsgmbH

Quellenstraße 110, A-1100 Wien

T. +43(0)1 489 3961-0

F. +43(0)1 489 3961-7

mail@szabo-scandic.com

www.szabo-scandic.com

[linkedin.com/company/szaboscandic](https://www.linkedin.com/company/szaboscandic) 

KIT & PLCG1 Protein Protein Interaction Antibody Pair

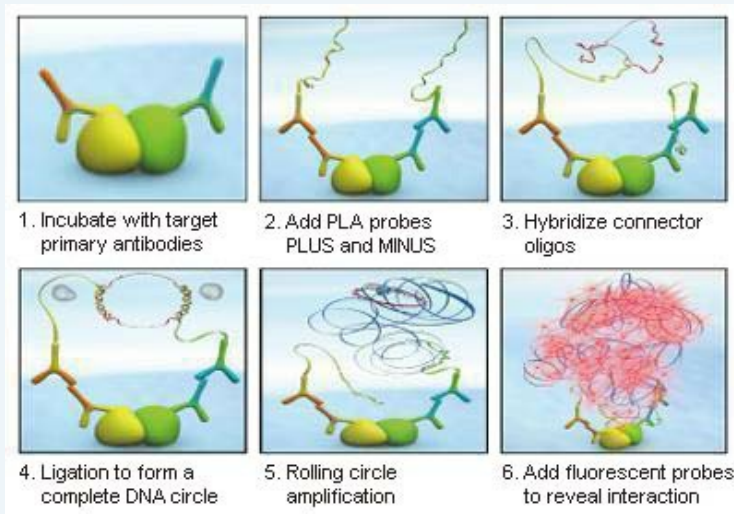
Catalog # : DI0423

規格 : [1 Set]

List All

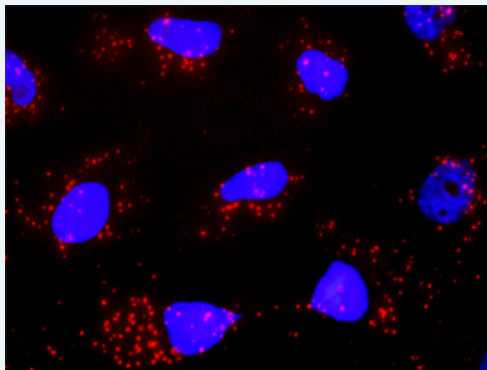
Specification

Product Description: This protein protein interaction antibody pair set comes with two antibodies to detect the protein-protein interaction, one against the KIT protein, and the other against the PLCG1 protein for use in *in situ* Proximity Ligation Assay. See Publication Reference below.



Reactivity: Human

Quality Control Testing: Protein protein interaction immunofluorescence result.



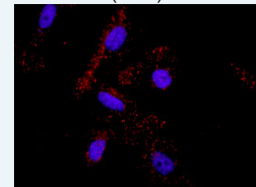
Representative image of Proximity Ligation Assay of protein-protein interactions between KIT and PLCG1. HeLa cells were stained with anti-KIT rabbit purified polyclonal antibody 1:1200 and anti-PLCG1 mouse monoclonal antibody 1:50. Each red dot represents the detection of protein-protein interaction complex. The images were analyzed using an optimized freeware ([BlobFinder](#)) download from The Centre for Image Analysis at Uppsala University.

Supplied Product: Antibody pair set content:
 1. KIT rabbit purified polyclonal antibody (20 ug)
 2. PLCG1 mouse monoclonal antibody (40 ug)
 *Reagents are sufficient for at least 30-50 assays using recommended protocols.

Storage Instruction: Store reagents of the antibody pair set at -20°C or lower. Please aliquot to avoid repeated freeze thaw cycle. Reagents should be returned to -

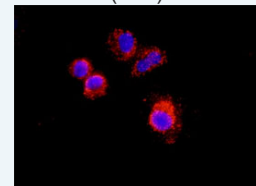
Application Image

In situ Proximity Ligation Assay (Cell)



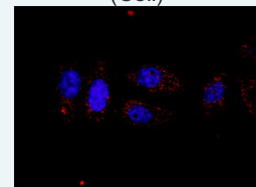
[enlarge](#)

In situ Proximity Ligation Assay (Cell)



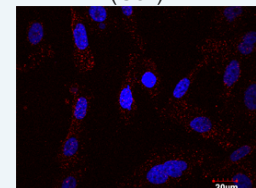
[enlarge](#)

In situ Proximity Ligation Assay (Cell)



[enlarge](#)

In situ Proximity Ligation Assay (Cell)



[enlarge](#)

20°C storage immediately after use.

MSDS:

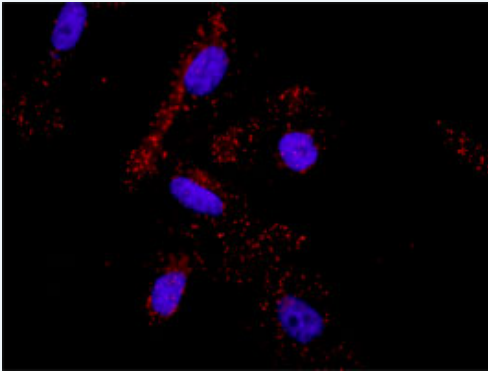
 [Download](#)

Publication Reference

1. [An analysis of protein-protein interactions in cross-talk pathways reveals CRKL as a novel prognostic marker in hepatocellular carcinoma.](#)
Liu CH, Chen TC, Chau GY, Jan YH, Chen CH, Hsu CN, Lin KT, Juang YL, Lu PJ, Cheng HC, Chen MH, Chang CF, Ting YS, Kao CY, Hsiao M, Huang CY. Mol Cell Proteomics. 2013 Feb 8. [Epub ahead of print]
-

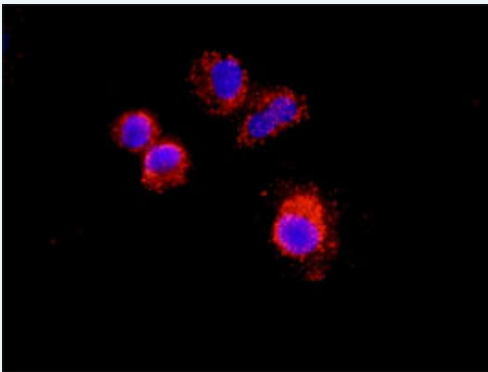
Applications

In situ Proximity Ligation Assay (Cell)



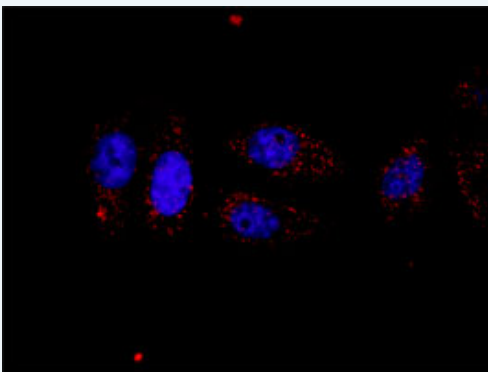
Representative image of Proximity Ligation Assay of protein-protein interactions between KIT and PLCG1. PC-3 cells were stained with anti-KIT rabbit purified polyclonal antibody 1:100 and anti-PLCG1 mouse monoclonal antibody 1:50. Each red dot represents the detection of protein-protein interaction complex, and nuclei were counterstained with DAPI (blue).

In situ Proximity Ligation Assay (Cell)



Representative image of Proximity Ligation Assay of protein-protein interactions between KIT and PLCG1. A-549 cells were stained with anti-KIT rabbit purified polyclonal antibody 1:100 and anti-PLCG1 mouse monoclonal antibody 1:50. Each red dot represents the detection of protein-protein interaction complex, and nuclei were counterstained with DAPI (blue).

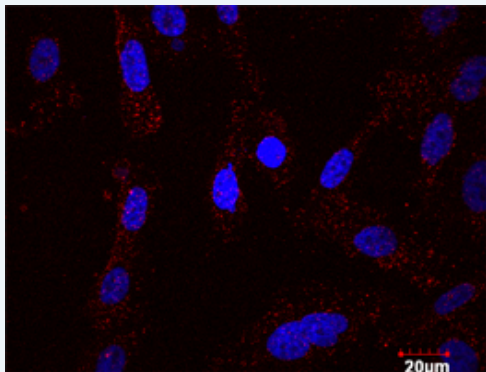
In situ Proximity Ligation Assay (Cell)



Representative image of Proximity Ligation Assay of protein-protein interactions between KIT and PLCG1. HT-29 cells were stained with anti-KIT rabbit purified polyclonal antibody

1:100 and anti-PLCG1 mouse monoclonal antibody 1:50. Each red dot represents the detection of protein-protein interaction complex, and nuclei were counterstained with DAPI (blue).

***In situ* Proximity Ligation Assay (Cell)**



Confocal microscopy image of Proximity Ligation Assay of protein-protein interactions between KIT and PLCG1. PC-3 cells were stained with anti-KIT rabbit purified polyclonal antibody 1:100 and anti-PLCG1 mouse monoclonal antibody 1:50. Each red dot represents the detection of protein-protein interaction complex, and nuclei were counterstained with DAPI (blue).

KIT PLCG1

Gene Information

Entrez GeneID: [3815](#)

Gene Name: KIT

Gene Alias: C-Kit,CD117,PBT,SCFR

Gene Description: v-kit Hardy-Zuckerman 4 feline sarcoma viral oncogene homolog

Omim ID: [164920](#), [172800](#), [273300](#), [601626](#), [606764](#)

Gene Ontology: [Hyperlink](#)

Gene Summary: This gene encodes the human homolog of the proto-oncogene c-kit. C-kit was first identified as the cellular homolog of the feline sarcoma viral oncogene v-kit. This protein is a type 3 transmembrane receptor for MGF (mast cell growth factor, also known as stem cell factor). Mutations in this gene are associated with gastrointestinal stromal tumors, mast cell disease, acute myelogenous leukemia, and piebaldism. Multiple transcript variants encoding different isoforms have been found for this gene. [provided by RefSeq]

Other Designations: mast/stem cell growth factor receptor,proto-oncogene tyrosine-protein kinase Kit,soluble KIT variant 1

Gene Information

Entrez GeneID: [5335](#)

Gene Name: PLCG1

Gene Alias: PLC-II,PLC1,PLC148,PLCgamma1

Gene Description: phospholipase C, gamma 1

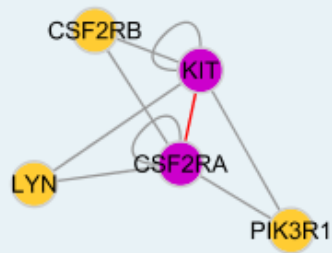
Omim ID: [172420](#)

Gene Ontology: [Hyperlink](#)

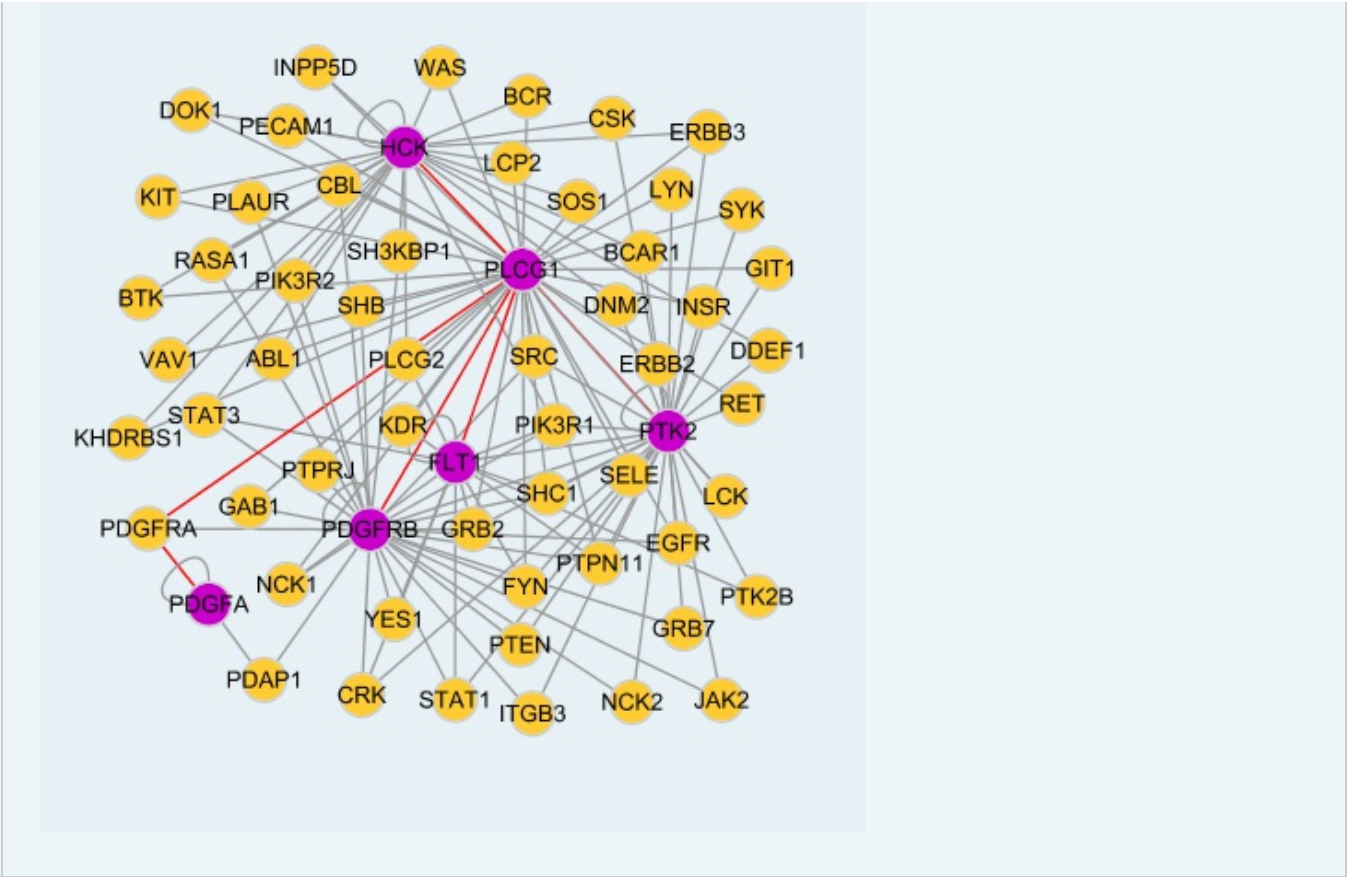
Gene Summary: The protein encoded by this gene catalyzes the formation of inositol 1,4,5-trisphosphate and diacylglycerol from phosphatidylinositol 4,5-bisphosphate. This reaction uses calcium as a cofactor and plays an important role in the intracellular transduction of receptor-mediated tyrosine kinase activators. For example, when activated by SRC, the encoded protein causes the Ras guanine nucleotide exchange factor RasGRP1 to translocate to the Golgi, where it activates Ras. Also, this protein has been shown to be a major substrate for heparin-binding growth factor 1 (acidic fibroblast growth factor)-activated tyrosine kinase. Two transcript variants encoding different isoforms have been found for this gene. [provided by RefSeq]

Other Designations: 1-phosphatidyl-D-myo-inositol-4,5-bisphosphate, 1-phosphatidylinositol-4,5-bisphosphate phosphodiesterase gamma
1,OTTHUMP00000031787,OTTHUMP00000178982,PLC-gamma-1,inositoltrisphosphohydrolase,monophosphatidylinositol phosphodiesterase,phosphatidylinositol

Interactome 1



Interactome 2



[服務條款](#) | [隱私權政策](#) | [著作及商標](#) | [網站地圖](#)

©2016 亞諾法生技股份有限公司 Abnova Corporation. 版權所有.