



# SZABO SCANDIC

Part of Europa Biosite

## Produktinformation



Forschungsprodukte & Biochemikalien



Zellkultur & Verbrauchsmaterial



Diagnostik & molekulare Diagnostik



Laborgeräte & Service

Weitere Information auf den folgenden Seiten!  
See the following pages for more information!



### Lieferung & Zahlungsart

siehe unsere [Liefer- und Versandbedingungen](#)

### Zuschläge

- Mindermengenzuschlag
- Trockeneiszuschlag
- Gefahrgutzuschlag
- Expressversand

### SZABO-SCANDIC HandelsgmbH

Quellenstraße 110, A-1100 Wien

T. +43(0)1 489 3961-0

F. +43(0)1 489 3961-7

[mail@szabo-scandic.com](mailto:mail@szabo-scandic.com)

[www.szabo-scandic.com](http://www.szabo-scandic.com)

[linkedin.com/company/szaboscandic](https://www.linkedin.com/company/szaboscandic) 

## ETS1 & NFKB1 Protein Protein Interaction Antibody Pair

Catalog # : DI0482

規格 : [ 1 Set ]

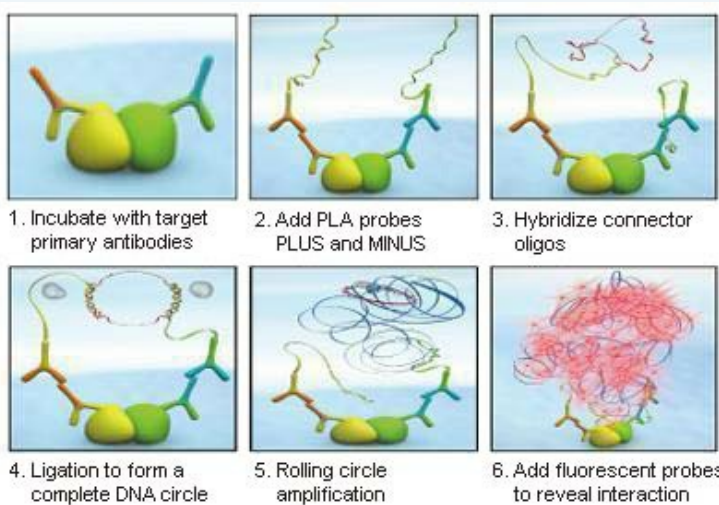
[List All](#)

### Specification

**Product Description:** This protein protein interaction antibody pair set comes with two antibodies to detect the protein-protein interaction, one against the ETS1 protein, and the other against the NFKB1 protein for use in *in situ* Proximity Ligation Assay. See Publication Reference below.

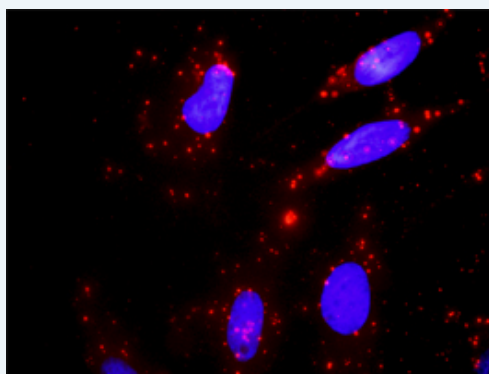
### Application Image

*In situ* Proximity Ligation Assay (Cell)



**Reactivity:** Human

**Quality Control Testing:** Protein protein interaction immunofluorescence result.



Representative image of Proximity Ligation Assay of protein-protein interactions between ETS1 and NFKB1. HeLa cells were stained with anti-ETS1 rabbit purified polyclonal antibody 1:1200 and anti-NFKB1 mouse monoclonal antibody 1:50. Each red dot represents the detection of protein-protein interaction complex. The images were analyzed using an optimized freeware ([BlobFinder](#)) download from The Centre for Image Analysis at Uppsala University.

**Supplied Product:** Antibody pair set content:  
 1. ETS1 rabbit purified polyclonal antibody (20 ug)  
 2. NFKB1 mouse monoclonal antibody (40 ug)  
 \*Reagents are sufficient for at least 30-50 assays using recommended protocols.

**Storage Instruction:** Store reagents of the antibody pair set at -20°C or lower. Please aliquot to avoid repeated freeze thaw cycle. Reagents should be returned to -

**MSDS:**



**Publication Reference**

1. An analysis of protein-protein interactions in cross-talk pathways reveals CRKL as a novel prognostic marker in hepatocellular carcinoma. Liu CH, Chen TC, Chau GY, Jan YH, Chen CH, Hsu CN, Lin KT, Juang YL, Lu PJ, Cheng HC, Chen MH, Chang CF, Ting YS, Kao CY, Hsiao M, Huang CY. Mol Cell Proteomics. 2013 Feb 8. [Epub ahead of print]

**Applications**

***In situ* Proximity Ligation Assay (Cell)**

ETS1 NFKB1

**Gene Information**

**Entrez GeneID:** 2113

**Gene Name:** ETS1

**Gene Alias:** ETS-1,EWSR2,FLJ10768

**Gene Description:** v-ets erythroblastosis virus E26 oncogene homolog 1 (avian)

**Omim ID:** 164720

**Gene Ontology:** [Hyperlink](#)

**Gene Summary:** ETS transcriptions factors, such as ETS1, regulate numerous genes and are involved in stem cell development, cell senescence and death, and tumorigenesis. The conserved ETS domain within these proteins is a winged helix-turn-helix DNA-binding domain that recognizes the core consensus DNA sequence GGAA/T of target genes (Dwyer et al., 2007 [PubMed 17986575]).[supplied by OMIM]

**Other Designations:** Avian erythroblastosis virus E26 (v-ets) oncogene homolog-1,ets protein,v-ets avian erythroblastosis virus E2 oncogene homolog 1,v-ets avian erythroblastosis virus E26 oncogene homolog 1,v-ets erythroblastosis virus E26 oncogene homolog 1

**Gene Information**

**Entrez GeneID:** 4790

**Gene Name:** NFKB1

**Gene Alias:** DKFZp686C01211,EBP-1,KBF1,MGC54151,NF-kappa-B,NFKB-p105,NFKB-p50,p105,p50

**Gene Description:** nuclear factor of kappa light polypeptide gene enhancer in B-cells 1

**Omim ID:** 164011

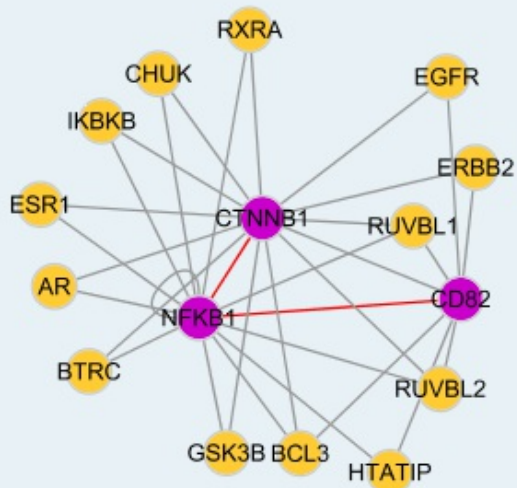
**Gene Ontology:** [Hyperlink](#)

**Gene Summary:** This gene encodes a 105 kD protein which can undergo cotranslational processing by the 26S proteasome to produce a 50 kD protein. The 105 kD protein is a Rel protein-specific transcription inhibitor and the 50 kD protein is a DNA binding subunit of the NF-kappa-B (NFKB) protein complex. NFKB is a transcription regulator that is activated by various

intra- and extra-cellular stimuli such as cytokines, oxidant-free radicals, ultraviolet irradiation, and bacterial or viral products. Activated NFkB translocates into the nucleus and stimulates the expression of genes involved in a wide variety of biological functions. Inappropriate activation of NFkB has been associated with a number of inflammatory diseases while persistent inhibition of NFkB leads to inappropriate immune cell development or delayed cell growth. Two transcript variants encoding different isoforms have been found for this gene. [provided by RefSeq

**Other** DNA binding factor KBF1,NF-kappabeta,nuclear factor NF-kappa-B p50  
**Designations:** subunit,nuclear factor kappa-B DNA binding subunit,nuclear factor kappa-B, subunit 1

#### Interactome



[服務條款](#) | [隱私權政策](#) | [著作及商標](#) | [網站地圖](#)

©2016 亞諾法生技股份有限公司 Abnova Corporation. 版權所有.