



# SZABO SCANDIC

Part of Europa Biosite

## Produktinformation



Forschungsprodukte & Biochemikalien



Zellkultur & Verbrauchsmaterial



Diagnostik & molekulare Diagnostik



Laborgeräte & Service

Weitere Information auf den folgenden Seiten!  
See the following pages for more information!



### Lieferung & Zahlungsart

siehe unsere [Liefer- und Versandbedingungen](#)

### Zuschläge

- Mindermengenzuschlag
- Trockeneiszuschlag
- Gefahrgutzuschlag
- Expressversand

### SZABO-SCANDIC HandelsgmbH

Quellenstraße 110, A-1100 Wien

T. +43(0)1 489 3961-0

F. +43(0)1 489 3961-7

[mail@szabo-scandic.com](mailto:mail@szabo-scandic.com)

[www.szabo-scandic.com](http://www.szabo-scandic.com)

[linkedin.com/company/szaboscandic](https://www.linkedin.com/company/szaboscandic) 

## RUNX1T1 & HDAC1 Protein Protein Interaction Antibody Pair

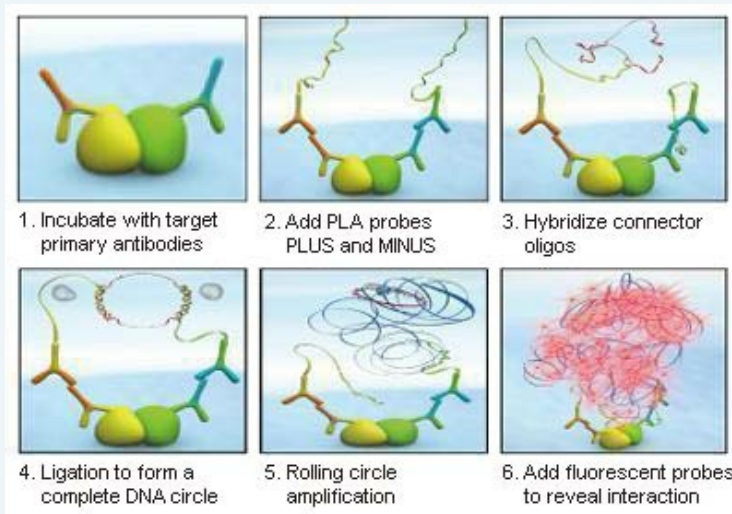
Catalog # : DI0488

規格 : [ 1 Set ]

List All

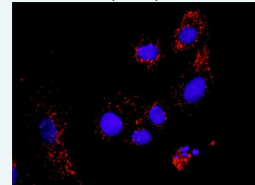
### Specification

**Product Description:** This protein protein interaction antibody pair set comes with two antibodies to detect the protein-protein interaction, one against the RUNX1T1 protein, and the other against the HDAC1 protein for use in *in situ* Proximity Ligation Assay. See Publication Reference below.



### Application Image

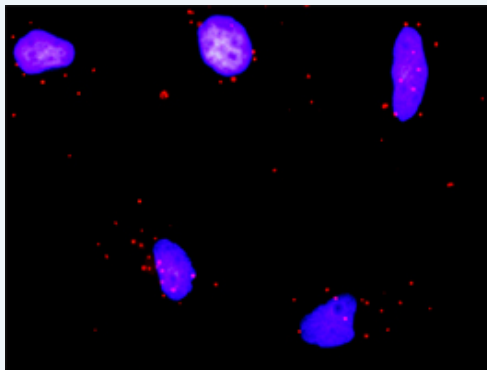
*In situ* Proximity Ligation Assay (Cell)



[enlarge](#)

**Reactivity:** Human

**Quality Control Testing:** Protein protein interaction immunofluorescence result.



Representative image of Proximity Ligation Assay of protein-protein interactions between RUNX1T1 and HDAC1. HeLa cells were stained with anti-RUNX1T1 rabbit purified polyclonal antibody 1:1200 and anti-HDAC1 mouse monoclonal antibody 1:50. Each red dot represents the detection of protein-protein interaction complex. The images were analyzed using an optimized freeware ([BlobFinder](#)) download from The Centre for Image Analysis at Uppsala University.

**Supplied Product:** Antibody pair set content:  
 1. RUNX1T1 rabbit purified polyclonal antibody (20 ug)  
 2. HDAC1 mouse monoclonal antibody (40 ug)  
 \*Reagents are sufficient for at least 30-50 assays using recommended protocols.

**Storage Instruction:** Store reagents of the antibody pair set at -20°C or lower. Please aliquot to avoid repeated freeze thaw cycle. Reagents should be returned to -

20°C storage immediately after use.

MSDS:

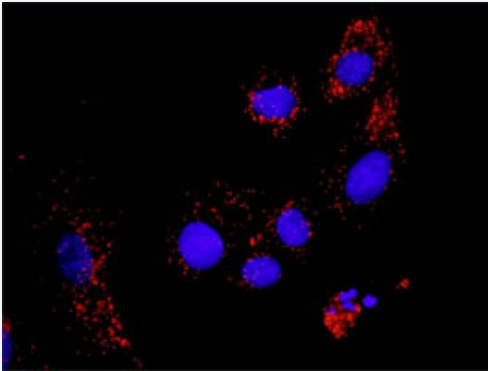
 [Download](#)

## Publication Reference

1. [An analysis of protein-protein interactions in cross-talk pathways reveals CRKL as a novel prognostic marker in hepatocellular carcinoma.](#)  
Liu CH, Chen TC, Chau GY, Jan YH, Chen CH, Hsu CN, Lin KT, Juang YL, Lu PJ, Cheng HC, Chen MH, Chang CF, Ting YS, Kao CY, Hsiao M, Huang CY. Mol Cell Proteomics. 2013 Feb 8. [Epub ahead of print]

## Applications

### *In situ* Proximity Ligation Assay (Cell)



Representative image of Proximity Ligation Assay of protein-protein interactions between RUNX1T1 and HDAC1. A-549 cells were stained with anti-RUNX1T1 rabbit purified polyclonal antibody 1:100 and anti-HDAC1 mouse monoclonal antibody 1:50. Each red dot represents the detection of protein-protein interaction complex, and nuclei were counterstained with DAPI (blue).

[RUNX1T1](#) [HDAC1](#)

## Gene Information

Entrez GeneID: [862](#)

Gene Name: RUNX1T1

Gene Alias: AML1T1,CBFA2T1,CDR,ETO,MGC2796,MTG8,MTG8b,ZMYND2

Gene Description: runt-related transcription factor 1; translocated to, 1 (cyclin D-related)

Omim ID: [133435](#)

Gene Ontology: [Hyperlink](#)

**Gene Summary:** The protein encoded by this gene is a putative zinc finger transcription factor and oncoprotein. In acute myeloid leukemia, especially in the M2 subtype, the t(8;21)(q22;q22) translocation is one of the most frequent karyotypic abnormalities. The translocation produces a chimeric gene made up of the 5'-region of the RUNX1 gene fused to the 3'-region of this gene. The chimeric protein is thought to associate with the nuclear corepressor/histone deacetylase complex to block hematopoietic differentiation. Several transcript variants encoding multiple isoforms have been found for this gene. [provided by RefSeq]

**Other Designations:** acute myelogenous leukemia 1 translocation 1 protein,acute myelogenous leukemia 1 translocation 1, cyclin-D related,core-binding factor, runt domain, alpha subunit 2; translocated to, 1; cyclin D-related,eight twenty one protein,myeloid translocation gene

## Gene Information

**Entrez GeneID:** [3065](#)

**Gene Name:** HDAC1

**Gene Alias:** DKFZp686H12203,GON-10,HD1,RPD3,RPD3L1

**Gene Description:** histone deacetylase 1

**Omim ID:** [601241](#)

**Gene Ontology:** [Hyperlink](#)

**Gene Summary:** Histone acetylation and deacetylation, catalyzed by multisubunit complexes, play a key role in the regulation of eukaryotic gene expression. The protein encoded by this gene belongs to the histone deacetylase/acuc/apha family and is a component of the histone deacetylase complex. It also interacts with retinoblastoma tumor-suppressor protein and this complex is a key element in the control of cell proliferation and differentiation. Together with metastasis-associated protein-2, it deacetylates p53 and modulates its effect on cell growth and apoptosis. [provided by RefSeq]

**Other Designations:** OTTHUMP00000008745,reduced potassium dependency, yeast homolog-like 1

[服務條款](#) | [隱私權政策](#) | [著作及商標](#) | [網站地圖](#)

©2016 亞諾法生技股份有限公司 Abnova Corporation. 版權所有.