



# SZABO SCANDIC

Part of Europa Biosite

## Produktinformation



Forschungsprodukte & Biochemikalien



Zellkultur & Verbrauchsmaterial



Diagnostik & molekulare Diagnostik



Laborgeräte & Service

Weitere Information auf den folgenden Seiten!  
See the following pages for more information!



### Lieferung & Zahlungsart

siehe unsere [Liefer- und Versandbedingungen](#)

### Zuschläge

- Mindermengenzuschlag
- Trockeneiszuschlag
- Gefahrgutzuschlag
- Expressversand

### SZABO-SCANDIC HandelsgmbH

Quellenstraße 110, A-1100 Wien

T. +43(0)1 489 3961-0

F. +43(0)1 489 3961-7

[mail@szabo-scandic.com](mailto:mail@szabo-scandic.com)

[www.szabo-scandic.com](http://www.szabo-scandic.com)

[linkedin.com/company/szaboscandic](https://www.linkedin.com/company/szaboscandic) 

## RUNX1T1 & ZBTB16 Protein Protein Interaction Antibody Pair

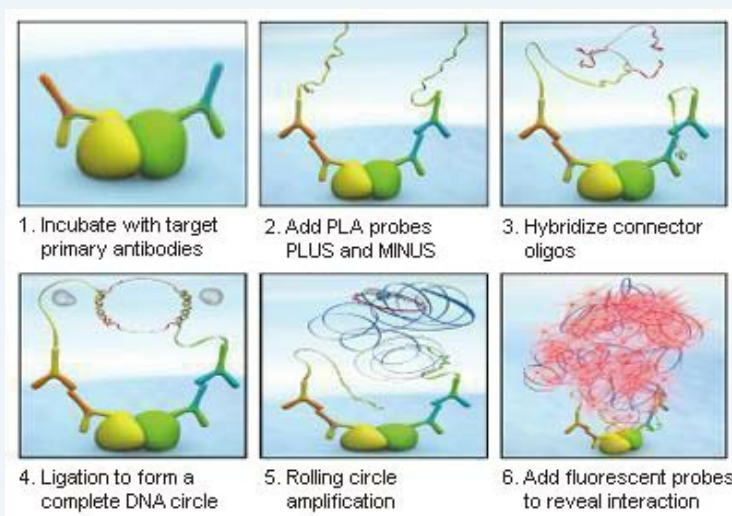
Catalog # : DI0503

規格 : [ 1 Set ]

List All

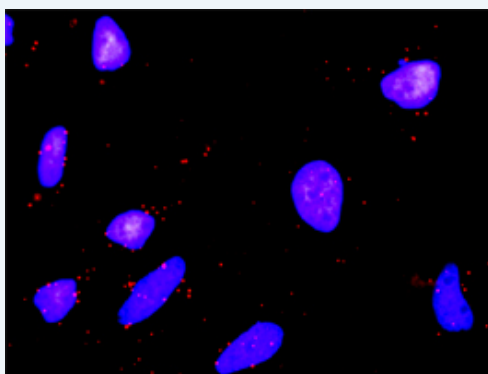
### Specification

**Product Description:** This protein protein interaction antibody pair set comes with two antibodies to detect the protein-protein interaction, one against the RUNX1T1 protein, and the other against the ZBTB16 protein for use in *in situ* Proximity Ligation Assay. See Publication Reference below.



**Reactivity:** Human

**Quality Control Testing:** Protein protein interaction immunofluorescence result.



Representative image of Proximity Ligation Assay of protein-protein interactions between RUNX1T1 and ZBTB16. HeLa cells were stained with anti-RUNX1T1 rabbit purified polyclonal antibody 1:1200 and anti-ZBTB16 mouse monoclonal antibody 1:50. Each red dot represents the detection of protein-protein interaction complex. The images were analyzed using an optimized freeware ([BlobFinder](#)) download from The Centre for Image Analysis at Uppsala University.

**Supplied Product:** Antibody pair set content:  
 1. RUNX1T1 rabbit purified polyclonal antibody (20 ug)  
 2. ZBTB16 mouse monoclonal antibody (40 ug)  
 \*Reagents are sufficient for at least 30-50 assays using recommended protocols.

**Storage Instruction:** Store reagents of the antibody pair set at -20°C or lower. Please aliquot to avoid repeated freeze thaw cycle. Reagents should be returned to -

### Application Image

*In situ* Proximity Ligation Assay (Cell)

20°C storage immediately after use.

MSDS:

 [Download](#)

---

### Publication Reference

---

1. [An analysis of protein-protein interactions in cross-talk pathways reveals CRKL as a novel prognostic marker in hepatocellular carcinoma.](#)  
Liu CH, Chen TC, Chau GY, Jan YH, Chen CH, Hsu CN, Lin KT, Juang YL, Lu PJ, Cheng HC, Chen MH, Chang CF, Ting YS, Kao CY, Hsiao M, Huang CY. Mol Cell Proteomics. 2013 Feb 8. [Epub ahead of print]

---

### Applications

---

#### *In situ* Proximity Ligation Assay (Cell)

---

[RUNX1T1](#) [ZBTB16](#)

---

### Gene Information

---

Entrez GeneID: [862](#)

Gene Name: RUNX1T1

Gene Alias: AML1T1,CBFA2T1,CDR,ETO,MGC2796,MTG8,MTG8b,ZMYND2

Gene Description: runt-related transcription factor 1; translocated to, 1 (cyclin D-related)

Omim ID: [133435](#)

Gene Ontology: [Hyperlink](#)

**Gene Summary:** The protein encoded by this gene is a putative zinc finger transcription factor and oncoprotein. In acute myeloid leukemia, especially in the M2 subtype, the t(8;21)(q22;q22) translocation is one of the most frequent karyotypic abnormalities. The translocation produces a chimeric gene made up of the 5'-region of the RUNX1 gene fused to the 3'-region of this gene. The chimeric protein is thought to associate with the nuclear corepressor/histone deacetylase complex to block hematopoietic differentiation. Several transcript variants encoding multiple isoforms have been found for this gene. [provided by RefSeq]

**Other Designations:** acute myelogenous leukemia 1 translocation 1 protein,acute myelogenous leukemia 1 translocation 1, cyclin-D related,core-binding factor, runt domain, alpha subunit 2; translocated to, 1; cyclin D-related,eight twenty one protein,myeloid translocation gene

---

### Gene Information

---

Entrez GeneID: [7704](#)

Gene Name: ZBTB16

Gene Alias: PLZF,ZNF145

Gene Description: zinc finger and BTB domain containing 16

Omim ID: [176797](#)

Gene Ontology: [Hyperlink](#)

**Gene Summary:** This gene is a member of the Krueppel C2H2-type zinc-finger protein family and encodes a zinc finger transcription factor that contains nine Kruppel-type zinc finger domains at the carboxyl terminus. This protein

is located in the nucleus, is involved in cell cycle progression, and interacts with a histone deacetylase. Specific instances of aberrant gene rearrangement at this locus have been associated with acute promyelocytic leukemia (APL). Alternate transcriptional splice variants have been characterized. [provided by RefSeq]

---

**Other** Kruppel-like zinc finger protein,promyelocytic leukemia zinc finger  
**Designations:** protein,zinc finger protein 145 (Kruppel-like, expressed in promyelocytic leukemia)

---

---

[服務條款](#) | [隱私權政策](#) | [著作及商標](#) | [網站地圖](#)

©2016 亞諾法生技股份有限公司 Abnova Corporation. 版權所有.