



# SZABO SCANDIC

Part of Europa Biosite

## Produktinformation



Forschungsprodukte & Biochemikalien



Zellkultur & Verbrauchsmaterial



Diagnostik & molekulare Diagnostik



Laborgeräte & Service

Weitere Information auf den folgenden Seiten!  
See the following pages for more information!



### Lieferung & Zahlungsart

siehe unsere [Liefer- und Versandbedingungen](#)

### Zuschläge

- Mindermengenzuschlag
- Trockeneiszuschlag
- Gefahrgutzuschlag
- Expressversand

### SZABO-SCANDIC HandelsgmbH

Quellenstraße 110, A-1100 Wien

T. +43(0)1 489 3961-0

F. +43(0)1 489 3961-7

[mail@szabo-scandic.com](mailto:mail@szabo-scandic.com)

[www.szabo-scandic.com](http://www.szabo-scandic.com)

[linkedin.com/company/szaboscandic](https://www.linkedin.com/company/szaboscandic) 

## CREB3 & CREB3L4 Protein Protein Interaction Antibody Pair

Catalog # : DI0522

規格 : [ 1 Set ]

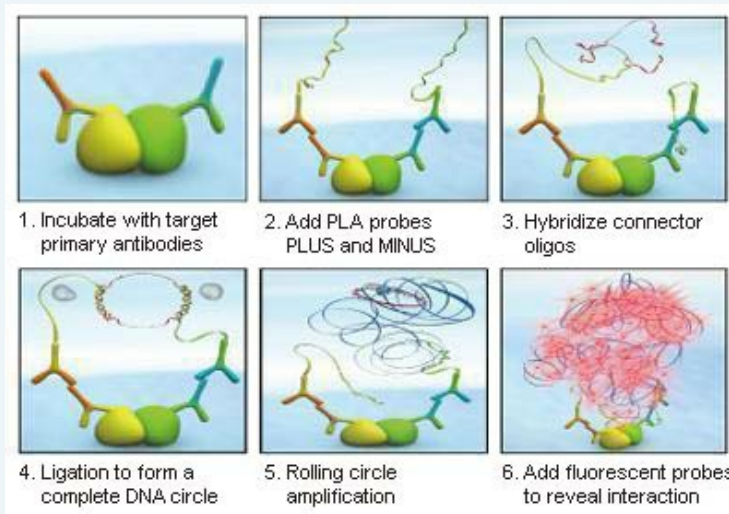
List All

### Specification

**Product Description:** This protein protein interaction antibody pair set comes with two antibodies to detect the protein-protein interaction, one against the CREB3 protein, and the other against the CREB3L4 protein for use in *in situ* Proximity Ligation Assay. See Publication Reference below.

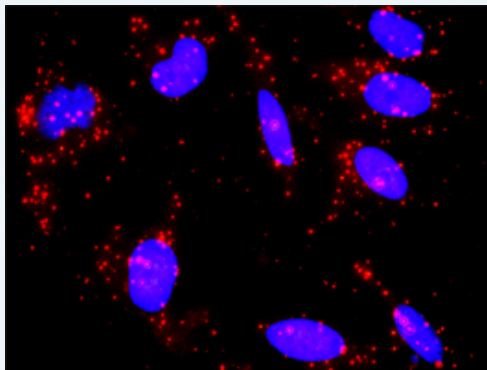
### Application Image

*In situ* Proximity Ligation Assay (Cell)



**Reactivity:** Human

**Quality Control Testing:** Protein protein interaction immunofluorescence result.




Representative image of Proximity Ligation Assay of protein-protein interactions between CREB3 and CREB3L4. HeLa cells were stained with anti-CREB3 rabbit purified polyclonal antibody 1:1200 and anti-CREB3L4 mouse monoclonal antibody 1:50. Each red dot represents the detection of protein-protein interaction complex. The images were analyzed using an optimized freeware ([BlobFinder](#)) download from The Centre for Image Analysis at Uppsala University.

**Supplied Product:** Antibody pair set content:  
 1. CREB3 rabbit purified polyclonal antibody (20 ug)  
 2. CREB3L4 mouse monoclonal antibody (40 ug)  
 \*Reagents are sufficient for at least 30-50 assays using recommended protocols.

**Storage Instruction:** Store reagents of the antibody pair set at -20°C or lower. Please aliquot to avoid repeated freeze thaw cycle. Reagents should be returned to -

20°C storage immediately after use.

MSDS:

 [Download](#)

## Publication Reference

1. [An analysis of protein-protein interactions in cross-talk pathways reveals CRKL as a novel prognostic marker in hepatocellular carcinoma.](#)  
Liu CH, Chen TC, Chau GY, Jan YH, Chen CH, Hsu CN, Lin KT, Juang YL, Lu PJ, Cheng HC, Chen MH, Chang CF, Ting YS, Kao CY, Hsiao M, Huang CY. Mol Cell Proteomics. 2013 Feb 8. [Epub ahead of print]

## Applications

### *In situ* Proximity Ligation Assay (Cell)

[CREB3](#) [CREB3L4](#)

## Gene Information

Entrez GeneID: [10488](#)

Gene Name: CREB3

Gene Alias: LUMAN,LZIP,MGC15333,MGC19782

Gene Description: cAMP responsive element binding protein 3

Omim ID: [606443](#)

Gene Ontology: [Hyperlink](#)

**Gene Summary:** This gene encodes a transcription factor that is a member of the leucine zipper family of DNA binding proteins. This protein binds to the cAMP-responsive element, an octameric palindrome. The protein interacts with host cell factor C1, which also associates with the herpes simplex virus (HSV) protein VP16 that induces transcription of HSV immediate-early genes. This protein and VP16 both bind to the same site on host cell factor C1. It is thought that the interaction between this protein and host cell factor C1 plays a role in the establishment of latency during HSV infection. An additional transcript variant has been identified, but its biological validity has not been determined. [provided by RefSeq]

**Other Designations:** OTTHUMP00000021348,basic leucine zipper protein,cyclic AMP response element (CRE)-binding protein/activating transcription factor 1,transcription factor LZIP-alpha

## Gene Information

Entrez GeneID: [148327](#)

Gene Name: CREB3L4

Gene Alias: AIBZIP,ATCE1,CREB3,CREB4,JAL,hJAL

Gene Description: cAMP responsive element binding protein 3-like 4

Omim ID: [607138](#)

Gene Ontology: [Hyperlink](#)

**Gene Summary:** cAMP response element-binding (CREB) proteins are a family of mammalian transcription activators. For further background information on CREB proteins, see CREB1 (MIM 123810).[supplied by OMIM]

**Other Designations:** OTTHUMP00000035264, OTTHUMP00000035265, OTTHUMP00000035266, androgen-induced basic leucine zipper, cAMP responsive element binding protein 1

---

[服務條款](#) | [隱私權政策](#) | [著作及商標](#) | [網站地圖](#)

©2016 亞諾法生技股份有限公司 Abnova Corporation. 版權所有.