



# SZABO SCANDIC

Part of Europa Biosite

## Produktinformation



Forschungsprodukte & Biochemikalien



Zellkultur & Verbrauchsmaterial



Diagnostik & molekulare Diagnostik



Laborgeräte & Service

Weitere Information auf den folgenden Seiten!  
See the following pages for more information!



### Lieferung & Zahlungsart

siehe unsere [Liefer- und Versandbedingungen](#)

### Zuschläge

- Mindermengenzuschlag
- Trockeneiszuschlag
- Gefahrgutzuschlag
- Expressversand

### SZABO-SCANDIC HandelsgmbH

Quellenstraße 110, A-1100 Wien

T. +43(0)1 489 3961-0

F. +43(0)1 489 3961-7

[mail@szabo-scandic.com](mailto:mail@szabo-scandic.com)

[www.szabo-scandic.com](http://www.szabo-scandic.com)

[linkedin.com/company/szaboscandic](https://www.linkedin.com/company/szaboscandic) 

## NR4A1 & RPS6KA5 Protein Protein Interaction Antibody Pair

Catalog # : DI0537

規格 : [ 1 Set ]

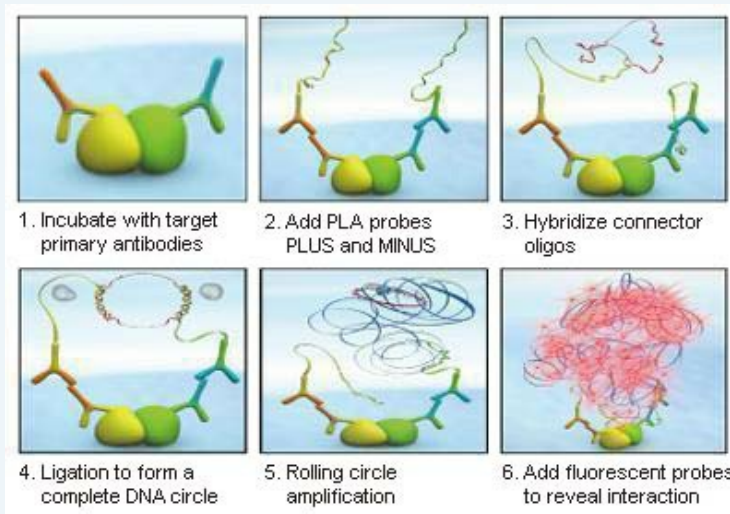
List All

### Specification

**Product Description:** This protein protein interaction antibody pair set comes with two antibodies to detect the protein-protein interaction, one against the NR4A1 protein, and the other against the RPS6KA5 protein for use in *in situ* Proximity Ligation Assay. See Publication Reference below.

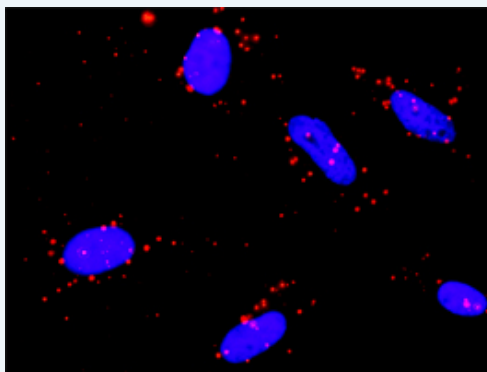
### Application Image

*In situ* Proximity Ligation Assay (Cell)



**Reactivity:** Human

**Quality Control Testing:** Protein protein interaction immunofluorescence result.



Representative image of Proximity Ligation Assay of protein-protein interactions between NR4A1 and RPS6KA5. HeLa cells were stained with anti-NR4A1 rabbit purified polyclonal antibody 1:1200 and anti-RPS6KA5 mouse monoclonal antibody 1:50. Each red dot represents the detection of protein-protein interaction complex. The images were analyzed using an optimized freeware ([BlobFinder](#)) download from The Centre for Image Analysis at Uppsala University.

**Supplied Product:** Antibody pair set content:  
 1. NR4A1 rabbit purified polyclonal antibody (20 ug)  
 2. RPS6KA5 mouse monoclonal antibody (40 ug)  
 \*Reagents are sufficient for at least 30-50 assays using recommended protocols.

**Storage Instruction:** Store reagents of the antibody pair set at -20°C or lower. Please aliquot to avoid repeated freeze thaw cycle. Reagents should be returned to -

20°C storage immediately after use.

MSDS:

 [Download](#)

### Publication Reference

1. [An analysis of protein-protein interactions in cross-talk pathways reveals CRKL as a novel prognostic marker in hepatocellular carcinoma.](#)  
Liu CH, Chen TC, Chau GY, Jan YH, Chen CH, Hsu CN, Lin KT, Juang YL, Lu PJ, Cheng HC, Chen MH, Chang CF, Ting YS, Kao CY, Hsiao M, Huang CY. Mol Cell Proteomics. 2013 Feb 8. [Epub ahead of print]

### Applications

#### *In situ* Proximity Ligation Assay (Cell)

[NR4A1](#) [RPS6KA5](#)

### Gene Information

Entrez GeneID: [3164](#)

Gene Name: NR4A1

Gene Alias: GFRP1,HMR,MGC9485,N10,NAK-1,NGFIB,NP10,NUR77,TR3

Gene Description: nuclear receptor subfamily 4, group A, member 1

Omim ID: [139139](#)

Gene Ontology: [Hyperlink](#)

**Gene Summary:** This gene encodes a member of the steroid-thyroid hormone-retinoid receptor superfamily. Expression is induced by phytohemagglutinin in human lymphocytes and by serum stimulation of arrested fibroblasts. The encoded protein acts as a nuclear transcription factor. Translocation of the protein from the nucleus to mitochondria induces apoptosis. Multiple alternatively spliced variants, encoding the same protein, have been identified. [provided by RefSeq]

**Other Designations:** TR3 orphan receptor,early response protein NAK1,growth factor-inducible nuclear protein N10,hormone receptor,orphan nuclear receptor HMR,steroid receptor TR3

### Gene Information

Entrez GeneID: [9252](#)

Gene Name: RPS6KA5

Gene Alias: MGC1911,MSK1,MSPK1,RLPK

Gene Description: ribosomal protein S6 kinase, 90kDa, polypeptide 5

Omim ID: [603607](#)

Gene Ontology: [Hyperlink](#)

**Other Designations:** mitogen- and stress-activated protein kinase 1,ribosomal protein S6 kinase, 90kD, polypeptide 5

