



# SZABO SCANDIC

Part of Europa Biosite

## Produktinformation



Forschungsprodukte & Biochemikalien



Zellkultur & Verbrauchsmaterial



Diagnostik & molekulare Diagnostik



Laborgeräte & Service

Weitere Information auf den folgenden Seiten!  
See the following pages for more information!



### Lieferung & Zahlungsart

siehe unsere [Liefer- und Versandbedingungen](#)

### Zuschläge

- Mindermengenzuschlag
- Trockeneiszuschlag
- Gefahrgutzuschlag
- Expressversand

### SZABO-SCANDIC HandelsgmbH

Quellenstraße 110, A-1100 Wien

T. +43(0)1 489 3961-0

F. +43(0)1 489 3961-7

[mail@szabo-scandic.com](mailto:mail@szabo-scandic.com)

[www.szabo-scandic.com](http://www.szabo-scandic.com)

[linkedin.com/company/szaboscandic](https://www.linkedin.com/company/szaboscandic) 

## RALGDS & HRAS Protein Protein Interaction Antibody Pair

Catalog # : DI0565

規格 : [ 1 Set ]

List All

### Specification

**Product Description:** This protein protein interaction antibody pair set comes with two antibodies to detect the protein-protein interaction, one against the RALGDS protein, and the other against the HRAS protein for use in *in situ* Proximity Ligation Assay. See Publication Reference below.

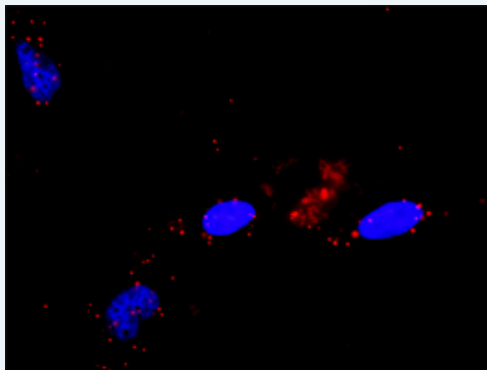
### Application Image

*In situ* Proximity Ligation Assay (Cell)



**Reactivity:** Human

**Quality Control Testing:** Protein protein interaction immunofluorescence result.



Representative image of Proximity Ligation Assay of protein-protein interactions between RALGDS and HRAS. HeLa cells were stained with anti-RALGDS rabbit purified polyclonal antibody 1:1200 and anti-HRAS mouse purified polyclonal antibody 1:50. Each red dot represents the detection of protein-protein interaction complex. The images were analyzed using an optimized freeware ([BlobFinder](#)) download from The Centre for Image Analysis at Uppsala University.

**Supplied Product:** Antibody pair set content:  
 1. RALGDS rabbit purified polyclonal antibody (20 ug)  
 2. HRAS mouse purified polyclonal antibody (40 ug)  
 \*Reagents are sufficient for at least 30-50 assays using recommended protocols.

**Storage Instruction:** Store reagents of the antibody pair set at -20°C or lower. Please aliquot to avoid repeated freeze thaw cycle. Reagents should be returned to -

20°C storage immediately after use.

MSDS:  [Download](#)

### Publication Reference

1. [An analysis of protein-protein interactions in cross-talk pathways reveals CRKL as a novel prognostic marker in hepatocellular carcinoma.](#)  
Liu CH, Chen TC, Chau GY, Jan YH, Chen CH, Hsu CN, Lin KT, Juang YL, Lu PJ, Cheng HC, Chen MH, Chang CF, Ting YS, Kao CY, Hsiao M, Huang CY. Mol Cell Proteomics. 2013 Feb 8. [Epub ahead of print]

### Applications

#### *In situ* Proximity Ligation Assay (Cell)

[HRAS](#) [RALGDS](#)

### Gene Information

Entrez GeneID: [5900](#)

Gene Name: RALGDS

Gene Alias: FLJ20922, RGF, RaLGEF

Gene Description: ral guanine nucleotide dissociation stimulator

Omim ID: [601619](#)

Gene Ontology: [Hyperlink](#)

Other Designations: OTTHUMP00000022458, OTTHUMP00000022460

### Gene Information

Entrez GeneID: [3265](#)

Gene Name: HRAS

Gene Alias: C-BAS/HAS, C-H-RAS, C-HA-RAS1, CTLO, H-RASIDX, HAMS, HRAS1, K-RAS, N-RAS, RASH1

Gene Description: v-Ha-ras Harvey rat sarcoma viral oncogene homolog

Omim ID: [109800](#), [188470](#), [190020](#), [218040](#)

Gene Ontology: [Hyperlink](#)

**Gene Summary:** This gene belongs to the Ras oncogene family, whose members are related to the transforming genes of mammalian sarcoma retroviruses. The products encoded by these genes function in signal transduction pathways. These proteins can bind GTP and GDP, and they have intrinsic GTPase activity. This protein undergoes a continuous cycle of de- and re-palmitoylation, which regulates its rapid exchange between the plasma membrane and the Golgi apparatus. Mutations in this gene cause Costello syndrome, a disease characterized by increased growth at the prenatal stage, growth deficiency at the postnatal stage, predisposition to tumor formation, mental retardation, skin and musculoskeletal abnormalities, distinctive facial appearance and cardiovascular abnormalities. Defects in this gene are implicated in a variety of cancers, including bladder cancer, follicular thyroid cancer, and oral squamous cell carcinoma. Multiple transcript variants, which

encode different isoforms, have been identified for this gene. [provided by RefSeq]

**Other Designations:** GTP- and GDP-binding peptide B,GTPase HRas,Ha-Ras1 proto-oncoprotein,OTTHUMP00000162769,OTTHUMP00000166053,OTTHUMP00000166055,Ras family small GTP binding protein H-Ras,c-has/bas p21 protein,c-ras-Ki-2 activated oncogene,p19 H-RasIDX protein,transformatio

---

[服務條款](#) | [隱私權政策](#) | [著作及商標](#) | [網站地圖](#)

©2016 亞諾法生技股份有限公司 Abnova Corporation. 版權所有.