



# SZABO SCANDIC

Part of Europa Biosite

## Produktinformation



Forschungsprodukte & Biochemikalien



Zellkultur & Verbrauchsmaterial



Diagnostik & molekulare Diagnostik



Laborgeräte & Service

Weitere Information auf den folgenden Seiten!  
See the following pages for more information!



### Lieferung & Zahlungsart

siehe unsere [Liefer- und Versandbedingungen](#)

### Zuschläge

- Mindermengenzuschlag
- Trockeneiszuschlag
- Gefahrgutzuschlag
- Expressversand

### SZABO-SCANDIC HandelsgmbH

Quellenstraße 110, A-1100 Wien

T. +43(0)1 489 3961-0

F. +43(0)1 489 3961-7

[mail@szabo-scandic.com](mailto:mail@szabo-scandic.com)

[www.szabo-scandic.com](http://www.szabo-scandic.com)

[linkedin.com/company/szaboscandic](https://www.linkedin.com/company/szaboscandic) 

## PLCG2 & ERBB2 Protein Protein Interaction Antibody Pair

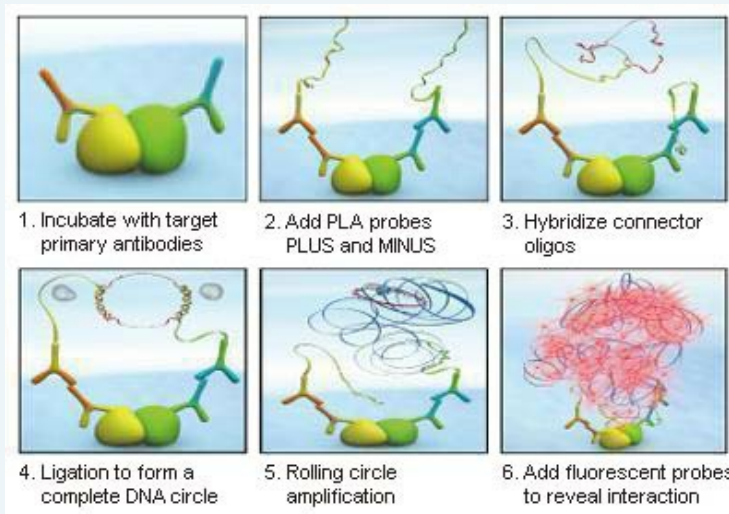
Catalog # : DI0575

規格 : [ 1 Set ]

List All

### Specification

**Product Description:** This protein protein interaction antibody pair set comes with two antibodies to detect the protein-protein interaction, one against the PLCG2 protein, and the other against the ERBB2 protein for use in *in situ* Proximity Ligation Assay. See Publication Reference below.

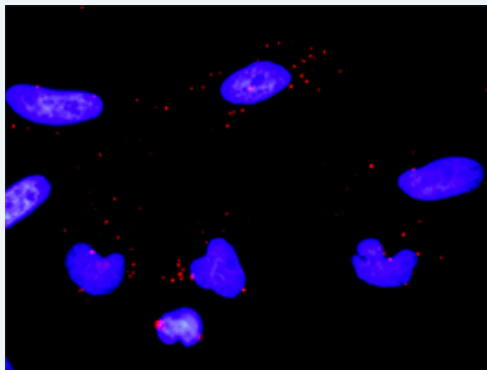


### Application Image

*In situ* Proximity Ligation Assay (Cell)

**Reactivity:** Human

**Quality Control Testing:** Protein protein interaction immunofluorescence result.



Representative image of Proximity Ligation Assay of protein-protein interactions between PLCG2 and ERBB2. HeLa cells were stained with anti-PLCG2 rabbit purified polyclonal antibody 1:1200 and anti-ERBB2 mouse monoclonal antibody 1:50. Each red dot represents the detection of protein-protein interaction complex. The images were analyzed using an optimized freeware ([BlobFinder](#)) download from The Centre for Image Analysis at Uppsala University.

**Supplied Product:** Antibody pair set content:  
 1. PLCG2 rabbit purified polyclonal antibody (20 ug)  
 2. ERBB2 mouse monoclonal antibody (40 ug)  
 \*Reagents are sufficient for at least 30-50 assays using recommended protocols.

**Storage Instruction:** Store reagents of the antibody pair set at -20°C or lower. Please aliquot to avoid repeated freeze thaw cycle. Reagents should be returned to -

20°C storage immediately after use.

MSDS:  [Download](#)

### Publication Reference

1. [An analysis of protein-protein interactions in cross-talk pathways reveals CRKL as a novel prognostic marker in hepatocellular carcinoma.](#)  
Liu CH, Chen TC, Chau GY, Jan YH, Chen CH, Hsu CN, Lin KT, Juang YL, Lu PJ, Cheng HC, Chen MH, Chang CF, Ting YS, Kao CY, Hsiao M, Huang CY. Mol Cell Proteomics. 2013 Feb 8. [Epub ahead of print]

### Applications

#### *In situ* Proximity Ligation Assay (Cell)

[ERBB2](#) [PLCG2](#)

### Gene Information

Entrez GeneID: [5336](#)

Gene Name: PLCG2

Gene Alias: -

Gene Description: phospholipase C, gamma 2 (phosphatidylinositol-specific)

Omim ID: [600220](#)

Gene Ontology: [Hyperlink](#)

**Gene Summary:** Enzymes of the phospholipase C family catalyze the hydrolysis of phospholipids to yield diacylglycerols and water-soluble phosphorylated derivatives of the lipid head groups. A number of these enzymes have specificity for phosphoinositides. Of the phosphoinositide-specific phospholipase C enzymes, C-beta is regulated by heterotrimeric G protein-coupled receptors, while the closely related C-gamma-1 (PLCG1; MIM 172420) and C-gamma-2 enzymes are controlled by receptor tyrosine kinases. The C-gamma-1 and C-gamma-2 enzymes are composed of phospholipase domains that flank regions of homology to noncatalytic domains of the SRC oncogene product, SH2 and SH3. [supplied by OMIM]

Other Designations: phospholipase C gamma 2, phospholipase C, gamma 2, phospholipase C, gamma 2 (phosphatidylinositol-specific)

### Gene Information

Entrez GeneID: [2064](#)

Gene Name: ERBB2

Gene Alias: CD340, HER-2, HER-2/neu, HER2, NEU, NGL, TKR1

Gene Description: v-erb-b2 erythroblastic leukemia viral oncogene homolog 2, neuro/glioblastoma derived oncogene homolog (avian)

Omim ID: [137215](#), [137800](#), [164870](#), [211980](#)

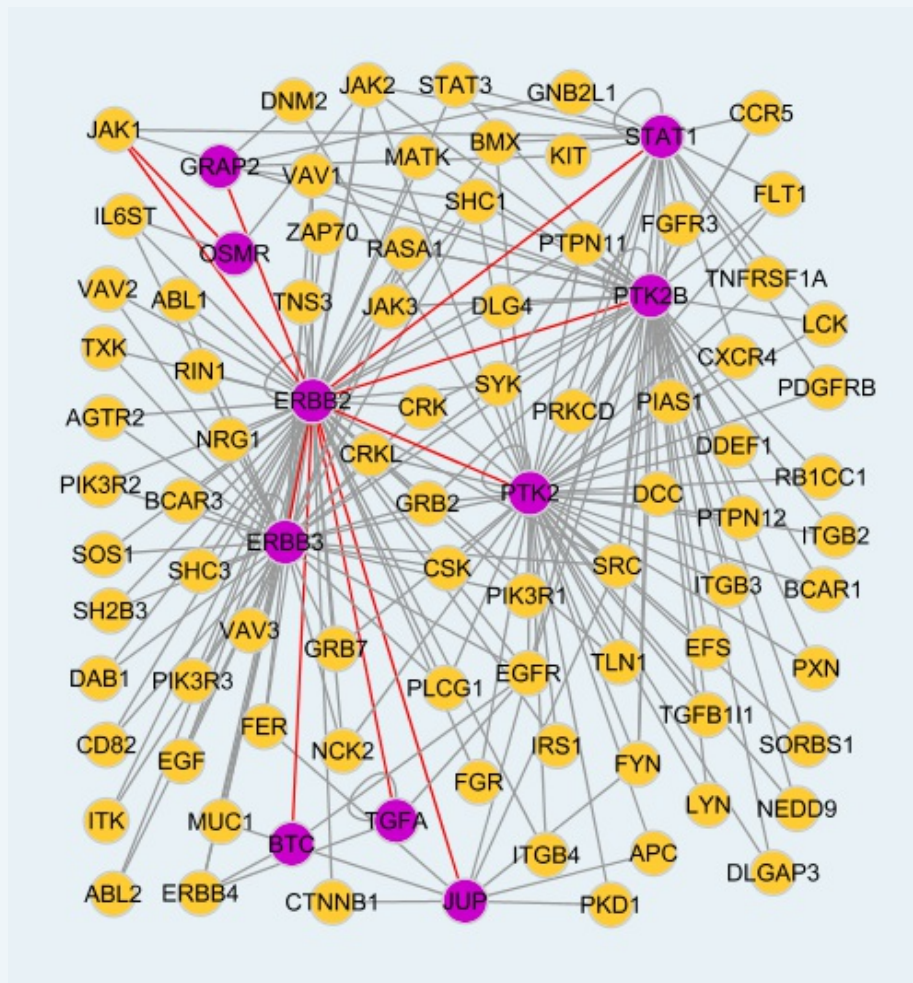
Gene Ontology: [Hyperlink](#)

**Gene Summary:** This gene encodes a member of the epidermal growth factor (EGF) receptor family of receptor tyrosine kinases. This protein has no ligand binding domain of its own and therefore cannot bind growth factors.

However, it does bind tightly to other ligand-bound EGF receptor family members to form a heterodimer, stabilizing ligand binding and enhancing kinase-mediated activation of downstream signalling pathways, such as those involving mitogen-activated protein kinase and phosphatidylinositol-3 kinase. Allelic variations at amino acid positions 654 and 655 of isoform a (positions 624 and 625 of isoform b) have been reported, with the most common allele, Ile654/Ile655, shown here. Amplification and/or overexpression of this gene has been reported in numerous cancers, including breast and ovarian tumors. Alternative splicing results in several additional transcript variants, some encoding different isoforms and others that have not been fully characterized. [provided by RefSeq]

**Other Designations:** c-erb B2/neu protein, erbB-2, herstatin, neuroblastoma/glioblastoma derived oncogene homolog, v-erb-b2 avian erythroblastic leukemia viral oncogene homolog 2 (neuro/glioblastoma derived oncogene homolog)

**Interactome**



[服務條款](#) | [隱私權政策](#) | [著作及商標](#) | [網站地圖](#)

©2016 亞諾法生技股份有限公司 Abnova Corporation. 版權所有.