



SZABO SCANDIC

Part of Europa Biosite

Produktinformation



Forschungsprodukte & Biochemikalien



Zellkultur & Verbrauchsmaterial



Diagnostik & molekulare Diagnostik



Laborgeräte & Service

Weitere Information auf den folgenden Seiten!
See the following pages for more information!



Lieferung & Zahlungsart

siehe unsere [Liefer- und Versandbedingungen](#)

Zuschläge

- Mindermengenzuschlag
- Trockeneiszuschlag
- Gefahrgutzuschlag
- Expressversand

SZABO-SCANDIC HandelsgmbH

Quellenstraße 110, A-1100 Wien

T. +43(0)1 489 3961-0

F. +43(0)1 489 3961-7

mail@szabo-scandic.com

www.szabo-scandic.com

[linkedin.com/company/szaboscandic](https://www.linkedin.com/company/szaboscandic) 

BIRC3 & IKBKB Protein Protein Interaction Antibody Pair

Catalog # : DI0578

規格 : [1 Set]

List All

Specification

Product Description: This protein protein interaction antibody pair set comes with two antibodies to detect the protein-protein interaction, one against the BIRC3 protein, and the other against the IKBKB protein for use in *in situ* Proximity Ligation Assay. See Publication Reference below.

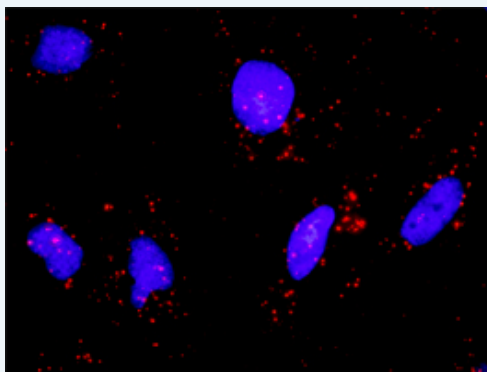
Application Image

In situ Proximity Ligation Assay (Cell)



Reactivity: Human

Quality Control Testing: Protein protein interaction immunofluorescence result.



Representative image of Proximity Ligation Assay of protein-protein interactions between BIRC3 and IKBKB. HeLa cells were stained with anti-BIRC3 rabbit purified polyclonal antibody 1:1200 and anti-ICKBKB mouse monoclonal antibody 1:50. Each red dot represents the detection of protein-protein interaction complex. The images were analyzed using an optimized freeware ([BlobFinder](#)) download from The Centre for Image Analysis at Uppsala University.

Supplied Product: Antibody pair set content:
 1. BIRC3 rabbit purified polyclonal antibody (20 ug)
 2. IKBKB mouse monoclonal antibody (40 ug)
 *Reagents are sufficient for at least 30-50 assays using recommended protocols.

Storage Instruction: Store reagents of the antibody pair set at -20°C or lower. Please aliquot to avoid repeated freeze thaw cycle. Reagents should be returned to -

20°C storage immediately after use.

MSDS:  [Download](#)

Publication Reference

1. [An analysis of protein-protein interactions in cross-talk pathways reveals CRKL as a novel prognostic marker in hepatocellular carcinoma.](#)
Liu CH, Chen TC, Chau GY, Jan YH, Chen CH, Hsu CN, Lin KT, Juang YL, Lu PJ, Cheng HC, Chen MH, Chang CF, Ting YS, Kao CY, Hsiao M, Huang CY. Mol Cell Proteomics. 2013 Feb 8. [Epub ahead of print]

Applications

In situ Proximity Ligation Assay (Cell)

[BIRC3](#) [IKBKB](#)

Gene Information

Entrez GeneID: [330](#)

Gene Name: BIRC3

Gene Alias: AIP1,API2,CIAP2,HAIP1,HIAP1,MALT2,MIHC,RNF49

Gene Description: baculoviral IAP repeat-containing 3

Omim ID: [601721](#)

Gene Ontology: [Hyperlink](#)

Gene Summary: The protein encoded by this gene is a member of a family of proteins that inhibits apoptosis by binding to tumor necrosis factor receptor-associated factors TRAF1 and TRAF2, probably by interfering with activation of ICE-like proteases. The encoded protein inhibits apoptosis induced by serum deprivation but does not affect apoptosis resulting from exposure to menadione, a potent inducer of free radicals. The amino acid sequence predicts three baculovirus IAP repeat domains and a ring finger domain. Transcript variants encoding the same isoform have been identified. [provided by RefSeq]

Other Designations: TNFR2-TRAF signaling complex protein,apoptosis inhibitor 2,baculoviral IAP repeat-containing protein 3,inhibitor of apoptosis protein 1,mammalian IAP homolog C

Gene Information

Entrez GeneID: [3551](#)

Gene Name: IKBKB

Gene Alias: FLJ40509,IKK-beta,IKK2,IKKB,MGC131801,NFKBIKB

Gene Description: inhibitor of kappa light polypeptide gene enhancer in B-cells, kinase beta

Omim ID: [603258](#)

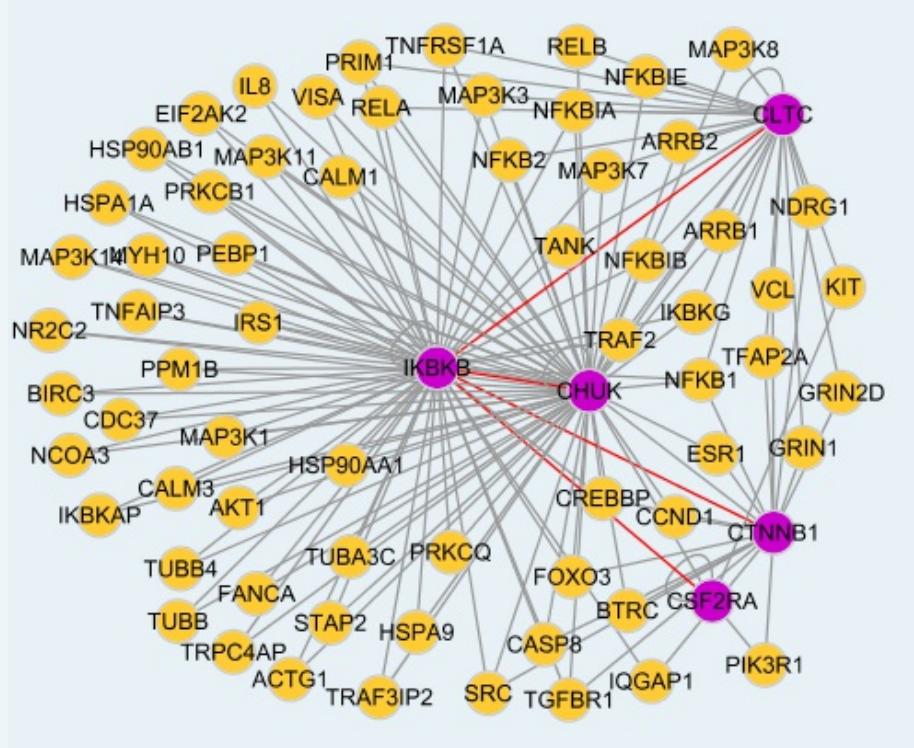
Gene Ontology: [Hyperlink](#)

Gene Summary: NFKB1 (MIM 164011) or NFKB2 (MIM 164012) is bound to REL (MIM 164910), RELA (MIM 164014), or RELB (MIM 604758) to form the NFKB complex. The NFKB complex is inhibited by I-kappa-B proteins (NFKBIA, MIM 164008, or NFKBIB, MIM 604495), which inactivate NF-kappa-B by

trapping it in the cytoplasm. Phosphorylation of serine residues on the I-kappa-B proteins by kinases (IKBKA, MIM 600664, or IKBKB) marks them for destruction via the ubiquitination pathway, thereby allowing activation of the NF-kappa-B complex. Activated NFKB complex translocates into the nucleus and binds DNA at kappa-B-binding motifs such as 5-prime GGGRNYYCC 3-prime or 5-prime HGGARNYYCC 3-prime (where H is A, C, or T; R is an A or G purine; and Y is a C or T pyrimidine).[supplied by OMIM

Other inhibitor of nuclear factor kappa B kinase beta subunit,nuclear factor
Designations: NF-kappa-B inhibitor kinase beta

Interactome



[服務條款](#) | [隱私權政策](#) | [著作及商標](#) | [網站地圖](#)

©2016 亞諾法生技股份有限公司 Abnova Corporation. 版權所有.