



# SZABO SCANDIC

Part of Europa Biosite

## Produktinformation



Forschungsprodukte & Biochemikalien



Zellkultur & Verbrauchsmaterial



Diagnostik & molekulare Diagnostik



Laborgeräte & Service

Weitere Information auf den folgenden Seiten!  
See the following pages for more information!



### Lieferung & Zahlungsart

siehe unsere [Liefer- und Versandbedingungen](#)

### Zuschläge

- Mindermengenzuschlag
- Trockeneiszuschlag
- Gefahrgutzuschlag
- Expressversand

### SZABO-SCANDIC Handels GmbH

Quellenstraße 110, A-1100 Wien

T. +43(0)1 489 3961-0

F. +43(0)1 489 3961-7

[mail@szabo-scandic.com](mailto:mail@szabo-scandic.com)

[www.szabo-scandic.com](http://www.szabo-scandic.com)

[linkedin.com/company/szaboscandic](https://www.linkedin.com/company/szaboscandic)



## STK36 & GLI3 Protein Protein Interaction Antibody Pair

Catalog # : DI0590

規格 : [ 1 Set ]

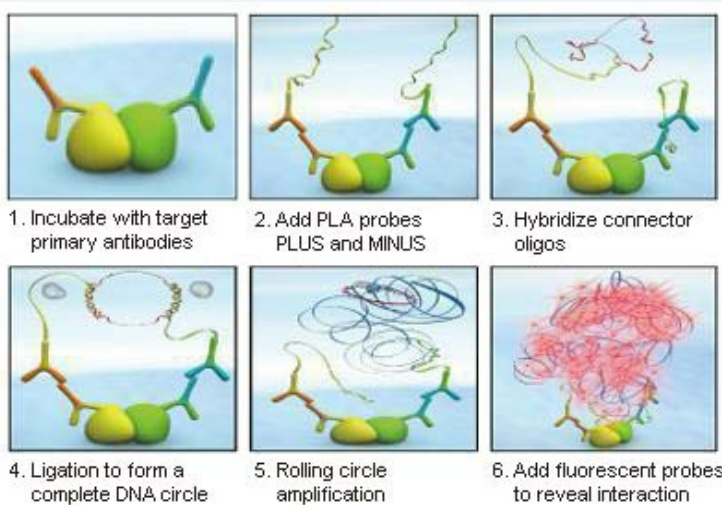
List All

### Specification

**Product Description:** This protein protein interaction antibody pair set comes with two antibodies to detect the protein-protein interaction, one against the STK36 protein, and the other against the GLI3 protein for use in *in situ* Proximity Ligation Assay. See Publication Reference below.

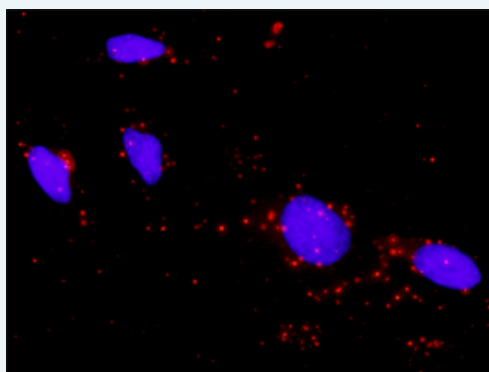
### Application Image

*In situ* Proximity Ligation Assay (Cell)



**Reactivity:** Human

**Quality Control Testing:** Protein protein interaction immunofluorescence result.



Representative image of Proximity Ligation Assay of protein-protein interactions between STK36 and GLI3. HeLa cells were stained with anti-STK36 rabbit purified polyclonal antibody 1:1200 and anti-GLI3 mouse monoclonal antibody 1:50. Each red dot represents the detection of protein-protein interaction complex. The images were analyzed using an optimized freeware ([BlobFinder](#)) download from The Centre for Image Analysis at Uppsala University.

**Supplied Product:** Antibody pair set content:  
 1. STK36 rabbit purified polyclonal antibody (20 ug)  
 2. GLI3 mouse monoclonal antibody (40 ug)  
 \*Reagents are sufficient for at least 30-50 assays using recommended protocols.

**Storage Instruction:** Store reagents of the antibody pair set at -20°C or lower. Please aliquot to avoid repeated freeze thaw cycle. Reagents should be returned to -

**MSDS:**[Download](#)**Publication Reference**

1. An analysis of protein-protein interactions in cross-talk pathways reveals CRKL as a novel prognostic marker in hepatocellular carcinoma. Liu CH, Chen TC, Chau GY, Jan YH, Chen CH, Hsu CN, Lin KT, Juang YL, Lu PJ, Cheng HC, Chen MH, Chang CF, Ting YS, Kao CY, Hsiao M, Huang CY. Mol Cell Proteomics. 2013 Feb 8. [Epub ahead of print]

**Applications*****In situ* Proximity Ligation Assay (Cell)**[GLI3](#) [STK36](#)**Gene Information****Entrez GeneID:** [27148](#)**Gene Name:** STK36**Gene Alias:** DKFZp434N0223,FU,KIAA1278**Gene Description:** serine/threonine kinase 36, fused homolog (Drosophila)**Omim ID:** [607652](#)**Gene Ontology:** [Hyperlink](#)**Other Designations:** fused,serine/threonine kinase 36**Gene Information****Entrez GeneID:** [2737](#)**Gene Name:** GLI3**Gene Alias:** ACLS,GCPS,PAP-A,PAPA,PAPA1,PAPB,PHS,PPDIV**Gene Description:** GLI-Kruppel family member GLI3**Omim ID:** [146510](#), [165240](#), [174200](#), [174700](#), [175700](#), [200990](#)**Gene Ontology:** [Hyperlink](#)

**Gene Summary:** This gene encodes a protein which belongs to the C2H2-type zinc finger proteins subclass of the Gli family. They are characterized as DNA-binding transcription factors and are mediators of Sonic hedgehog (Shh) signaling. The protein encoded by this gene localizes in the cytoplasm and activates patched Drosophila homolog (PTCH) gene expression. It is also thought to play a role during embryogenesis. Mutations in this gene have been associated with several diseases, including Greig cephalopolysyndactyly syndrome, Pallister-Hall syndrome, preaxial polydactyly type IV, and postaxial polydactyly types A1 and B. [provided by RefSeq]

**Other Designations:** DNA-binding protein,OTTHUMP00000025248,OTTHUMP00000159085,oncogene GLI3,zinc finger protein GLI3

---

---

[服務條款](#) | [隱私權政策](#) | [著作及商標](#) | [網站地圖](#)

©2016 亞諾法生技股份有限公司 Abnova Corporation. 版權所有.