



SZABO SCANDIC

Part of Europa Biosite

Produktinformation



Forschungsprodukte & Biochemikalien



Zellkultur & Verbrauchsmaterial



Diagnostik & molekulare Diagnostik



Laborgeräte & Service

Weitere Information auf den folgenden Seiten!
See the following pages for more information!



Lieferung & Zahlungsart

siehe unsere [Liefer- und Versandbedingungen](#)

Zuschläge

- Mindermengenzuschlag
- Trockeneiszuschlag
- Gefahrgutzuschlag
- Expressversand

SZABO-SCANDIC HandelsgmbH

Quellenstraße 110, A-1100 Wien

T. +43(0)1 489 3961-0

F. +43(0)1 489 3961-7

mail@szabo-scandic.com

www.szabo-scandic.com

[linkedin.com/company/szaboscandic](https://www.linkedin.com/company/szaboscandic) 

CDC42 & ARHGEF6 Protein Protein Interaction Antibody Pair

Catalog # : DI0596

規格 : [1 Set]

List All

Specification

Product Description: This protein protein interaction antibody pair set comes with two antibodies to detect the protein-protein interaction, one against the CDC42 protein, and the other against the ARHGEF6 protein for use in *in situ* Proximity Ligation Assay. See Publication Reference below.

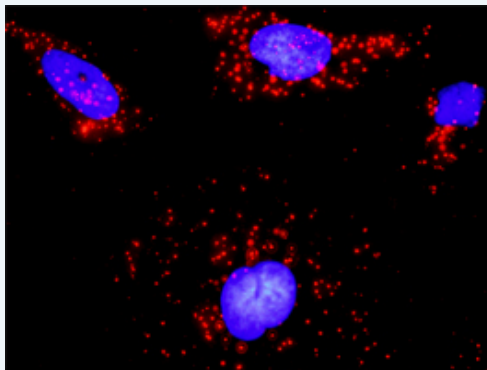
Application Image

In situ Proximity Ligation Assay (Cell)



Reactivity: Human

Quality Control Testing: Protein protein interaction immunofluorescence result.



Representative image of Proximity Ligation Assay of protein-protein interactions between CDC42 and ARHGEF6. HeLa cells were stained with anti-CDC42 rabbit purified polyclonal antibody 1:1200 and anti-ARHGEF6 mouse monoclonal antibody 1:50. Each red dot represents the detection of protein-protein interaction complex. The images were analyzed using an optimized freeware ([BlobFinder](#)) download from The Centre for Image Analysis at Uppsala University.

Supplied Product: Antibody pair set content:
 1. CDC42 rabbit purified polyclonal antibody (20 ug)
 2. ARHGEF6 mouse monoclonal antibody (40 ug)
 *Reagents are sufficient for at least 30-50 assays using recommended protocols.

Storage Instruction: Store reagents of the antibody pair set at -20°C or lower. Please aliquot to avoid repeated freeze thaw cycle. Reagents should be returned to -

20°C storage immediately after use.

MSDS:  [Download](#)

Publication Reference

1. [An analysis of protein-protein interactions in cross-talk pathways reveals CRKL as a novel prognostic marker in hepatocellular carcinoma.](#)
Liu CH, Chen TC, Chau GY, Jan YH, Chen CH, Hsu CN, Lin KT, Juang YL, Lu PJ, Cheng HC, Chen MH, Chang CF, Ting YS, Kao CY, Hsiao M, Huang CY. Mol Cell Proteomics. 2013 Feb 8. [Epub ahead of print]

Applications

In situ Proximity Ligation Assay (Cell)

[CDC42](#) [ARHGEF6](#)

Gene Information

Entrez GeneID: [998](#)

Gene Name: CDC42

Gene Alias: CDC42Hs,G25K

Gene Description: cell division cycle 42 (GTP binding protein, 25kDa)

Omim ID: [116952](#)

Gene Ontology: [Hyperlink](#)

Gene Summary: The protein encoded by this gene is a small GTPase of the Rho-subfamily, which regulates signaling pathways that control diverse cellular functions including cell morphology, migration, endocytosis and cell cycle progression. This protein is highly similar to *Saccharomyces cerevisiae* Cdc 42, and is able to complement the yeast *cdc42-1* mutant. The product of oncogene *Dbl* was reported to specifically catalyze the dissociation of GDP from this protein. This protein could regulate actin polymerization through its direct binding to Neural Wiskott-Aldrich syndrome protein (N-WASP), which subsequently activates Arp2/3 complex. Alternative splicing of this gene results in multiple transcript variants. [provided by RefSeq]

Other Designations: GTP-binding protein, 25kD,OTTHUMP00000002834,OTTHUMP00000002926,cell division cycle 42,cell division cycle 42 (GTP binding protein, 25kD),cell division cycle 42 (GTP-binding protein, 25kD),dJ224A6.1.1 (cell division cycle 42 (GTP-binding protein, 25kD)),d

Gene Information

Entrez GeneID: [9459](#)

Gene Name: ARHGEF6

Gene Alias: COOL2,Cool-2,KIAA0006,MRX46,PIX,alpha-PIX,alphaPIX

Gene Description: Rac/Cdc42 guanine nucleotide exchange factor (GEF) 6

Omim ID: [300267](#), [300436](#)

Gene Ontology: [Hyperlink](#)

Gene Summary: Rho GTPases play a fundamental role in numerous cellular processes that are initiated by extracellular stimuli that work through G protein coupled receptors. The encoded protein belongs to a family of cytoplasmic proteins that activate the Ras-like family of Rho proteins by exchanging bound GDP for GTP. It may form a complex with G proteins and stimulate Rho-dependent signals. This protein is activated by PI3-kinase. Mutations in this gene can cause X-chromosomal non-specific mental retardation. [provided by RefSeq]

Other Designations: OTTHUMP00000062283,PAK-interacting exchange factor, alpha,Rac/Cdc42 guanine exchange factor (GEF) 6,Rac/Cdc42 guanine nucleotide exchange factor 6,mental retardation, X-linked 46,rho guanine nucleotide exchange factor 6

[服務條款](#) | [隱私權政策](#) | [著作及商標](#) | [網站地圖](#)

©2016 亞諾法生技股份有限公司 Abnova Corporation. 版權所有.